



JOIN HANDS

Healthier Lives  
for Women and Children

We believe in a world in which every human life is valued, and health and quality healthcare are available to all. Our values call us to put the needs of the poor and vulnerable first.





## Welcome!

We at Catholic Medical Mission Board (CMMB) are excited to offer an investment opportunity to **Join Hands** to save lives, and restore justice to marginalized women and children around the world. Your partnership and financial commitment are an investment in practical, proven solutions that will improve health outcomes for more than **1 million** people.

By creating a foundation of good health, your participation will break a cycle of underinvestment in women and children. We take a healthy start in life for granted because we live in a nation that invests in health. The women and children we serve are denied that investment. Yet we know that they are the foundation of a prosperous society.

We invite you to **Join Hands** — in prayer, giving, or volunteering — to save lives in some of the most remote regions of our world.

*Bruce Wilkinson*

Bruce Wilkinson  
President and CEO  
**CMMB**





## Who We Are

Motivated by our faith, **CMMB** has a legacy of solidarity with the poor, especially marginalized woman and children who deserve healthier lives.

For more than 100 years, we have worked with local and global partners delivering health solutions through proven, cost-effective models.

Our interventions are community-based, community-driven, and long-term. We're committed to the women and children we serve.

We collaborate with partners who share our commitment to core humanitarian values, bringing together governments, corporations, foundations, and civil society to achieve collective impact.

We are recognized for outstanding transparency, strong governance, and stewardship; **98% of donations** directly support programs.













## Why Do We Need to Join Hands?

In a world where health outcomes for many are improving, too many people, especially women and children living in extreme poverty, continue to experience health inequities that are simply unacceptable:

- **400 million** people don't have access to essential health services.
- **2.5 million** children under 5 die every year from pneumonia, diarrheal disease and malaria.
- **821 women** die from complications of childbirth and pregnancy every day. 99% of these deaths occur in poor, rural communities in developing countries.
- **748 million** people do not have access to clean drinking water.
- **2.5 billion** people lack access to improved sanitation.
- **5 billion** people worldwide lack access to essential medicines.
- **700 million** people live in extreme poverty—on less than \$1.25 a day.

Vulnerable women and children remain marginalized and disproportionately affected by the consequences of poverty and poor health. Unlikely to ever access the health services they need, they are trapped in a life where they may never reach their full potential.

They are the reason we are inviting you to **Join Hands**.



# How Do We **Join Hands?**

## **Children and Mothers Partnerships (CHAMPS)**

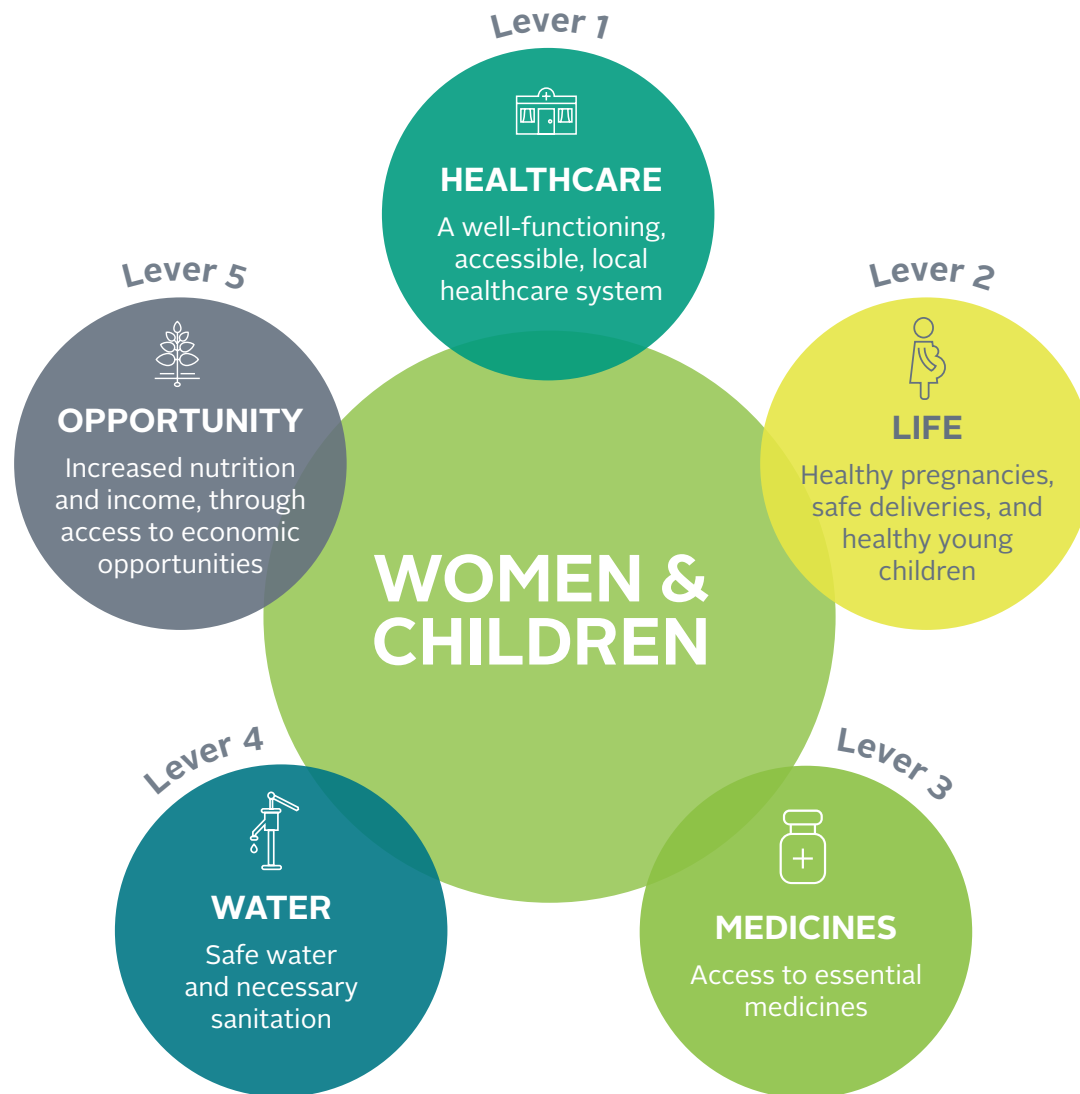
In 2015, we launched our innovative **CHAMPS** model in **5** countries, leveraging our networks of partners and bringing health solutions to women and children. **By providing health, dignity, and justice, CHAMPS delivers on the promise of a better future.**

### **CHAMPS Keeps Women and Children at the Center**


We know that women and children are key to a prosperous society. Because our interventions are long term—up to 20 years—we break the cycle of extreme poverty. By investing in their health and dignity, women and children have an opportunity for a better future.

**CHAMPS** coordinates and leverages the investments of all — community members, faith leaders, governments, corporations, community organizations, and other not-for-profit partners — to create deep and systemic change.

Building on decades of experience in development and public health, **CHAMPS** brings together the **synergies of 5 key levers** for healthy and prosperous communities:





A close-up photograph of a newborn baby's face and hands. The baby is lying down, wrapped in a white cloth with a small green star pattern. An adult's hand is gently holding the baby's hands. The background is blurred, showing a red cloth and a dark surface.

In **2015-2016**, we piloted **CHAMPS** core programs in Haiti, Kenya, Peru, South Sudan, and Zambia. By testing programs through implementation, our pilots demonstrate:

- A cost-effective, proven model
- Sustainable, community-driven results
- Impact of long-term investment
- Power of partnerships leveraged across sectors

CHAMPS in Action

## Impact in South Sudan

South Sudan is one of the most challenging and hard-to-reach areas of the world. It is ranked as one of the countries with the highest maternal and child mortality rates.

In South Sudan, we have built a powerful partnership coordinating with critical players to collectively act on the five levers of our **CHAMPS** model.

### The result?

In the communities where **CHAMPS** has intervened, we have almost eliminated maternal mortality.

- Maternal mortality has been reduced from 20.5 deaths per 1,000 deliveries to 2 for every 1,000.

We have completely eliminated transmission of HIV from HIV+ mothers receiving treatment to their children.

- 100% of women receiving prenatal services knew their HIV status.

By working with our partners in South Sudan, CHAMPS is saving lives and delivering on the promise of a better future.







Numbers are impressive, yet mothers like Mary compel us to do more.

Mary was a very young woman who was excited about the delivery of her first baby. After three excruciating days in labor without progress, she fell unconscious. Our community health worker quickly coordinated emergency transport.

Mary was suffering from severely obstructed labor and hypoglycemia due to exhaustion. A highly skilled CMMB doctor at a quality health facility prepared for an emergency C-section. With little time to spare, Mary was treated with IV fluids and her healthy six-pound daughter was safely delivered. Mother and baby survived.

**CHAMPS** in South Sudan is keeping women and children alive, even in emergency situations.

*Photo: Mary and her baby resting after a safe delivery.*



# Join Hands

We are now taking the lead, offering an opportunity to **Join Hands** with our growing network of partners.

Our goal is to scale up **CHAMPS** over the next 5 years, in 5 countries, bringing health, dignity, and justice to more than 1 million people living in extreme poverty, so they can lead healthier lives.

**Join Hands.** Offer your hands, your hearts, and your generosity, and invest in the lives of poor, marginalized women and children.

**Join Hands.** Come together with us — in prayer, giving, or volunteering. Experience the power of partnership and collective impact.





**5 Levers + 5 Countries + 5 Years = \$55M Investments**



**HAITI** \$7.5M  
135,792 people

**KENYA** \$11M  
181,755 people

**PERU** \$8M  
226,845 people

**SOUTH SUDAN** \$21.5M  
438,062 people

**ZAMBIA** \$7M  
27,000 people



**Lever 1  
HEALTHCARE**

Providing access  
for quality  
healthcare to  
1 million people

**\$22M**



**Lever 2  
LIFE**

Supporting  
60,000  
safe pregnancies  
and 250,000  
thriving children  
and women  
formerly at risk

**\$11M**



**Lever 3  
MEDICINES**

Ensuring access  
to essential  
medicines for  
1 million people

**\$3M**



**Lever 4  
WATER**

Providing clean  
water and  
sanitation to  
more than  
1 million people

**\$14M**



**Lever 5  
OPPORTUNITY**

Providing  
better nutrition  
and economic  
opportunity for  
162,500 extremely  
poor people

**\$5M**

**1 Million** People with Healthier Lives







Join Hands with CHAMPS

# Opportunities for High-Impact Investment

Lever 1



## HEALTHCARE

A well-functioning, accessible, local healthcare system

Lever 2



## LIFE

Healthy pregnancies, safe deliveries, and healthy young children

Lever 3



## MEDICINES

Access to essential medicines

Lever 4



## WATER

Safe water and necessary sanitation

Lever 5



## OPPORTUNITY

Increased nutrition and income, through access to economic opportunities





To improve access to quality healthcare for 1 million people, strengthening 65 local healthcare facilities over the next 5 years, by:

- Providing adequate infrastructure and medical equipment
- Strengthening the emergency transport referral system
- Building a capable workforce for health

---

**Investment required:**  
**\$22M**

## Lever 1 **HEALTHCARE**



Systems strengthening is a critical part of overall health in the community. When we visited a CMMB partner mission hospital, the equipment was poor, old, and non-functional. I want to engage my colleagues running other health systems to support these hospitals in need. CMMB means healthier lives — I have seen it in Peru, Zambia, and Haiti. What I really appreciate about CMMB is that they have created deep partnerships in the community, and they actively listen to the residents.

— *Richard J. Statuto, MBA*

President and CEO, Bon Secours Health System

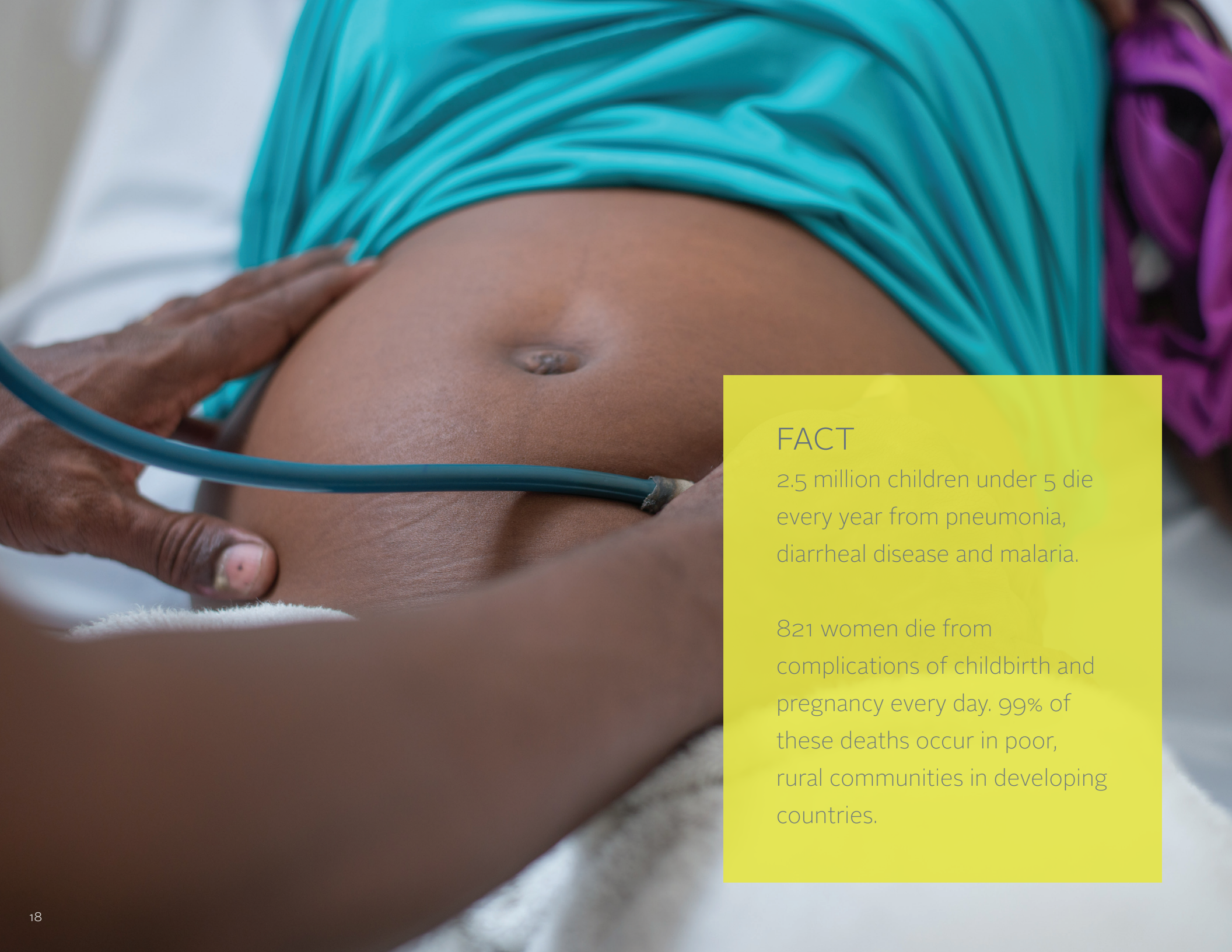




## FACT

400 million people worldwide  
do not have access to essential  
health services.





## FACT

2.5 million children under 5 die every year from pneumonia, diarrheal disease and malaria.

821 women die from complications of childbirth and pregnancy every day. 99% of these deaths occur in poor, rural communities in developing countries.

## Lever 2 **LIFE**



Health education is the cornerstone of the work CMMB does. We need to continue to push health education and get the resources as close as we can to the people.

— *John Starcher, Jr., JD*

President and CEO, Mercy Health



To support 60,000 healthy pregnancies and safe deliveries and to provide lifesaving health services to 250,000 children, mothers, and caregivers each year, by deploying a strong community-based health outreach system supported by a network of active community health workers to support safe motherhood and child health.

---

Investment required:  
**\$11M**





To ensure access to essential medicines for 1 million people, over 5 years, by:

- Strengthening pharmacy operations
- Bridging the gap for essential medicines

---

Investment required:  
**\$3M**

## Lever 3 **MEDICINES**



CMMB has been a trusted and valued J&J partner, delivering on the front lines of care for more than two decades. CMMB has played a critical role in ensuring that product and services are available to reach more women and children, no matter where they are.

— *Kimberlin M. Keller, PE*

Senior Manager, Global Community Impact,  
Johnson & Johnson





## FACT

5 billion people worldwide lack access to essential medicines. That's a key barrier to health in developing countries.





## FACT

748 million people do not have access to clean drinking water.

2.5 billion people lack access to improved sanitation.



## Lever 4 **WATER**



For more than 100 years, CMMB has operated at community level addressing the root causes that contribute to poverty and poor health outcomes. A notable strength is their active engagement with diverse partners to leverage their respective capacities towards common goals. P&G has partnered with CMMB in Africa to tackle some of the world's most significant challenges, including water, sanitation, and hygiene in emergency and rural development programs.

— *Allison Tummon-Kamphuis, MBA*  
Program Leader, Procter & Gamble  
Children's Safe Drinking Water Program



To improve water, sanitation, and hygiene for 1 million people over the next 5 years by supporting:

- Healthcare facilities
- Primary and secondary schools
- Communities
- Adolescent girls — with dignity kits

---

**Investment required:**  
**\$14M**





To economically impact  
65,000 of the most vulnerable  
people by:

- Building livelihoods through  
agriculture and livestock
- Establishing village savings  
and loan associations

---

Investment required:  
**\$5M**

## Lever 5 **OPPORTUNITY**



Business, governments, and civil society need to work as equal partners investing in participatory development to lift people out of poverty to create stable economies with hopeful and healthy communities. It can be done. We must abandon cynicism and embrace partnerships.

— *Michael Hastings, Lord Hastings of Scarisbrick, CBE*

Global Head of Corporate Citizenship, KPMG International





## FACT

700 million people live in extreme poverty—on less than \$1.25 a day.



## Join Hands with Our Network of Partners

To achieve the Sustainable Development Goals set by the United Nations, we need to encourage and promote effective public, public-private, and civil society partnerships, building on the experience of partnerships and their resourcing strategies.

During the last decade, we have been part of many successful global partnerships, including the:

- U.S. President's Emergency Plan for AIDS Relief (PEPFAR)
- President's Malaria Initiative (PMI)
- Global Development Alliance of the U.S. Agency for International Development (USAID)

In addition, our strong relationships with leading pharmaceutical companies allow us to distribute medicines worldwide. By partnering with health systems and universities, we are deploying volunteer medical professionals and expertise to support local healthcare facilities in need.

As we move to expand **CHAMPS**, it is these partnerships that will make a major difference, bringing healthier lives to women and children worldwide.

**Join Us. Join Hands.**





#### **Corporate Partners:**

Ernst & Young Foundation  
Goldman Sachs Philanthropy Fund  
Kirkland & Ellis  
KPMG  
Marks Paneth & Shron  
Procter & Gamble  
United Therapeutics Corporation  
Wells Fargo Advisors

#### **Foundation Partners:**

African Mission Healthcare Foundation  
Cornelius Family Foundation  
GHR Foundation  
J. Homer Butler Foundation  
Rauenhorst Family Foundations  
Loyola Foundation  
Mary Cross Tippmann Foundation  
Raskob Foundation for  
Catholic Activities  
Robert J. Frisby Foundation  
SC Ministry Foundation  
Sudan Relief Fund  
The Agnes Varis Charitable Trust  
The Mushett Family Foundation  
The Reed Foundation  
The Richard Davoud Donchian Foundation  
Wolohan Family Foundation

#### **Governmental &**

#### **Multilateral Partners:**

U.S. Centers for Disease Control  
and Prevention (CDC)  
Fund for the City of New York  
UN Refugee Agency  
UN World Food Program  
UNICEF

#### **Health Systems &**

#### **Health Sector Partners:**

Ascension Health  
Bon Secours Health System  
Carolina East Health System  
Catholic Health Association of USA  
Catholic Health Services of Long Island  
Covenant Health System  
Fidelis Care New York  
GNYHA Management Corp.  
Kentucky One Health  
Mercy Health  
Presence Health  
Providence Health & Services  
Trinitas Regional Medical Center  
Wyoming Valley Healthcare

#### **Pharmaceutical & Medical**

#### **Supply Partners:**

Abbott Labs  
Abbvie  
Accord Healthcare  
BD (Becton Dickinson)  
Bristol-Myers Squibb Company  
Carlsbad Technology  
Cross International  
Henry Schein  
Hospital Sisters Mission Outreach  
Johnson & Johnson  
Mead Johnson Nutrition  
Merck & Company  
Mission Outreach  
Mylan Pharmaceuticals  
Pfizer  
Restoring Vision  
Supplies OverSeas (SOS)  
Teligent  
Unipharm  
Vitamin Angels  
World Vision

#### **Faith Partners:**

Archdiocese of New York  
Archdiocese of Newark  
Congregation of Bon Secours  
Sisters of Paris  
Congregation of the Sisters of  
Saint Joseph  
Diocese of Brooklyn  
Diocese of Nashville  
Diocese of Rockville Centre  
Dominican Sisters  
Franciscan Mission Outreach  
Franciscan Sisters of Christian Charity  
Our Sunday Visitor  
Providence House  
Sisters of the Humility of Mary  
St. John Apostle & Evangelist Church



# Join Hands with Our Leadership Team



These men and women bring decades of professional experience, a spirit of partnership, and cross-sector collaboration to everything we do. Under their guidance and solid governance, we are privileged to serve the most vulnerable women, children, and communities.

## Board of Directors

### **Chairman - John E. Celentano, MBA**

Senior Advisor in the Life Sciences Industry

### **Vice Chair – Sister Rosemary Moynihan, PhD, SC**

General Superior, Sisters of Charity of Saint Elizabeth

### **Treasurer – Jeanmarie C. Grisi**

Chief Investment Officer, Nokia

### **Secretary – Maria R. Robinson, MD, MBA**

Dermatologist & Dermatopathologist

### **Nicholas D'Agostino, III**

President and CEO, D'Agostino Supermarkets

### **Tony Ezell, MBA**

Chief Marketing Officer, Elanco

### **Desmond Fitzgerald**

President, Hope for Poor Children Foundation

### **Edward J. Giniat**

Partner, KPMG

### **Michael P. Hilbert, SJ, JCD**

Associate Pastor, St. Ignatius Loyola Parish New York

### **Patrick William Kelley, MD, DrPH**

Distinguished Fellow in Nursing and Health Studies, EGAN School of Nursing and Health Studies, Fairfield University

### **Matt Malone, SJ, MA**

President and Editor in Chief, America Media

### **Conrad Person**

Retired Director, Johnson & Johnson - Africa

### **N. Regina Rabinovich, MD, MPH**

ExxonMobil Scholar in Residence, Harvard TH Chan School of Public Health, Harvard University

### **Robert E. Robotti, MBA**

President, Robotti & Company, LLC

### **John Starcher, Jr., JD**

President and CEO, Mercy Health

### **Richard J. Statuto, MBA**

President and CEO, Bon Secours Health Systems

### **Katherine A. Taylor, MSc, PhD**

Director of Global Health Training, Eck Institute for Global Health, University of Notre Dame

### **Bruce Wilkinson**

President and CEO, CMMB

### **Carol Zinn, SSJ, MTh, PhD**

Senior Vice President, Mission Integration, Plante Moran CRESA

## Executive Team

### **Bruce Wilkinson**

President and CEO

### **Dick Day**

Senior Vice President Programs and Volunteers

### **Ariel Frisancho, MD**

Country Director, Peru

### **Dianne Jean-François, MD, MPH**

Country Director, Haiti

### **Muthoni Kariuki, DrPH**

Country Director, Kenya

### **Adrian Kerrigan**

Senior Vice President for Partnerships

### **Michael O'Hara**

Chief Financial Officer

### **John Perry, MSc (Agric)**

Country Director, South Sudan

### **Lara Villar**

Senior Vice President, Strategy and Innovation

### **Batuke Walusiku-Mwewa**

Country Director, Zambia



**Join Hands** to bring health, dignity, and justice to vulnerable women and children today, and deliver on the promise of a better future.

**5 Levers + 5 Countries + 5 Years = \$55M Investments**



**HAITI** \$7.5M  
135,792 people

**KENYA** \$11M  
181,755 people

**PERU** \$8M  
226,845 people

**SOUTH SUDAN** \$21.5M  
438,062 people

**ZAMBIA** \$7M  
27,000 people



Lever 1  
**HEALTHCARE**

Providing access  
for quality  
healthcare to  
1 million people

**\$22M**



Lever 2  
**LIFE**

Supporting  
60,000  
safe pregnancies  
and 250,000  
thriving children  
and women  
formerly at risk

**\$11M**



Lever 3  
**MEDICINES**

Ensuring access  
to essential  
medicines for  
1 million people

**\$3M**



Lever 4  
**WATER**

Providing clean  
water and  
sanitation to  
more than  
1 million people

**\$14M**



Lever 5  
**OPPORTUNITY**

Providing  
better nutrition  
and economic  
opportunity for  
162,500 extremely  
poor people

**\$5M**

**1 Million** People with Healthier Lives



## **Join Hands** for the Dignity of All

We believe that everyone has a fundamental right to human decency. For more than 100 years, firm in our Catholic faith, we've been working to deliver the best possible health solutions to women and children in need. By providing health, dignity, and justice, our **CHAMPS** model delivers on the promise of a better future.









**CMMB**

100 WALL STREET, 9TH FLOOR

NEW YORK, NY 10005

800.678.5659

[WWW.CMMB.ORG](http://WWW.CMMB.ORG)



**cmmb**