



cmmmb

It Begins With You

2018 Annual Report





Dear Friends,

It is with heartfelt gratitude that we dedicate the 2018 Annual Report to you, our generous supporters. Your deep commitment to those in need inspires us every day. Together, the stones of love and compassion that we cast are forming ripples that flow far and wide, providing care, creating hope, and shining a light so that others might follow. Together in faith, we are advancing our shared vision and mission to provide quality healthcare to the most vulnerable women, children, and communities with love, dignity, and respect.

We are one human family, and this belief unites and brings us closer to God and to the people we serve. In the most challenging times we have drawn our strength from your generous support and prayers. At the most difficult moments, we knew we could count on you.

As you read through this Annual Report, know that it is because of your generosity and compassion that we made great strides in improving the health of communities impacted by poverty, reaching more than one and a half million people with access to quality healthcare.

You helped alleviate suffering. You helped heal wounds. Most importantly, you helped bring hope to those who felt hopeless. Thank you for your trust and companionship in this journey toward healthier lives worldwide.

In faith and friendship,

A handwritten signature in cursive script that reads "Bruce Wilkinson".

Bruce Wilkinson
President and CEO
CMMB

Our Vision

A world in which every human life is valued, and health and human dignity are shared by all.

Dear Friends,

St. Vincent de Paul counseled that “Charity is the cement that binds communities to God and persons to one another.” In the Gospel of Matthew, Jesus urged the Apostles not to send the hungry away but to “... give them some food yourselves.”

This is what Catholic Medical Mission Board (CMMB) donors and staff are all about: binding people, those with resources and those most in need, to each other and to our loving God. The mission of CMMB is to work in partnership globally to deliver locally sustainable, quality health solutions to women, children, and their communities. Partnerships with our donors, local country staff, pharmaceutical companies, other international service providers, volunteers and communities, and more are core to the effectiveness of this work.

These life-giving partnerships continue to grow and strengthen each of our CHAMPS and other service sites in the global community.

In the face of widespread chaos, confusion, and natural disasters, it is important to take time to recognize and celebrate the vital efforts that you help shape to make the world a better place. The Spirit of God is active among us. Together, we are fulfilling a vision to bring about a world in which every human life is valued, and health and human dignity are shared by all.

I encourage you to read CMMB’s 2018 Annual Report as a partner in this life-giving Mission of Jesus. Thank you for providing “food” and resources, for helping to cement communities in health and hope, and for responding to God’s grace in your lives by loving others.

Many blessings,

Sister Rosemary Moynihan
Sister Rosemary Moynihan, S.C., Ph.D.
Board Chair
CMMB

Our Mission

Inspired by the example of Jesus, CMMB works in partnership globally to deliver locally sustainable, quality health solutions to women, children, and their communities.

The Big Picture in 2018—Thanks To You

For over a century, we have worked globally to improve the health and well-being of people living on the margins of society and to alleviate their suffering. Inspired by the generosity of many, we work in partnership with local communities, governments, volunteers, and other relief organizations to implement sustainable solutions to improve the health of women and children, strengthen local health systems, and respond to global emergencies.



1,536,844

people received critical health and social services from CMMB



74,240

pregnant women received support for their pregnancies



889,155

people received HIV services



206,840

children under five received essential healthcare services, including check-ups, vaccinations, and growth monitoring



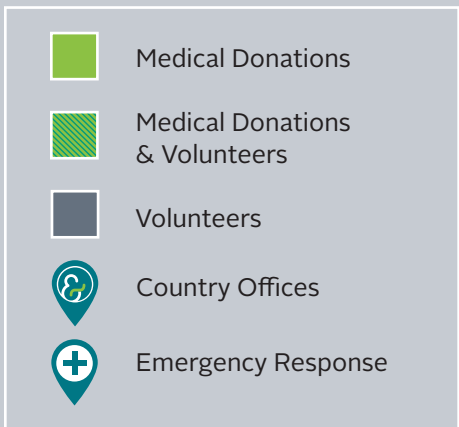
92,920

volunteer hours served, with 661 volunteers working in 17 countries



\$598M

worth of donated medicines and medical supplies distributed in 34 countries



Change Begins with Her

Women and Children Transform Communities

Women and children are among the world’s most vulnerable populations, disproportionately affected by illness, poverty, and economic disparities. When we empower women to overcome the effects of poverty and poor health, they can and will live full and productive lives—and so will their children, families, and communities—eventually transforming the world. We also know that when you invest in women, they invest in others. Women working together can lift a whole community out of poverty. Research shows that investing in the health of women and children saves millions of lives and yields significant returns, potentially up to nine times the value of the initial economic investment.

*“There is no tool
for development
more effective than
the empowerment
of women.”
—Kofi Annan*

It Begins with My Faith

Margaret has been supporting CMMB’s work since 1962, after securing her first job as a secretary in Manhattan. At a time that she earned \$75 a week, her first gift was \$5. And she’s been giving ever since.



“I grew up in an Irish-Catholic family, in a two-family home, with my parents, grandparents, aunts, and cousin. It was a simple life, but my parents sacrificed for me and my brother. Our Catholic faith was really the center of our lives.”

Thanks to the love and care she received as a girl, Margaret learned the value of a strong family. This is what motivates her to support CMMB’s efforts to improve the lives of mothers, children, and their families. Like all of us at CMMB, she knows that strengthening families starts by investing in mothers, because they invest in others. She jokingly refers to herself as a “cowardly missionary”—and loves that CMMB serves as the bridge to her adopted children and families around the world. “I love CMMB’s missionary spirit and admire so much the volunteers and staff, who work in often dangerous places to create better lives for those who often have little hope.”

*“With my contributions, I am sending my love to the women
and especially the children in those faraway lands.”*

Margaret believes strongly in empowering women with economic opportunity and the skills to manage money—skills she came to appreciate after her husband passed away. “I am most proud of the way I have been able to manage my life and resources. I have gone from feeling lost and unsure to telling myself that I could actually do what had to be done and praying every day that I make good choices.”

When we asked Margaret to share a message with our CMMB family about how to make a positive difference in the world, she replied, “I was a rather shy, very quiet child, who really worried that I wouldn’t get 100% on the test on any given day. It has taken me a long time to know that you really don’t have to get 100% every day. Just do your best, with good intentions.”



Transforming Lives Begins with CHAMPS

Delivering on the Promise of a Better Future

Through our innovative **Children and Mothers Partnerships (CHAMPS)** we make a long-term commitment to a community to provide health and opportunity to its vulnerable mothers and children. We believe women and children are key to a prosperous society and through **CHAMPS**, we are providing essential medicines, supplies, and medical equipment to health facilities. We are increasing access to safe water and sanitation. We are improving nutrition and livelihoods for the most vulnerable. By investing in their health and dignity, we are giving women and children an opportunity for a better future. Our interventions are working, and together we are saving many lives.

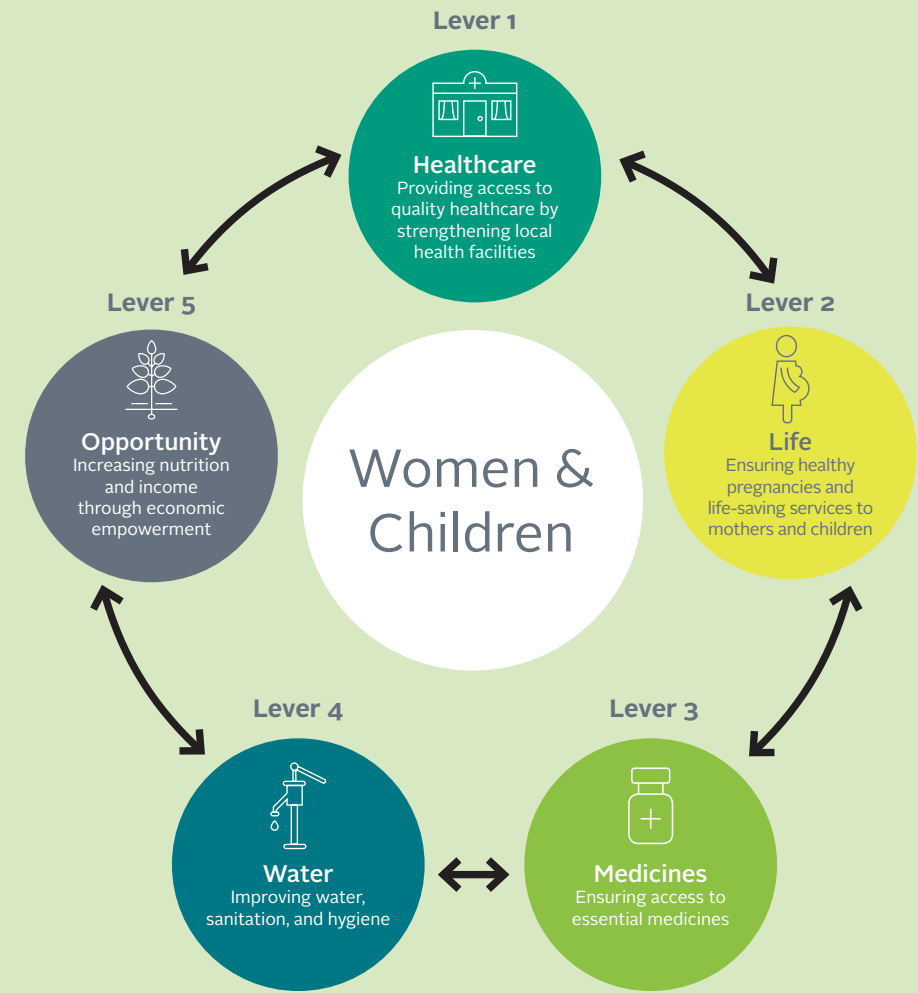
“Without a solution to the problems of the poor, we will not solve the problems of the world.”
—Pope Francis



Our CHAMPS Model

CHAMPS brings together five key levers to create healthy and prosperous communities. **CHAMPS levers 1, 2, and 3** ensure high quality health services to save lives and build healthy communities. **CHAMPS levers 4 and 5** address environmental issues and tackle the root causes of poor health and extreme poverty.

Through our **Join Hands for CHAMPS Campaign** we are seeking to improve the health of one million people by scaling up the **five levers of our CHAMPS program**.



As you read about our progress, please know it is possible only because of your generosity and compassion.



Strong Health Systems Change Lives

A well-functioning health system—with properly equipped facilities, well-trained health workers, and easy access by communities—is central to improving health outcomes. At each of our **CHAMPS** health facilities, we focus on training community health workers, improving clinical services, and ensuring that services are known to and reachable by those in need.

Expanded Access to Health Services in 2018

On Haiti's desperately poor southeastern coast, our trained and trusted community health workers are encouraging families to seek care at CMMB's **Bishop Joseph M. Sullivan Center for Health (BJSH)**, and it is working. Since it opened its doors on March 20, 2017, the number of patients accessing care has steadily increased, with over 8,951 treated and 167 safe deliveries in 2018.

Thanks to the high quality of care that patients receive at the hospital, word is spreading that the **BJSH** is a health facility families can trust. It is because of supporters like you that this hospital exists and that women and children in nearby communities are able to access care that is critical to their health and well-being.

Jacinthe's Miracle

Jacinthe was well past her due date when she arrived at the **BJSH** seeking care. The doctor on duty ran tests and confirmed that Jacinthe's baby was in danger. He rushed her into the operating room for an emergency C-section. When the baby was delivered, she was completely blue and not breathing.

"I knew something was wrong, but I wasn't fully conscious and I didn't realize what was happening." —Jacinthe

Dr. Dorothy Emiliem—our project officer and an anesthesiologist—was called to the hospital to support the surgical team.



She used physical stimulation, suction, and oxygen to get the baby breathing. Within minutes, the newborn was crying and alert. Because of your generosity, the **BJSH** is able to provide pregnant women with quality healthcare and a safe place to bring their babies into this world.



2018 Impact

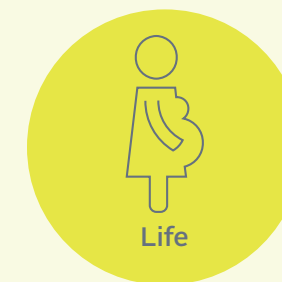
- 1,665 community health workers and volunteers trained
- \$500,000 invested in health facility improvements
- Dental clinic opened

"The doctors and the hospital are a blessing to me. They saved my child's life. If I had delivered her at home, like my other children, I would have lost this baby." —Jacinthe



2018 Impact

- **71,334** women received antenatal care
- **11,928** safe facility-based deliveries
- **206,840** children under five received health services



It Is All About a Healthy Start

Each day, 821 women die from complications during childbirth. Every year, 5.6 million children die before their fifth birthday. We believe everyone deserves a healthy start to life. Our **Life** initiatives provide pregnant women with access to prenatal and facility-based obstetric care, which greatly increase the odds of a safe delivery. Children under five receive essential health services to prevent common illnesses that can lead to death.

In South Sudan, maternal death rates are among the highest in the world. Encouraging mothers to deliver at a health facility vastly improves their health outcomes. St. Therese Hospital is the heart of our **CHAMPS** program and home to our **Safe Motherhood Program**, which mentors community health volunteers, who in turn teach pregnant women about the importance of seeking prenatal care and having a skilled birth attendant. In 2018, CMMB broke ground on a new operating room, maternity and surgical wards, and the region's first blood bank, significantly improving the hospital's ability to provide emergency services for high-risk pregnancies and to address cases of severe malnutrition in children.

A Chance at Life

Four months after their wedding, Sarah and Martin Rubino set out for a year to serve in South Sudan at St. Therese Hospital through our Volunteer Program. Sarah served as a nurse and midwife in the **Safe Motherhood Program**, and Martin was the lead engineer for the hospital's expansion project.



Sarah helped deliver many babies at the hospital, but one was particularly special. After a difficult delivery in which both mother and child nearly died, Sarah recounted:

"The next day, I visited Nevar and her daughter. Nevar, beaming, showed me her daughter in her new little outfit. With a smile, the grandmother then told me, in English, what they had named the newborn girl. I couldn't hold back my joy—they had named her Sarah. Without all of the support of CMMB's amazing donors, who help to provide medications and supplies, without those who supported me and my husband to come to Nzara, and without my teachers along the way, Nevar and her baby would not be alive today."



Ensuring Access to Essential Medicines

We are all familiar with the great debate about the cost of medicine. But for 5 billion people in the most under-resourced part of the world, accessing essential medicines is not possible at any price. At hospitals and clinics around the world, our **Medical Donation Program** helps fill gaps in medical inventories by providing free medicine and medical supplies. Supporting a consistent and stable supply chain of essential medicines at our **CHAMPS** health clinics is a key priority of this program, in collaboration with pharmaceutical partners. In times of emergencies, such as a natural disaster or war, fragile health systems are often pushed to a breaking point by increased demand for services. In unpredictable times like these, our **Medical Donation Program** is quick to collaborate with relief organizations on the ground, making our inventory of medicines and medical supplies available to first responders.

Responding to the World's Largest Humanitarian Crisis



The civil war in Yemen has created the world's largest man-made humanitarian crisis, with 80% of the population in need of humanitarian assistance and

10 million people on the brink of starvation. The crumbling health infrastructure has unleashed the worst cholera outbreak ever recorded, with 1.49 million suspected cases.

In 2018, CMMB sent \$14.5 million of basic medicine and medical supplies to meet these great needs. Working with Rahma Relief Foundation and MedGlobal, our field partners, CMMB is committed to continuing its relief efforts at hospitals in Edan and Mukalla.

Whether needed during an emergency or because of a common illness, medicine is fundamental to good health. We are grateful to our pharmaceutical partners and suppliers for their contributions of medicine and to our many individual donors, whose support enables us to deliver these lifesaving medicines across oceans, over dirt roads, and through jungles and deserts to treat those most in need. Thank you.



Photo: Gareth Bentley

2018 Impact

- **\$598 million** worth of medicines and supplies distributed
- **34** countries received medicines and supplies
- **225** shipments sent



2018 Impact

- **289,867** people received access to clean water
- **5,320** benefited from sanitation and hygiene improvements
- **19** communities in South Sudan received repairs to water wells and water management training



The Driving Force of Life

Water is essential to life, yet 663 million people, nearly 10% of the world's population, live without access to clean water. Women and children suffer the most, and more than 340,000 children under five die annually from diarrheal diseases directly related to unsafe drinking water, among other causes.

Our clean water initiatives seek to address both the immediate and the long-term need for clean water and sanitation through borehole and hand pump restoration, rainwater harvesting, water purification devices, and hygiene education.

Decades of war destroyed most boreholes in South Sudan. Adequate subsurface water is available, but people cannot access it. CMMB has been repairing community boreholes and hand pumps and training local community water committees to maintain this vital resource. In 2018, we restored wells in 19 communities, which provided clean water to over 9,500 people.

Clean Water for Communities

Kitui South is an impoverished, remote, and semi-arid area in Kenya and home of CMMB's **CHAMPS** program. Its severe shortage of clean water causes numerous health problems, including diarrhea among children, as families are forced to draw water from contaminated sources. As part of our clean water initiative, in partnership with Procter & Gamble, CMMB implemented a water purification project targeting **24** health facilities, **288** schools and **29,000** households. Distribution of water purification kits at these key areas of water consumption, along with training and hygiene education, increased access to clean water to **151,404** beneficiaries.



Photo: Clara Wetzel



It Begins with Opportunity

Women are the key to creating a prosperous society—that is why we keep them at the center of our work. When we invest in their health and well-being, they have the opportunities they need to succeed and thrive. And when mothers thrive, so do their children. Economically empowered women can feed their children, send them to school and seek quality healthcare when they are sick.

When we invest in women, we can change the world.

In addition to healthcare initiatives, our innovative **CHAMPS** program offers opportunities to women to enable them to lead more productive and fulfilling lives. Our **village saving and loans programs** in Peru, Haiti, Kenya, and Zambia support women with training and loans to plant gardens, raise livestock, and start small enterprises. In addition to generating income that allows women to support their families, the activities can help women achieve greater autonomy and improved self-esteem.

A Life-Changing Investment



Five years ago, Pamela joined the village savings and loan association in the remote and impoverished Zambian town of Mwandi, where she lives with her husband and four children.

“Look what I can do now! After saving with CMMB, I have a shop that brings money directly to me. I can feed my children and pay their school fees.”

That decision transformed her. Today, in an area where too many women are dispirited and without hope, Pamela and the women of her savings group are filled with optimism for the future. This past year, Pamela built a small shop a short walk from home, a place where everyone in her community can come for basic supplies. Everything she earns, she invests back into the health and education of her children.



Photo: Clara Wetzel

2018 Impact

- **9,127** people participated in village savings and loan programs
- **Over 550** families received livestock or home gardens for income generation

Volunteers: A Shared Purpose

“Love is shown more in deeds than in words.”

—St. Ignatius of Loyola

Our founder, Paluel Joseph Flagg, was a young doctor at St. Vincent’s Hospital in New York City in 1912, when he tragically lost his wife and child. He channeled his tremendous grief into a lifelong mission to heal the poor and serve others. He first traveled to Haiti as a medical volunteer, and CMMB was born. Our **Volunteer Program** is the foundation on which CMMB was built. Today, our volunteers are serving around the world and are the best reflection of Dr. Flagg’s vision.

Without your support, our **Volunteer Program** cannot exist. You share in our volunteers’ compassion, commitment, and courage. Your kindness, generosity, care, and love allow us to have the greatest possible impact. Thank you for supporting our volunteers and honoring the legacy of our founder, Dr. Flagg, and all of our extraordinary volunteers.

2018 Impact

- 661 volunteers
- Working in 17 countries
- Totalling over 90,000 hours served



Photo: Gareth Bentley

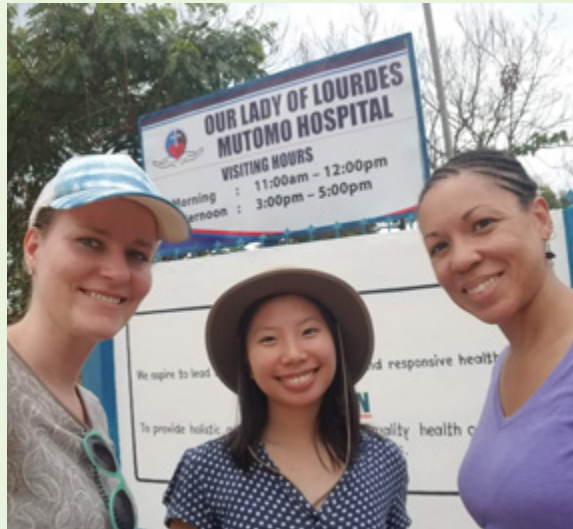


Photo: Ken Carlson

Dr. Tom Catena is our longest-serving medical volunteer. He has been part of our CMMB family since 1998. For the past decade, he has been the medical director and only permanent doctor at the Mother of Mercy Hospital in the war-torn Nuba region in Sudan, home to one million people.

Tom typically treats up to 500 patients in a day and is on call 24/7, delivering babies, performing surgeries, and treating traumatic injuries. He has saved the lives of more than 1,700 victims of war and countless others.

It is his faith that he leans on to get him through every day. **“I would not be here if it weren’t for my faith. Every single day I experience moments where I feel like giving up. But my faith keeps me pushing ahead. Without it, I’d be lost.”**

Tom has been recognized for his exceptional courage and commitment to bringing lifesaving care to the most marginalized. He was named one of Time Magazine’s 100 most influential people in 2015, and in 2017 he received the prestigious Aurora Prize for Awakening Humanity.

We are blessed to know him and we are inspired by his faith and dedication.

“I just completed a surgery on a young woman. The operation succeeded only because of contributions. All the equipment in the operating room, the ultrasound machine that we used in diagnosing, all the drugs, all the supplies, even the training of our anesthetist in a very good school in Kenya, were because of donors. Most of these donors were unknown to me. They are certainly unknown to the patient. But it is because of their generosity that she lived through this day. And that’s just one example from the past hour of how donors make our work possible.”

—Tom Catena, MD, CMMB Volunteer
Nuba Mountains, Sudan

Our Supporters

“For it is in giving that we receive”
—St. Francis of Assisi

Catholic Medical Mission Board is honored to acknowledge the exceptional support of our generous donors, whose steadfast support has sustained our lifesaving work.

Together in faith, we are advancing our shared mission and vision to provide quality healthcare to serve vulnerable women, children, and communities with love, dignity, and respect. We love what we do, but we can't do it without you. We are grateful for your compassion and sustained generosity. Mother Teresa said, “I see God in every human.” We see God in you.



CMMB gratefully acknowledges the following generous individuals, corporations, and foundations, who supported our mission during FY2018, October 1, 2017, to September 30, 2018.

\$500,000+

Anonymous
Mr. & Mrs. James M. Cornelius
The Greater Cincinnati Foundation
Mrs. Margaret Longto
Procter & Gamble

Fidelity Charitable Gift Fund
Mr. Desmond G. FitzGerald
Food for the Poor, Inc.
Hope for Poor Children Foundation
Johnson & Johnson
Loyola Foundation
Mercy Health

Sisters of the Sorrowful Mother Generalate
Mr. & Mrs. James G. Stofer*
The Agnes Varis Charitable Trust
Vanguard Charitable Endowment Program

\$50,000+

Anonymous
Mrs. Laura Audino
Bank of America Charitable Gift Fund
Ms. Camille Caliendo*
Chesapeake Charitable Foundation
Michael A. Deck, M.D.
Dr. & Mrs. John P. Hoying
Charles A. Kiddy
Mr. & Mrs. John J. Leahy

Rev. Richard F. Maichen*
Merck & Co., Inc.
Network for Good
Mr. & Mrs. William Pasulka
Presence Health
Sisters of Charity of the Incarnate Word
Rev. John B. Stawasz*
Mr. & Mrs. Matthew Styczynski
The Catholic Foundation
Trust of James Audino

\$25,000+

Mr. Lamberto Andreotti
Ms. A. Dorothy Arthur*
Catholic Health Services of Long Island
Charles Schwab Charitable
Cistercian Nuns
Mr. Edward J. Giniat
Goldman Sachs Philanthropy Fund
JP Morgan Chase Bank, N.A.
Quentin J. Kennedy Foundation
Mr. Kenneth J. Kotas*
Mr. & Mrs. Keith Koval
Mr. Donald R. Lachowicz

Mr. & Mrs. Aloysius A. Leopold
Ms. Janine Luke
Mary C. Karl & John F. Karl Charitable Trust
Mary Cross Tippmann Foundation
Mrs. Madeline Migura
Mr. Robert J. O'Shea
O'Shea Family Foundation
Ms. Mary F. Robek*
Mr. Nick J. Runnebohm
Ms. Kathleen H. Templin
The Reed Foundation
Mr. Edward B. Timko*
United Therapeutics Corporation
Mr. John Van Rens & Ms. Sarah Lutz
Mr. Alexander J. Yerman

\$10,000+

Adolph & Ruth Schnurmacher Foundation
The American Gift Fund
Mr. George Assie
Mr. Paul Bates
Benevity
Mr. Thomas Bliznick

Ms. Joan Boyle
J. Homer Butler Foundation
Helene M. Calvet, M.D., & Mr. John Necarsulmer
Mr. & Mrs. Nathaniel L. Carr
Mr. Armando J. Caruso*
Mr. & Mrs. John E. Celentano
Church of the Good Shepherd
Mr. Eugene B. Ciechanowski*
Mr. & Mrs. Kenneth Clancy
Mr. Michael D. Connelly
Cornelius Family Foundation, Inc.
Joseph J. Cutri, M.D.*
Mr. & Mrs. Nicholas D'Agostino, Jr.
Damien-Dutton Society
William C. Dowling, Jr., Foundation
Mr. & Mrs. John R. Evans
Mr. & Mrs. John T. Evans
Mr. Ivan Fischer
Mr. Paul F. Fischer
Ms. Mary L. Flynn
Mr. Richard Fratesi*
Ms. Elizabeth H. Fuller*
GE Foundation

Matching Gift Program
Mr. & Mrs. Robert Gardner
Mrs. Jane A. George
Mr. & Mrs. George E. Gibert*
Giffuni Foundation
Mr. & Mrs. Bernard J. Grimes
Mr. David H. Grubb
Mrs. Jane Guzikowski
Dr. & Mrs. Alfred Hartmann
Paypal Giving Fund
Lt. Col. & Mrs. Joseph F. Hines
Dr. & Mrs. Linus Ho
Ms. Norma J. Idzinga*
Mr. & Mrs. Chris King
KPMG
Mr. Richard Kreitzberg
Mr. & Mrs. Hilaire D. Lanaux J.C.L.
Mr. Justin Largen
Mr. Philip B. Laufer*
Love Meyer Family Foundation
LPL Financial
Mr. & Mrs. Patrick McCarthy

Mr. & Mrs. William A. McEachern
The McGonigle Family Trust
Mr. Kevin McGonigle
Mr. & Mrs. Kieran J. McGrath
Mr. Patrick D. McNelis
Mr. & Mrs. Dale Meier
Mr. & Mrs. John Meyer
Ms. Adelaide C. Murphy*
Mr. Robert Navin
Noster Foundation
Mr. Robert Ochylski
Ms. Margaret O'Connor
Mr. Richard N. Paulsen
Mr. Hank Raucci & Mrs. Sandra Raucci
Mr. Henry P. Riordan, Esq.*
Mr. & Mrs. Michael J. Runnebohm
Runnebohm Construction Co., Inc.
Mr. & Mrs. David T. Rybak
Mr. Matthew Schutzman
Deacon & Mrs. John V. Sebastian

Mr. William Sheehan
Mrs. Mary T. Sheppard
Mr. Robert L. Sheppard*
St. Clare's Monastery
Mr. Richard J. Statuto
Mrs. Virginia Stea
Ms. Frances Strachwitz
Rev. James M. Sullivan
Mr. & Mrs. Thomas Tebbens
The Catherine M. Walsh Foundation
The McDonald Family Foundation
The Mushett Family Foundation
The New York Community Trust
TIAA
Ms. Patricia L. Veit
Mr. & Mrs. David Wagner
Mr. & Mrs. Arthur Weingartner
Mr. & Mrs. Thomas Williams
Van Woeltz, M.D.
YourCause, LLC

“My first experience of motherhood is indescribable. The feeling of LOVE within me and the Lord is something that I would like other mothers, especially those living in remote areas, to experience, too.”



Our Supporters (continued)

“I’ve been asking God to lead me to His desire. I have been praying to show me what my mission is in life. I know in my heart, God wants me to help children, since I don’t have a child of my own.”

\$5,000+
Anonymous
Mr. & Mrs. Tom Abate
Ms. Theresa Adams
American Endowment Foundation
The Atlantic Philanthropies
Mr. Paul Andrys
Mr. Shiraz Balolia
Mr. John J. Bart
Mr. & Mrs. Luke Bartkiewicz
Mr. Joseph Bass
Mr. Fritz Baumgatner
Mr. Don Beaudry
Mr. Dean A. Beickelman
Mr. & Mrs. Terry Bellgowan
Mrs. Rose Belt
Mr. Richard Bene
Mr. Raymond J. Berardi
Mr. & Mrs. Jacques Bergeron
Ms. Victoria Beynon
Mr. Robert Bieluczyk*
Mr. & Mrs. James Bogaski
Mr. Kevin Bourque
Mr. John Brennan
& Mrs. Fran Brennan-Sullivan
Dr. & Mrs. Leo R. Brown
Mr. & Mrs. Dale E. Bryant
Ms. Patricia Burns
CA Inc. Matching Gift Program
Mr. & Mrs. Brian Callahan
Candlelight Storage LLC
Mr. David L. Castaldi
Mrs. Iris Castillo
Mr. & Mrs. David Cheever
Mr. Christopher Christenson
Ms. Ella Cochrane*
Miss Patricia J. Connell
Mr. Ernest E. Coqueran
Mr. & Mrs. Clarence Darrow
David A. Noyes & Company

Mr. Robert A. Davidson
Mr. Donald T. Delamore
Mr. & Mrs. Gregory M. DeSaye
Mr. Timothy Dockman
Mr. Jack Doyle
Ms. Holly Dravitzki
Mr. Scott Dunglinson
Mr. & Mrs. Gregory P. Dunn
Mr. Daniel R. Edgerton
Estate of Frederick Olson
Mr. Stephane H. Finkenbeiner
Ms. Clare Francis
Mr. Robert L. Freedman
James Gabriel
& Ellen R. Rosenthal
Dr. & Mrs. James Gaudin
Mrs. Michele A. Gentine
Mr. Richard J. Gibbs, Sr.
Nancy E. Gibbs M.D.
Mr. Geoffrey Gilson
Ms. Lenore R. Gleason
Gleason Family Foundation
Grey Nuns of the Sacred Heart
Dr. Damian W. Grivetti
Mr. Hubert Hamilton
Ms. Mary Beth Hampson
Ms. Marilou E. Hernandez
Mr. & Mrs. Stephen Hiltibidal
Mr. Jerome P. Hofmann
Ms. Maureen Hollis
Beth & Patricia Honan Fischer
Ms. Elizabeth A. Horne
Mr. & Mrs. John J. Hurley
Mr. Thomas A. Hychalk
Rev. Donald R. Imming
Mrs. & Mr. Rita James
Ms. Pauline Joyce
Mrs. Margaret A. Jurgens
Sr. Martha Juskewycz O.C.S.O.
Mrs. Mary C. Karl*

Rev. Anthony Kazarnowicz
Ms. Debra Kellogg
Rev. Charles F. Kelly
Mr. Brian Kelly
KLM Foundation
Mr. Frederick W. Koehler, Jr.
Mr. T. J. Kolar
Miss Anna E. Kovaly*
Mrs. Eileen Kruzynski
Mr. Raymond P. Kurkijy
Joseph C. Langlois, M.D.
Ms. Hye Y. Lee
& Mr. Istvan Robel
Mr. & Mrs. Drew Lelli
Los Alamos National Laboratory
Mrs. Carol H. Luders
Mrs. Elise D. Lynch
Ms. Linda C. March
Mr. Michael Mastriano
Mr. & Mrs. George A. Martin
The Estate of Mary Eckstein*
Ms. Kathleen McCarthy
Mr. & Mrs. Arthur J. McClelland
Mrs. Mary A. McCoy*
Mr. & Mrs. Joseph McSweeny
Mr. & Mrs. Kenneth J. Mello
Mrs. Patricia M. Mierzejewski
Milton & Fannie Brown
Family Foundation
Mrs. Luciya A. Miner
Ms. Loretta Mitro
Mr. Anthony G. Moleski
Mr. & Mrs. Edward P. Molnar
Mr. & Mrs. Joseph J. Moran
Ms. Kathleen Murnion
Ms. Patricia C. Murphy
Ms. Anne M. Murphy
Mr. Frank J. Neubauer
Mr. Kenneth Nolan
Mr. Jeffrey Nutting
Dr. Udoh Obioha
Ms. Hilary Olson
Mrs. Carol Olson
Mr. Terence O’Rourke Jr.
Ms. Rosemarie Osborn
Ms. Charlotte M. O’Toole
Mr. Thomas J. Palumbo
Paul Global Benefits

Mr. & Mrs. Allen E. Perrel
Ms. Imelda P. Pluess
Mr. John Queralt
Mr. Leo M. Reid
Mr. & Mrs. Edward B. Reilly
Mr. & Mrs. John H. Rickman
Rita M James
Revocable Living Trust
Mr. William Rose
Mr. David P. Rost
Mr. & Mrs. Kurt B. Rothe
Mr. Martin Rubino
Michael & Libby Runge
Mr. Pedro Saavedra
Ms. Diana Scheeler
Mr. & Mrs. Roger Schinella
Mr. Ronald Schwenkler
Mr. James Sheridan
Mrs. Elizabeth Simon
Mrs. Eleanor M. Snyder
Sonnet Software, Inc.
Ms. Nikola Sponar
Mrs. Alice D. Stehle
Mr. John F. Stehle*
Mr. & Mrs. John Stiegelmeier
Mr. Brett J. Stone
Mr. Matthew P. Swit
T Rowe Price Program for
Charitable Giving
Mr. & Mrs. Philip Tobin
Mr. Tuan Trinh
Mr. Matthew Ungs
Mr. Thomas Van Thiel
Ms. Jacqueline Vitulli
Mr. Greg R. Wagner
Ms. Mary C. Walker
Wells Fargo Advisors
Mr. Gerald Wilde
Mr. & Mrs. Bruce Wilkinson
Dr. & Mrs. Robert Williams
Mr. John Wilson
Michael J. Wolohan, M.D.
Wolohan Family Foundation
Mr. & Mrs. Ross Yates
Ms. Patricia M. Young
Mr. Werner J. Zumbrunn
Mr. & Mrs. John Zurell
Mr. & Mrs. Andrew Zych

\$2,500+
Anonymous
Mr. Benjamin F. Adams, Jr.*
Mr. Michael G. Allare
Mr. & Mrs. Robert Almerini
Mr. Jose F. Alvarez
Mr. Joseph C. Amersbach
Mrs. Salvatore Attard
Ms. Gloria Avila
Ms. Rose C. Azar
Mr. George Balduf
Mr. Tadeusz Barbusinski
Mr. William B. Beck
Ms. Eileen M. Beck
Ms. Gladys Benton
Mrs. Dorothy M. Berkowski
Rev. Donald M. Berran
Mrs. Mary Bognich
Mr. James Bohan
Mr. Robert Booms
Mr. Stephen Botts
Thomas Burns, M.D.
Ms. Nancy Burt
Mr. Bill Bushnell
Mr. Thomas E. Byrne, Jr.
Mr. Hector Castillo
Mr. John Celani
Mr. Eugene Chatelaine
Mr. Robert Chavko
Ms. Suzanne M. Cheesman
Mr. & Mrs. Rick Chester
Mr. Francis Claffey
Community Foundation
of the Ozarks
Mr. Thomas S. Cooil
Mr. Leonard D. Cool
Ms. Joan M. Coss*
Mr. & Mrs. James Cote
Mr. William Crane
Elisabeth M. Crowley
Mr. Geraldo E. Cunha
Mr. & Mrs. Timothy Daly
Ms. Cecilia Daly
Daniel Lynch Foundation, Inc.
Mr. Dennis J. Daugherty
Mr. & Mrs. G. Berton Davis, Jr.
Thomas DeBoise
Mr. & Mrs. Edgar P. Devylder
Diocese of Joliet
Mr. & Mrs. Joseph F. Dols
Mr. Michael J. Duffy
Mr. Stanley Edwards

Eldon Community Foundation
George Engeler, M.D.
Mrs. Jacqueline B. Engelhart
Ms. Nancy M. Evans
Ms. Patricia Every
Mr. Kenneth J. Fallender
Mr. Joshua Farrar
Dr. Robert J. Ferretti
Mr. & Mrs. Leon J. Fiegel
Mrs. Barbara Fink
Mr. James Finley
Ms. Patricia C. Finnegan
Mrs. & Mr. Thomas Fitterer
Dr. John J. Fitzgerald
Mrs. Paschal Fitzgerald
Mr. Thomas J. Fitzpatrick
Mr. Eugene Flath
Ms. Suzanne M. Fleming
Mr. John C. Fleming
Mr. Sam Fletcher
Rev. Walter S. Florczyk
Mr. Thomas P. Fontana
Mr. & Mrs. John J. Freeh
Ms. Mary Gallagher
Mr. Henry P. Galmish
Gene Gardner
Dr. & Mrs. Robert A. Gasser, Jr.
Mr. Joseph Gassib
Mr. William J. Gilchrist
Rev. Joseph M. Gile
Mr. James Glinski
Mr. & Mrs. Herve Goguely
Mr. & Mrs. Harry E. Grant
Greater Houston
Community Foundation
Mr. & Mrs. John Grivetti
H.C.D. Foundation
Mr. Stephen Habernig
Ms. Violet M. Haelterman
Rev. Donald F. Haggerty
Karen & W. Stephen Hamlin
Ms. Mary Ann Hanzel
Mr. Frank Hayden
Deacon & Mrs. Tom Hayward
Ms. Carol Henrichs
Mr. William M. Hicks
Ms. Kathleen Higgins
Mr. John Hilgenberg
Mr. & Mrs. Joseph Hines
Patricia & Robert Hirt
Ms. Mary Hix
Ms. Mary E. Hoffmann

Ms. Betsy J. Holland
Hope for Haiti
Mr. Vittorio Hosle
Ms. Bonnie A. Hourigan
Mr. & Mrs. Mark Huber
Mr. Donald P. Hudok
Mr. & Mrs. Paul A. Hummel
Mr. & Mrs. George Hunter
Ignatius Ohno Foundation
J.P. Morgan Chase Foundation
Miss Mary F. Jablonskis
Mr. Wyn Jaccard
Dr. & Mrs. William Keenan
Mr. Philip Kenzora
Ms. Mary G. Kernaghan
Marshall Khant
Ms. Sungmi Kim
Mr. & Mrs. Michael Klein
Mr. Peter L. Knapp
Mr. Christopher P. Konrad
Mr. Francis E. Kruml
Mr. Michael Kuniak
Mr. & Mrs. Walter M. Lacyk
Mr. Herbert Lane
Mr. John Larrinaga
Mr. & Mrs. Chris Laursen
Mr. Andrew M. Lee
Ms. Kathleen M. Leonard
Mr. Robert M. Lesmerises
Mr. & Mrs. Lawrence A. Liddiard

Mr. Benjamin Locher
Mr. Joseph M. Lomangino
Mr. Theodore E. Lombard*
Mr. James M. Longville
Ms. Mary Lubbers
Mr. & Mrs. Alexander Lyczak, Jr.
Mr. David Madden
Marilyn & Daniel Maher
Mr. Robert Maier
Marks Paneth & Shron
Mr. James J. Mason
Mr. Richard Mattione
Mrs. Ronald P. McArthur
Mr. John McBride
Mr. John T. McBryde
Lawrence J. McCarthy, M.D.
Brian & Jacqueline McCauley
Michael F. McCormack, M.D.
Miss Sarah McCoy
Mr. & Mrs. Frank McCreesh
Ms. Sandra McGinnis

“After my mission trip to Mwandi Mission Hospital, I saw how much they do with so little.”



Our Supporters *(continued)*

“I give in memory of my deceased wife and the gift she was to me and our 12 children.”

- Thomas J. McIntee, M.D.

Rev. Hugh McManus

Medical Missionaries, Inc.

Mrs. Marie Meier

Merck Employee Giving Campaign

Ms. Jolynn Meza Wynkoop

Ms. Mary M. Middendorf

Mr. Leonardo Milano

Mr. Matthew Moffit

Dr. & Mrs. Matthew B. Monesmith

Ms. Mary Morgan

Mr. Robert E. Morris

Mr. Clark Muehlbronner

Mr. Robert W. Murphy

Mr. John Nack

Mr. George Nagy

Msgr. John Neff

Miss Rebecca Neuwirth

Mr. Matthew P. Nickson

Nightlight Foundation

Mr. William V. O'Connor

Mr. & Mrs. Tom O'Connor

Ms. Maureen O'Leary

Rev. Edward A. O'Melia

Mr. & Ms. Gerry Page

Dr. & Mrs. Arun A. Patil

Mr. Mike L. Pawlowski

Mr. & Mrs. Thomas R. Pendergast

Miss Mary C. Perkins*

Mr. Conrad Person

Pikes Peak Community Foundation

Mr. David Pinter

Mrs. Mary Piowaty

Mr. Thomas W. Planek

Ms. Laura M. Pliska

Mr. & Mrs. Roger E. Podesta

Poor Clare Nuns

Mr. Manuel Porrez*

Ms. Kathleen M. Potts

Mr. & Mrs. Michael Quigley
- Mr. & Mrs. Peter A. Quinn

Raymond James Charitable Endowment Fund

Ms. Karen Reabe

Mr. & Mrs. Arthur J. Ready

Mr. Anthony C. Reding

Rev. Thomas J. Reilly

Mr. James Reilly

Renaissance Charitable Foundation, Inc.

Deacon & Mrs. William A. Ritchie

Mr. Russell Robben

Mr. & Mrs. Boyd K. Roberts

Mr. James B. Robinson

Mrs. Martin M. Rockers

Mr. Gregg Ruppertsberger

Mr. William Ruth

Mr. John Saam

Mr. Nader Sabet

Ms. June M. Sambrowski

Mr. Andrew Sarofim

Ms. Fran Saul

Ms. Helen Schaefer

Mr. John Schafer

Mr. & Mrs. Kurt F. Schmidt

Mr. Warren A. Schneider

Ms. Karen K. Schulte

Mr. Fred Schulz

Rev. Donald P. Sheehan

Rev. Francis X. J. Smith

Mr. & Mrs. Wayne Snelson

Mr. & Mrs. Joseph L. Stankowski

Dr. Elin Stiegeler

Mr. Theodore Stone

Ms. Mary L. Strouse

Mr. Sungman Suh

Dr. & Mrs. Michael J. Sullivan

Mr. James M. Sullivan

Mr. Frank L. Sullivan, Jr.

Rev. Gary S. Sumpter

Mrs. Sophia Svelund

Mr. Joseph N. Swab



- Marianne Szawaluk
- Mr. & Mrs. Bernard Tansey
- Mr. & Mrs. Domenic J. Tarducci
- Dr. & Mrs. Atef M. Tawadros
- The U.S. Charitable Gift Trust
- Mr. Stephen Thomas
- Mr. & Mrs. Tommy Townsend
- Ms. Lynne C. Tuohy
- Dr. & Mrs. Barth Vander Els
- Ms. Aimee Villapando
- Mr. & Mrs. Frederic Watke
- Mr. & Mrs. Grivetti Watts
- Mr. & Mrs. Jeff Weber
- Mr. John Weber
- Dr. & Mrs. Joel T. Weigand
- Mr. & Mrs. William M. Wendell
- Mr. Jacob Wiechman
- Ms. Lia Wilson
- Mr. & Mrs. Thomas Young
- Mr. Joseph V. Zalner
- The Zalner Foundation
- Mr. Timothy Zelenak
- Mr. James P. Zimmerman

* Denotes Deceased Donors

“I cannot go overseas and be the hands of Jesus as others do. I do not have medical training as others do. But I do have the call, the invitation, to do what I can. CMMB allows me the great privilege of helping those who can make a difference.”

The Legacy Society

The Legacy Society recognizes those individuals who have provided for the long-term work of Catholic Medical Mission Board by making a planned or deferred gift. Their commitment, made during their lifetime, enables CMMB to plan for the future and meet long-term goals from a position of strength. Lifetime membership is bestowed on individuals who have enrolled in the Annuity Program or have named CMMB as a beneficiary of their will, trust, life insurance, or IRA.

Annuity Members

The following individuals opened a charitable gift annuity with CMMB, providing the annuitant with a guaranteed income for life and the knowledge that they have made a meaningful gift that will benefit women and children in years to come.

- Mrs. Margaret F. Agnew

Mrs. Alberta Attanasio

Ms. Beatrice Barrera

Miss Stella Bejnarowicz

Mr. Dennis L. Beshara

Ms. Cecilia A. Braam

Ms. Josephine Brienza

Mr. Edward Briody

Mr. Walter J. Broscius

Ms. Hildegard B. Buel

Ms. Mary E. Burke Nash

Ms. Geraldine F. Burton

Mr. Thomas E. Byrne, Jr.

Dr. Mary D. Cancellare

Mrs. Iris Castillo

Ms. M. Jeanne Cayo

Dr. Jessalyne L. Charles

Ms. Janet T. Christopher

Miss Irene T. Constantine
- Mr. Robert R. Daquin

Rev. Stephen Deaver

Miss Dorothy M. Desmond

Mrs. Carmela M. Di Spigno

Miss Patricia K. DiComo

Mrs. Rita M. Dinges

Mr. & Mrs. Joseph E. Dispigno

Mrs. Mary Lou Dobihal

Ms. Gloria Duday

Mrs. Joyce J. Dumas

Mrs. Lynda Eckes

Dr. Barbara J. Fleischer

Miss Mary J. Foster

Ms. Grace M. Frey

Mr. Paul Gagnon

Ms. Joann Gavitt

Mr. & Mrs. Donald R. Giasson

Mr. & Mrs. Harry Grant

Ms. Geraldine C. Guggemos
- Ms. Martha R. Hacala

Ms. Anna M. Hafeli

Mrs. Dorothy J. Heberlein

Mr. John D. Herrick

Mrs. Catherine Horn

Mr. Leo J. Iannuzzi

Rev. Donald R. Imming

Rev. Thomas P. Ivory

Rev. Arthur J. Jakobiak

Dr. William J. James

Mr. Joshua Jasso

Mrs. Margaret A. Jurgens

Mrs. Cecilia V. Kallay

Mr. Charles Kiddy

Mr. Robert K. Krause

Mrs. Mabel I. Lane

Ms. Josephine G. Laux

Mr. John Leinenweber

Mr. & Mrs. John A. Lomurno

Mrs. Marguerite M. Luckhowec

Mr. Francis J. Mahoney, Jr.

Mr. & Mrs. George A. Martin

Mr. Michael Mastriano

Mr. & Mrs. E. James. McTighe

Cdr Florence C. Mcdonald Ret USN

Mrs. Anita M. McDonough

Mr. Thomas M. McDonough

Mrs. Cecilia McShea

Mr. Francis Meekin

Ms. Elizabeth F. Miller

Mr. Joseph R. Mitosinka

Msgr. Frederick J. Murphy

Mrs. Corry S. Nethery

Rev. John J. Newell

Mr. Ronald R. Oberle

Ms. Kathleen A. O'Connor

Ms. Teresa M. Ontra

Mr. & Mrs. Joseph J. Pello

Mrs. Donna J. Phoenix

Mrs. Viola Piscatelli

Mr. & Mrs. Norbert Pittner

Mrs. Gloria D. Plog
- Mrs. Susan Porter Robinson

Mrs. Estelle M. Postel

Mrs. Mary C. Powers

Mrs. Huay-Min Pu

Mr. Robert G. Pumford

Mrs. Katherine D. Quigley

Mr. & Mrs. Thomas Quinlan

Ms. Rosemary Rea

Mr. & Mrs. James E. Reilly

Ms. Karen Riedl

Mrs. Judy N. Riggs

Mr. & Mrs. Kenneth Rizzuto

Miss Frances A. Romeo

Ms. Angela P. Rosania

Mrs. Rita Rose

Rev. Robert C. Rosing

Mr. & Mrs. Ronald C. Rossi

Mr. David P. Rost

Dr. & Mrs. Donald C. Salzano

Miss Angelita S. Santos

Mr. William Schlegel

Ms. Joan E. Schmitz

Ms. Karen K. Schulte

Mr. Richard L. Schwaller

Mr. Thomas P. Sheridan

Mrs. Marion R. Smith

Miss Helen P. Stegun

Mr. Edward C. Tarte

Mr. & Mrs. James Trowbridge

Miss Lillian M. Tupac

Miss Norma Ulivo

Ms. Frances M. Vincent

Rev. Richard F. Wagner

Mr. & Mrs. David Wagner

Msgr. James E. Wall

Mr. & Mrs. Gerard A. Weigel

Yvonne White

Mr & Mrs. Paul Wilson

Miss Gwendolyn Worrell

Ms. Felice Zaldokas

Mr. Andrew Zeko

Mr. & Mrs. George E. Zenie

Mr. Benjamin F. Adams Jr.



Our Supporters *(continued)*

Planned Gift Members

The following individuals have named CMMB as a direct or residuary beneficiary in their will, trust, or other estate plans.

Mr. Eric D. Aanestad
Edward Albertone Trust
Ms. Mary Anderson
Mr. Blaise C. Barrios
Ms. Rita Becker
Ms. Carolyn M. Bednarek
Mr. Raymond J. Berardi
Mrs. Virginia B. Birge
Mr. Robert V. Bledsoe
Victor A. Blenkle Trust
Miss Harriet Bly
Miss Margaret Brosnan
Mrs. Patricia L. Burgmyer
Ms. Mary Burke
Ms. Marylane Burry
Mr. Joseph F. Callahan
Mr. Joseph Cantelli
Ms. Anne G. Chipetta

Mr. Thomas S. Cooil
Ms. Josephine M. Cormack
Rev. Allen F. Corrigan
Ms. Joyce Costello
Ms. Margaret J. Cummings
Ms. Barbara H. Cunningham
Mr. Patrick J. Delmore
Mr. Michael G. Devine
Ms. Margaret Drury
Miss Mary J. Drury
Mr. Denis D. Durnan
Mr. Jim Duszak
Mrs. Mary Ann C. Earles
Mr. Charles J. Erpenbeck
Miss Cynthia Felch
Mr. Daniel J. Fennell
Mr. William Forno
Miss Mary J. Foster

Ms. Clare Francis
Ms. Grace M. Frey
Ms. Jane Fuegner
Mr. Peter J. Galligan
Rod & Ita Gillis
Mr. Donald J. Glaser, A.S.I.D.
Ms. MaryAnn Gleeson
Ms. Eleanor Glock
Miss Catherine Goebel
Mr. P. Vincent Grado
Mrs. Mary Harbour
Mr. Robert R. Hawkins
Mr. Wayne J. Hemmen
Ms. Margaret M. Hoffman
Mrs. Suzann C. Horn
Mr. Joseph Hovnanian
Dr. William J. James
Mr. Don Jank
Mr. Michael Jenkins
Mr. David S. Kamide
Ms. Joanne Kenny
Ms. Carol M. Kerler
Mrs. Kathleen P. Kinahan
Mrs. Mary P. Kluck
Mrs. Marilyn Knor
Mr. David J. Koch
Mr. Greg Konrad
Mr. Charles Kronenwetter
Mr. David O. Lee
Mr. David Lee
Ms. Suzanne Lee
Mr. Robert M. Lesmerises
Mrs. Margaret Longto
Mrs. Carol H. Luders
Rev. Eamon Mackin
Mr. T. J. Maguire
Mrs. Claudine A. Marcoux
Mrs. Kathleen O. Martin
Mr. Dave F. McBride
Ms. Mary McConihe
Mrs. Ann F. McHugh
Ms. Virginia McLaughlin
Mr. Donald R. Messina
Miss Gertrude Meyer
Ms. Jeanne E. Micheleni
Mrs. Mary L. Mihm
Father Michael Moon
Mr. John P. Moran

Miss Barbara A. Moroson
Mrs. Patricia Morrissey
Mr. Richard J. Murray
Mrs. Mary E. Nolan
Brian W. Norkett
Estate of Angeline Normand
Mr. William Nugent
Rev. Msgr. Timothy O'Connell
Rev. Jeremiah O'Shea
Mr. Donald W. Ottens
Jon M. Owings, M.D.
Mr. Richard H. Pelkey
Mrs. Mary Ann Pezzullo
Miss Therese F. Pick
Mrs. Viola Piscatelli
Mrs. Susan Porter Robinson
Mr. Lozelle L. Pratt
Mrs. Teresa F. Przybylski
Ms. Mary Putschi
Mrs. Nuala M. Quill
Miss Geraldine Rehill
Ms. Elizabeth M. Rice
Ms. Mary Ann Richter
Mr. James P. Ryan
Mr. Laurence Schlegel
Mr. Paul Schullian
Mr. D. R. Schultze
Mr. William Simpson
Ms. Virginia Smith
Mr. Jim Sponsler
Mr. Charles Steer
Mr. George A. Stefani
Ms. Kathleen Stegeman
Mrs. Mary E. Stewart
Mr. Daniel Sweet
Mrs. Anne D. Taylor
Ms. June L. Temple
Mr. Harold J. Thalheimer
Mr. Kyle S. Thibodo
Ms. Rita F. Tobin
Mr. Richard B. Trefny
Ms. Billie F. Vance
Mrs. Florence A. Walsh
Mr. Francis M. Whitesell
Rev. M. R. Yosso
Ms. Patricia A. Zeimis
Mr. Stanley M. Ziemnicki

Bequest Members

The following individuals are posthumously enrolled into the Legacy Society for having provided CMMB with a gift from their estate in 2018. We are indebted to their generosity and remember them in our prayers.

Ms. A. Dorothy Arthur
Mr. James E. Audino
Mr. Robert Bieluczyk
Ms. Camille Caliendo
Mr. Armando J. Caruso
Miss Helen F. Chetner
Mr. Eugene B. Ciechanowski
Ms. Joan M. Coss
Mr. George E. Gibert
Ms. Norma J. Idzinga
Ms. Dorothy E. Kent
Mrs. Mary M. Koch
Mr. Kenneth J. Kotas
Miss Anna E. Kovaly
Mr. Walter L. Lalor
Ms. Dolores Layko McCarthy
Miss Pauline Lisse
Mr. William R. Loichot

Mr. Theodore E. Lombard
Mr. Charles J. Lowery
Rev. Richard F. Maichen
Mary Eckstein
Mr. Frank Masiello
Mrs. Mary H. Mulholland
Ms. Adelaide C. Murphy
Mr. John J. Neumayer
Miss Mary C. Perkins
Mr. Manuel Porrez
Mr. Michael Rinaldi, Jr.
Ms. Catherine A. Rogers
Mr. William C. Schmitt
Ms. Frances S. Schueler
Rev. John B. Stawasz
Mr. Richard W. Terrill
Mr. Edward B. Timko
Mr. John P. Wood



“Of the many charities Dad supported, he had a favorite—CMMB—which he described to us as ‘one of the finest charitable organizations in the world.’ Now Dad’s legacy of helping ‘the least of these’ (Mathew 25:35-40) lives on.”



Institutional Partners

CMMB gratefully acknowledges the governments, multilateral and bilateral agencies, corporations, foundations, and organizations that support our work.

Multilateral and Bilateral Agencies

Centers for Disease Control and Prevention
The Global Fund to Fight AIDS, Tuberculosis and Malaria
PEPFAR
United Nations Development Programme
UNICEF
United Nations High Commissioner for Refugees
U.S. Department of State/Office of the Global AIDS Coordinator
U.S. Agency for International Development
World Food Programme

Corporations

Bank of America Charitable Gift Fund
Bristol-Myers Squibb Foundation
CA Inc. Matching Gift Program
Candlelight Storage LLC
Charles Schwab Charitable
Fidelity Charitable Gift Fund
GE Foundation Matching Gift Program
Goldman Sachs Philanthropy Fund
John Snow, Inc.
Johnson & Johnson
JP Morgan Chase Bank, N.A.
KPMG
Los Alamos National Laboratory
LPL Financial
Merck & Co., Inc
Paul Global Benefits
Paypal Giving Fund
Procter & Gamble

Runnebohm Construction Co., Inc.
Sonnet Software, Inc.
TIAA
T Rowe Price Program For Charitable Giving
United Therapeutics Corporation
UnitedHealth Group
The U.S. Charitable Gift Trust
Vanguard Charitable Endowment Program
Wells Fargo Advisors

Foundations

Adolph & Ruth Schnurmacher Foundation
African Mission Healthcare Foundation
American Endowment Foundation
The Atlantic Philanthropies
Aurora Humanitarian Initiative Foundation
Caris Foundation
The Catholic Foundation
Chesapeake Charitable Foundation
Cornelius Family Foundation, Inc.
William C. Dowling, Jr., Foundation
Edmund Rice Foundation of Australia
GHR Foundation
Giffuni Foundation
The Greater Cincinnati Foundation
Hope for Poor Children Foundation
J. Homer Butler Foundation
KLM Foundation
Love Meyer Family Foundation
Loyola Foundation
Mary Cross Tippmann Foundation
The McDonald Family Foundation
Milton & Fannie Brown Family Foundation

The Mushett Family Foundation
The New York Community Trust
Noster Foundation
O'Shea Family Foundation
Quentin J. Kennedy Foundation
Raskob Foundation for Catholic Activities
Roncalli Foundation
The Catherine M. Walsh Foundation

Organizations

The Agnes Varis Charitable Trust
Amref Health Africa
The American Gift Fund
Benevity
Bon Secours Health System
Catholic Health Services of Long Island
Church of the Good Shepherd
Cistercian Nuns
Combined Federal Campaign
Damien-Dutton Society
Fidelis Care New York
Food for the Poor, Inc.
Grey Nuns of the Sacred Heart
Kenya Red Cross Society
The McGonigle Family Trust
Mercy Health
Network for Good
Pact, Inc.
Presence Health
Sisters of Charity of the Incarnate Word
Sisters of the Sorrowful Mother Generalate
St. Catherine's University
Sudan Relief Fund

Thank You for Making a Difference

“Each one must give as he has decided in his heart, not reluctantly or under compulsion, for God loves a cheerful giver.” —2 Corinthians 9:7

Firm in our faith, Catholic Medical Mission Board has been providing quality healthcare and dignity to the poor for more than a century. CMMB’s core values of love, collaboration, excellence, and respect have stood the test of time, and we’ve grown into a global, faith-based, humanitarian organization, thanks to your steadfast generosity and compassion.

As we carry out our shared mission to serve vulnerable women, children, and families in need, we hope you will continue to partner with us.



How Can You Continue to Help Advance Our Shared Mission?

Give – Your tax-deductible gift to CMMB will enable us to continue to deliver sustainable, impactful healthcare programs and services and essential medicines and supplies to the most vulnerable among us.

Support Our Mission in Other Ways

Join the Legacy Society – By naming Catholic Medical Mission Board in your will or as a beneficiary of your life insurance policy or remaining IRA funds, your legacy of compassion and generosity will live on for millions of children and families around the world.

IRA Distribution – Supporters who are 70½ years or older can make a distribution from your IRA to CMMB for up to \$100,000 without reporting the withdrawal as taxable income.

Gifts of Securities – You may avoid capital gains tax on securities held long-term and provide a tax deduction equal to the fair market value at the date of transfer.

Donor Advised Funds – Donor advised funds are an increasingly popular way to support CMMB with funds you have already set aside for charitable purposes. Please consider making a grant to CMMB through our DAF Direct portal by going to cmmb.org/DAF.

Matching Gifts – You can double the impact of your gift if you or your spouse work for a company with a matching gift program.

Please contact our Partnerships Team directly at 212-609-2597 if you have any questions or need assistance in making your donation to CMMB.

Volunteer Opportunities – Are you interested in volunteering for CMMB? To learn more, please contact us at volunteer@cmmb.org.

Gifts in Kind

CMMB is grateful to the following donors for their generous in-kind and pro bono support of our mission.

Mylan	Johnson & Johnson	BD	Pfizer Inc.
Accord Healthcare, Inc.	Restoring Vision	Henry Schein, Inc.	medi for help
Apotex, Inc.	BioComp Pharma Inc.	Mission Pharmacal Company	St. Joseph Hospital
Eli Lilly & Co.	Integra LifeSciences	Bon Secours Health System	Unipharm, Inc.
Merck & Co., Inc.	Carlsbad Technology, Inc.	Bloomberg	Mercy Health

CMMB thanks all our generous supporters and gratefully acknowledges your contributions. Our sincere apologies to anyone whose name was inadvertently omitted from this list.

Stay in Touch

Catholic Medical Mission Board
100 Wall Street, Floor 9, New York, New York 10005, 800-678-5659
Visit www.cmmb.org and sign up for our newsletter or our Sunday Weekly Reflections



CMMB Leadership

Board of Directors

Officers

Chair: Rosemary Moynihan, S.C., Ph.D. <i>General Superior, Sisters of Charity of Saint Elizabeth</i>	Treasurer: Richard J. Statuto, M.B.A. <i>President and CEO, Bon Secours</i>
Vice Chair: Nicholas D'Agostino, III <i>Chairman and CEO, D'Agostino Supermarkets</i>	Secretary: N. Regina Rabinovich, M.D., M.P.H. <i>ExxonMobil Scholar in Residence, Harvard TH Chan School of Public Health at Harvard University</i>

Members

John M. Starcher, Jr., J.D. <i>President and CEO, Mercy Health</i>	Edward J. Giniat, C.P.A. <i>Partner, KPMG</i>
Matt Malone, S.J., M.A. <i>President and Editor in Chief, America Magazine</i>	Desmond G. FitzGerald <i>President, Hope for Poor Children Foundation</i>
Conrad Person <i>Retired Director, Johnson & Johnson, Charitable Giving Fund</i>	Maria R. Robinson, M.D., M.B.A. <i>Dermatologist and Dermatopathologist, the Raskob Foundation for Catholic Activities</i>
Robert E. Robotti, M.B.A. <i>Principal, Robotti & Company, LLC</i>	Antoine Ezell, M.B.A. <i>Vice President, Connected Care and Insulin, Eli Lilly and Company</i>
Katherine A. Taylor, M.Sc., Ph.D. <i>Director of Global Health Training, Eck Institute for Global Health, University of Notre Dame</i>	Carol Zinn, S.S.J., M.Th., Ph.D. <i>Executive Director, Leadership Conference of Women Religious</i>
Patrick William Kelley, M.D., Dr.P.H. <i>Distinguished Fellow in Nursing and Health Studies, Marion Peckham Egan School of Nursing and Health Studies, Fairfield University</i>	John E. Celentano, M.B.A. <i>Senior Advisor in the Life Sciences Industry Managing Director, J Celentano Advisory Services LLC</i>
Michael P. Hilbert, S.J., J.C.D. <i>Associate Pastor, St. Ignatius Loyola Parish New York</i>	Jeanmarie C. Grisi <i>Chief Investment Officer, Pension Investments, Nokia</i>

CMMB Executive Team

Bruce Wilkinson, M.B.A.	<i>President and CEO</i>
Michael O'Hara	<i>Chief Financial Officer</i>
Dick Day	<i>Senior Vice President, Programs and Volunteers</i>
Meseret Ansebo	<i>Vice President, Human Resources</i>
Peggy O'Neill	<i>Vice President, Partnerships</i>
John Mix	<i>Vice President, Marketing and Communications</i>

CMMB Country Directors

Ariel Frisancho, M.D.	<i>Country Director, Peru</i>
Dianne Jean-François, M.D., M.P.H.	<i>Country Director, Haiti</i>
James Kisia, M.D.	<i>Country Director, Kenya</i>
John Perry	<i>Country Director, South Sudan</i>
Batuke Walusiku-Mwewa, M.Sc.	<i>Country Director, Zambia</i>

Financials

Stewardship in Fiscal Year 2018, in US Dollars

Donated Goods & Services	\$ 709,138,836
<i>Pharmaceuticals and Medical Supplies</i>	703,685,270
<i>Medical Volunteers Program</i>	5,453,566
Contributions & Other Revenue	\$ 30,943,449
<i>Government</i>	10,757,700
<i>Individuals</i>	15,398,628
<i>Corporations, Foundations and Organizations</i>	3,422,799
<i>Trust and Estates</i>	1,347,510
<i>Other</i>	16,812

TOTAL SUPPORT THROUGH SEPTEMBER 30, 2018 **\$ 740,082,285**

Program Services Expenses	\$ 625,653,193
<i>Pharmaceuticals and Medical Supplies</i>	599,452,903*
<i>Medical Volunteers Program</i>	5,937,856
<i>Support for Health Projects</i>	20,262,434

Supporting Services Expenses	\$ 10,421,375
<i>Fundraising</i>	5,481,853
<i>Administration</i>	4,939,522

TOTAL EXPENSES THROUGH SEPTEMBER 30, 2018 **\$ 636,074,568**

Beginning net assets: \$ 107,160,268

Ending net assets: \$ 212,612,224

* Excludes \$109 million of pharmaceuticals and medical supplies received in September 2018 that will be distributed in fiscal year 2019.



CMMB Rated
Four Stars,
Eight Years in a Row



Meets Better
Business Bureau's
20 Standards for
Charity Accountability



And It Continues With You



cmmb

Healthier Lives Worldwide

Catholic Medical Mission Board

100 Wall Street, Floor 9, New York, New York 10005, 800-678-5659