



**cmmmb**

# It Begins With You

**2018 Annual Report**



Dear Friends,

It is with heartfelt gratitude that we dedicate the 2018 Annual Report to you, our generous supporters. Your deep commitment to those in need inspires us every day. Together, the stones of love and compassion that we cast are forming ripples that flow far and wide, providing care, creating hope, and shining a light so that others might follow. Together in faith, we are advancing our shared vision and mission to provide quality healthcare to the most vulnerable women, children, and communities with love, dignity, and respect.

We are one human family, and this belief unites and brings us closer to God and to the people we serve. In the most challenging times we have drawn our strength from your generous support and prayers. At the most difficult moments, we knew we could count on you.

As you read through this Annual Report, know that it is because of your generosity and compassion that we made great strides in improving the health of communities impacted by poverty, reaching more than one and a half million people with access to quality healthcare.

You helped alleviate suffering. You helped heal wounds. Most importantly, you helped bring hope to those who felt hopeless. Thank you for your trust and companionship in this journey toward healthier lives worldwide.

In faith and friendship,

A handwritten signature in cursive script that reads "Bruce Wilkinson".

Bruce Wilkinson  
President and CEO  
CMMB

# Our Vision

A world in which every human life is valued, and health and human dignity are shared by all.

Dear Friends,

St. Vincent de Paul counseled that “Charity is the cement that binds communities to God and persons to one another.” In the Gospel of Matthew, Jesus urged the Apostles not to send the hungry away but to “... give them some food yourselves.”

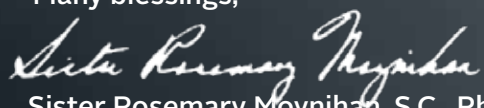
This is what Catholic Medical Mission Board (CMMB) donors and staff are all about: binding people, those with resources and those most in need, to each other and to our loving God. The mission of CMMB is to work in partnership globally to deliver locally sustainable, quality health solutions to women, children, and their communities. Partnerships with our donors, local country staff, pharmaceutical companies, other international service providers, volunteers and communities, and more are core to the effectiveness of this work.

These life-giving partnerships continue to grow and strengthen each of our CHAMPS and other service sites in the global community.

In the face of widespread chaos, confusion, and natural disasters, it is important to take time to recognize and celebrate the vital efforts that you help shape to make the world a better place. The Spirit of God is active among us. Together, we are fulfilling a vision to bring about a world in which every human life is valued, and health and human dignity are shared by all.

I encourage you to read CMMB’s 2018 Annual Report as a partner in this life-giving Mission of Jesus. Thank you for providing “food” and resources, for helping to cement communities in health and hope, and for responding to God’s grace in your lives by loving others.

Many blessings,



Sister Rosemary Moynihan, S.C., Ph.D.  
Board Chair  
CMMB

## Our Mission

Inspired by the example of Jesus, CMMB works in partnership globally to deliver locally sustainable, quality health solutions to women, children, and their communities.

# The Big Picture in 2018—Thanks To You

For over a century, we have worked globally to improve the health and well-being of people living on the margins of society and to alleviate their suffering. Inspired by the generosity of many, we work in partnership with local communities, governments, volunteers, and other relief organizations to implement sustainable solutions to improve the health of women and children, strengthen local health systems, and respond to global emergencies.



**1,536,844**

people received critical health and social services from CMMB



**74,240**

pregnant women received support for their pregnancies



**889,155**

people received HIV services



**206,840**

children under five received essential healthcare services, including check-ups, vaccinations, and growth monitoring



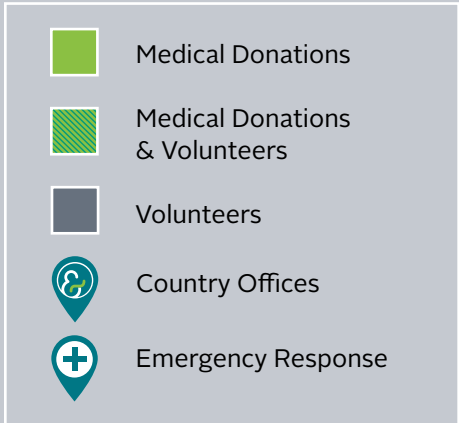
**92,920**

volunteer hours served, with 661 volunteers working in 17 countries



**\$598M**

worth of donated medicines and medical supplies distributed in 34 countries



# Change Begins with Her

## Women and Children Transform Communities

**W**omen and children are among the world's most vulnerable populations, disproportionately affected by illness, poverty, and economic disparities. When we empower women to overcome the effects of poverty and poor health, they can and will live full and productive lives—and so will their children, families, and communities—eventually transforming the world. We also know that when you invest in women, they invest in others. Women working together can lift a whole community out of poverty. Research shows that investing in the health of women and children saves millions of lives and yields significant returns, potentially up to nine times the value of the initial economic investment.

*“There is no tool  
for development  
more effective than  
the empowerment  
of women.”  
—Kofi Annan*

### It Begins with My Faith

Margaret has been supporting CMMB's work since 1962, after securing her first job as a secretary in Manhattan. At a time that she earned \$75 a week, her first gift was \$5. And she's been giving ever since.



“I grew up in an Irish-Catholic family, in a two-family home, with my parents, grandparents, aunts, and cousin. It was a simple life, but my parents sacrificed for me and my brother. Our Catholic faith was really the center of our lives.”

Thanks to the love and care she received as a girl, Margaret learned the value of a strong family. This is what motivates her to support CMMB's efforts to improve the lives of mothers, children, and their families. Like all of us at CMMB, she knows that strengthening families starts by investing in mothers, because they invest in others. She jokingly refers to herself as a “cowardly missionary”—and loves that CMMB serves as the bridge to her adopted children and families around the world. “I love CMMB's missionary spirit and admire so much the volunteers and staff, who work in often dangerous places to create better lives for those who often have little hope.”

*“With my contributions, I am sending my love to the women  
and especially the children in those faraway lands.”*

Margaret believes strongly in empowering women with economic opportunity and the skills to manage money—skills she came to appreciate after her husband passed away. “I am most proud of the way I have been able to manage my life and resources. I have gone from feeling lost and unsure to telling myself that I could actually do what had to be done and praying every day that I make good choices.”

When we asked Margaret to share a message with our CMMB family about how to make a positive difference in the world, she replied, “I was a rather shy, very quiet child, who really worried that I wouldn't get 100% on the test on any given day. It has taken me a long time to know that you really don't have to get 100% every day. Just do your best, with good intentions.”



# Transforming Lives Begins with CHAMPS

Delivering on the Promise of a Better Future

Through our innovative **Children and Mothers Partnerships (CHAMPS)** we make a long-term commitment to a community to provide health and opportunity to its vulnerable mothers and children. We believe women and children are key to a prosperous society and through **CHAMPS**, we are providing essential medicines, supplies, and medical equipment to health facilities. We are increasing access to safe water and sanitation. We are improving nutrition and livelihoods for the most vulnerable. By investing in their health and dignity, we are giving women and children an opportunity for a better future. Our interventions are working, and together we are saving many lives.

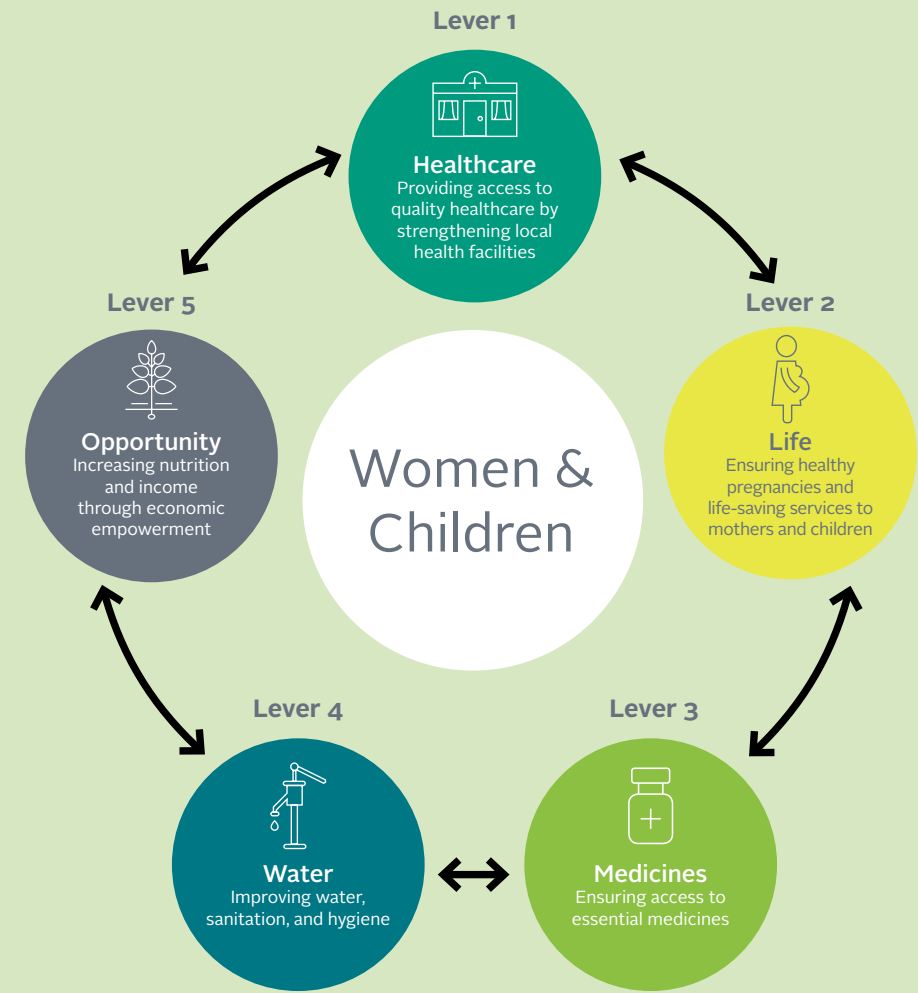
*“Without a solution to the problems of the poor, we will not solve the problems of the world.”*  
—Pope Francis



## Our CHAMPS Model

**CHAMPS** brings together five key levers to create healthy and prosperous communities. **CHAMPS levers 1, 2, and 3** ensure high quality health services to save lives and build healthy communities. **CHAMPS levers 4 and 5** address environmental issues and tackle the root causes of poor health and extreme poverty.

Through our **Join Hands for CHAMPS Campaign** we are seeking to improve the health of one million people by scaling up the **five levers of our CHAMPS program**.



*As you read about our progress, please know it is possible only because of your generosity and compassion.*



# Strong Health Systems Change Lives

A well-functioning health system—with properly equipped facilities, well-trained health workers, and easy access by communities—is central to improving health outcomes. At each of our **CHAMPS** health facilities, we focus on training community health workers, improving clinical services, and ensuring that services are known to and reachable by those in need.

## Expanded Access to Health Services in 2018

On Haiti's desperately poor southeastern coast, our trained and trusted community health workers are encouraging families to seek care at CMMB's **Bishop Joseph M. Sullivan Center for Health (BJSH)**, and it is working. Since it opened its doors on March 20, 2017, the number of patients accessing care has steadily increased, with over 8,951 treated and 167 safe deliveries in 2018.

Thanks to the high quality of care that patients receive at the hospital, word is spreading that the **BJSH** is a health facility families can trust. It is because of supporters like you that this hospital exists and that women and children in nearby communities are able to access care that is critical to their health and well-being.

### Jacinthe's Miracle

Jacinthe was well past her due date when she arrived at the **BJSH** seeking care. The doctor on duty ran tests and confirmed that Jacinthe's baby was in danger. He rushed her into the operating room for an emergency C-section. When the baby was delivered, she was completely blue and not breathing.

*"I knew something was wrong, but I wasn't fully conscious and I didn't realize what was happening."* —Jacinthe

Dr. Dorothy Emiliem—our project officer and an anesthesiologist—was called to the hospital to support the surgical team.



She used physical stimulation, suction, and oxygen to get the baby breathing. Within minutes, the newborn was crying and alert. Because of your generosity, the **BJSH** is able to provide pregnant women with quality healthcare and a safe place to bring their babies into this world.

Photo: Mark Lee Steed



### 2018 Impact

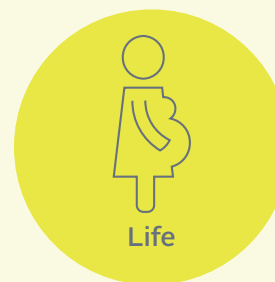
- 1,665 community health workers and volunteers trained
- \$500,000 invested in health facility improvements
- Dental clinic opened

*"The doctors and the hospital are a blessing to me. They saved my child's life. If I had delivered her at home, like my other children, I would have lost this baby."*  
—Jacinthe



## 2018 Impact

- **71,334** women received antenatal care
- **11,928** safe facility-based deliveries
- **206,840** children under five received health services



## It Is All About a Healthy Start

Each day, 821 women die from complications during childbirth. Every year, 5.6 million children die before their fifth birthday. We believe everyone deserves a healthy start to life. Our **Life** initiatives provide pregnant women with access to prenatal and facility-based obstetric care, which greatly increase the odds of a safe delivery. Children under five receive essential health services to prevent common illnesses that can lead to death.

In South Sudan, maternal death rates are among the highest in the world. Encouraging mothers to deliver at a health facility vastly improves their health outcomes. St. Therese Hospital is the heart of our **CHAMPS** program and home to our **Safe Motherhood Program**, which mentors community health volunteers, who in turn teach pregnant women about the importance of seeking prenatal care and having a skilled birth attendant. In 2018, CMMB broke ground on a new operating room, maternity and surgical wards, and the region's first blood bank, significantly improving the hospital's ability to provide emergency services for high-risk pregnancies and to address cases of severe malnutrition in children.

### A Chance at Life

Four months after their wedding, Sarah and Martin Rubino set out for a year to serve in South Sudan at St. Therese Hospital through our Volunteer Program. Sarah served as a nurse and midwife in the **Safe Motherhood Program**, and Martin was the lead engineer for the hospital's expansion project.



Sarah helped deliver many babies at the hospital, but one was particularly special. After a difficult delivery in which both mother and child nearly died, Sarah recounted:

"The next day, I visited Nevar and her daughter. Nevar, beaming, showed me her daughter in her new little outfit. With a smile, the grandmother then told me, in English, what they had named the newborn girl. I couldn't hold back my joy—they had named her Sarah. Without all of the support of CMMB's amazing donors, who help to provide medications and supplies, without those who supported me and my husband to come to Nzara, and without my teachers along the way, Nevar and her baby would not be alive today."



## Ensuring Access to Essential Medicines

**W**e are all familiar with the great debate about the cost of medicine. But for 5 billion people in the most under-resourced part of the world, accessing essential medicines is not possible at any price. At hospitals and clinics around the world, our **Medical Donation Program** helps fill gaps in medical inventories by providing free medicine and medical supplies. Supporting a consistent and stable supply chain of essential medicines at our **CHAMPS** health clinics is a key priority of this program, in collaboration with pharmaceutical partners. In times of emergencies, such as a natural disaster or war, fragile health systems are often pushed to a breaking point by increased demand for services. In unpredictable times like these, our **Medical Donation Program** is quick to collaborate with relief organizations on the ground, making our inventory of medicines and medical supplies available to first responders.

### Responding to the World's Largest Humanitarian Crisis



The civil war in Yemen has created the world's largest man-made humanitarian crisis, with 80% of the population in need of humanitarian assistance and

10 million people on the brink of starvation. The crumbling health infrastructure has unleashed the worst cholera outbreak ever recorded, with 1.49 million suspected cases.

In 2018, CMMB sent \$14.5 million of basic medicine and medical supplies to meet these great needs. Working with Rahma Relief Foundation and MedGlobal, our field partners, CMMB is committed to continuing its relief efforts at hospitals in Edan and Mukalla.

**Whether needed during an emergency or because of a common illness, medicine is fundamental to good health. We are grateful to our pharmaceutical partners and suppliers for their contributions of medicine and to our many individual donors, whose support enables us to deliver these lifesaving medicines across oceans, over dirt roads, and through jungles and deserts to treat those most in need. Thank you.**



Photo: Gareth Bentley

### 2018 Impact

- **\$598 million** worth of medicines and supplies distributed
- **34** countries received medicines and supplies
- **225** shipments sent



## 2018 Impact

- **289,867** people received access to clean water
- **5,320** benefited from sanitation and hygiene improvements
- **19** communities in South Sudan received repairs to water wells and water management training



## The Driving Force of Life

**W**ater is essential to life, yet 663 million people, nearly 10% of the world's population, live without access to clean water. Women and children suffer the most, and more than 340,000 children under five die annually from diarrheal diseases directly related to unsafe drinking water, among other causes.

**Our clean water initiatives** seek to address both the immediate and the long-term need for clean water and sanitation through borehole and hand pump restoration, rainwater harvesting, water purification devices, and hygiene education.

Decades of war destroyed most boreholes in South Sudan. Adequate subsurface water is available, but people cannot access it. CMMB has been repairing community boreholes and hand pumps and training local community water committees to maintain this vital resource. In 2018, we restored wells in 19 communities, which provided clean water to over 9,500 people.

### Clean Water for Communities

Kitui South is an impoverished, remote, and semi-arid area in Kenya and home of CMMB's **CHAMPS** program. Its severe shortage of clean water causes numerous health problems, including diarrhea among children, as families are forced to draw water from contaminated sources. As part of our clean water initiative, in partnership with Procter & Gamble, CMMB implemented a water purification project targeting **24** health facilities, **288** schools and **29,000** households. Distribution of water purification kits at these key areas of water consumption, along with training and hygiene education, increased access to clean water to **151,404** beneficiaries.



Photo: Clara Wetzel



## It Begins with Opportunity

**W**omen are the key to creating a prosperous society—that is why we keep them at the center of our work. When we invest in their health and well-being, they have the opportunities they need to succeed and thrive. And when mothers thrive, so do their children. Economically empowered women can feed their children, send them to school and seek quality healthcare when they are sick.

*When we invest in women, we can change the world.*

In addition to healthcare initiatives, our innovative **CHAMPS** program offers opportunities to women to enable them to lead more productive and fulfilling lives. Our **village saving and loans programs** in Peru, Haiti, Kenya, and Zambia support women with training and loans to plant gardens, raise livestock, and start small enterprises. In addition to generating income that allows women to support their families, the activities can help women achieve greater autonomy and improved self-esteem.

### A Life-Changing Investment



Five years ago, Pamela joined the village savings and loan association in the remote and impoverished Zambian town of Mwandi, where she lives with her husband and four children.

*“Look what I can do now! After saving with CMMB, I have a shop that brings money directly to me. I can feed my children and pay their school fees.”*

That decision transformed her. Today, in an area where too many women are dispirited and without hope, Pamela and the women of her savings group are filled with optimism for the future. This past year, Pamela built a small shop a short walk from home, a place where everyone in her community can come for basic supplies. Everything she earns, she invests back into the health and education of her children.



Photo: Clara Wetzel

### 2018 Impact

- **9,127** people participated in village savings and loan programs
- **Over 550** families received livestock or home gardens for income generation

# Volunteers: A Shared Purpose

“Love is shown more in deeds than in words.”

—St. Ignatius of Loyola

Our founder, Paluel Joseph Flagg, was a young doctor at St. Vincent's Hospital in New York City in 1912, when he tragically lost his wife and child. He channeled his tremendous grief into a lifelong mission to heal the poor and serve others. He first traveled to Haiti as a medical volunteer, and CMMB was born. Our **Volunteer Program** is the foundation on which CMMB was built. Today, our volunteers are serving around the world and are the best reflection of Dr. Flagg's vision.

Without your support, our **Volunteer Program** cannot exist. You share in our volunteers' compassion, commitment, and courage. Your kindness, generosity, care, and love allow us to have the greatest possible impact. Thank you for supporting our volunteers and honoring the legacy of our founder, Dr. Flagg, and all of our extraordinary volunteers.

## 2018 Impact

- 661 volunteers
- Working in 17 countries
- Totalling over 90,000 hours served



Dr. Tom Catena is our longest-serving medical volunteer. He has been part of our CMMB family since 1998. For the past decade, he has been the medical director and only permanent doctor at the Mother of Mercy Hospital in the war-torn Nuba region in Sudan, home to one million people.

Tom typically treats up to 500 patients in a day and is on call 24/7, delivering babies, performing surgeries, and treating traumatic injuries. He has saved the lives of more than 1,700 victims of war and countless others.

It is his faith that he leans on to get him through every day. **“I would not be here if it weren't for my faith. Every single day I experience moments where I feel like giving up. But my faith keeps me pushing ahead. Without it, I'd be lost.”**

Tom has been recognized for his exceptional courage and commitment to bringing lifesaving care to the most marginalized. He was named one of Time Magazine's 100 most influential people in 2015, and in 2017 he received the prestigious Aurora Prize for Awakening Humanity.

We are blessed to know him and we are inspired by his faith and dedication.

*“I just completed a surgery on a young woman. The operation succeeded only because of contributions. All the equipment in the operating room, the ultrasound machine that we used in diagnosing, all the drugs, all the supplies, even the training of our anesthetist in a very good school in Kenya, were because of donors. Most of these donors were unknown to me. They are certainly unknown to the patient. But it is because of their generosity that she lived through this day. And that's just one example from the past hour of how donors make our work possible.”*

—Tom Catena, MD, CMMB Volunteer  
Nuba Mountains, Sudan

# Our Supporters

“For it is in giving that we receive”  
—St. Francis of Assisi

Catholic Medical Mission Board is honored to acknowledge the exceptional support of our generous donors, whose steadfast support has sustained our lifesaving work.

Together in faith, we are advancing our shared mission and vision to provide quality healthcare to serve vulnerable women, children, and communities with love, dignity, and respect. We love what we do, but we can't do it without you. We are grateful for your compassion and sustained generosity. Mother Teresa said, “I see God in every human.” We see God in you.



**CMMB gratefully acknowledges the following generous individuals, corporations, and foundations, who supported our mission during FY2018, October 1, 2017, to September 30, 2018.**

## \$500,000+

Anonymous  
Mr. & Mrs. James M. Cornelius  
The Greater Cincinnati Foundation  
Mrs. Margaret Longto  
Procter & Gamble

Fidelity Charitable Gift Fund  
Mr. Desmond G. FitzGerald  
Food for the Poor, Inc.  
Hope for Poor Children Foundation  
Johnson & Johnson  
Loyola Foundation  
Mercy Health

Rev. Richard F. Maichen\*  
Merck & Co., Inc.  
Network for Good  
Mr. & Mrs. William Pasulka  
Presence Health  
Sisters of Charity of the Incarnate Word  
Rev. John B. Stawasz\*  
Mr. & Mrs. Matthew Styczynski  
The Catholic Foundation  
Trust of James Audino

Mr. & Mrs. Aloysius A. Leopold  
Ms. Janine Luke  
Mary C. Karl & John F. Karl Charitable Trust  
Mary Cross Tippmann Foundation  
Mrs. Madeline Migura  
Mr. Robert J. O'Shea  
O'Shea Family Foundation  
Ms. Mary F. Robek\*  
Mr. Nick J. Runnebohm  
Ms. Kathleen H. Templin

## \$250,000+

Mr. & Mrs. Patrick F. Adams  
African Mission Healthcare Foundation  
Bon Secours Health System  
GHR Foundation  
Sudan Relief Fund  
Mr. Richard W. Terrill\*  
Mr. John P. Wood\*

Sisters of the Sorrowful Mother Generalate  
Mr. & Mrs. James G. Stofer\*  
The Agnes Varis Charitable Trust  
Vanguard Charitable Endowment Program

## \$25,000+

Mr. Lamberto Andreotti  
Ms. A. Dorothy Arthur\*  
Catholic Health Services of Long Island  
Charles Schwab Charitable  
Cistercian Nuns  
Mr. Edward J. Giniat

The Reed Foundation  
Mr. Edward B. Timko\*  
United Therapeutics Corporation  
Mr. John Van Rens & Ms. Sarah Lutz  
Mr. Alexander J. Yerman

## \$100,000+

Bristol-Myers Squibb Foundation  
Ms. Marylane Burry  
Combined Federal Campaign  
Edmund Rice Foundation of Australia  
Mr. & Mrs. Eugene F. Fama  
Fidelis Care New York

**\$50,000+**  
Anonymous  
Mrs. Laura Audino  
Bank of America Charitable Gift Fund  
Ms. Camille Caliendo\*  
Chesapeake Charitable Foundation  
Michael A. Deck, M.D.  
Dr. & Mrs. John P. Hoying  
Charles A. Kiddy  
Mr. & Mrs. John J. Leahy

Goldman Sachs Philanthropy Fund  
JP Morgan Chase Bank, N.A.  
Quentin J. Kennedy Foundation  
Mr. Kenneth J. Kotas\*  
Mr. & Mrs. Keith Koval  
Mr. Donald R. Lachowicz

## \$10,000+

Adolph & Ruth Schnurmacher Foundation  
The American Gift Fund  
Mr. George Assie  
Mr. Paul Bates  
Benevity  
Mr. Thomas Bliznick

Ms. Joan Boyle  
J. Homer Butler Foundation  
Helene M. Calvet, M.D., & Mr. John Necarsulmer  
Mr. & Mrs. Nathaniel L. Carr  
Mr. Armando J. Caruso\*  
Mr. & Mrs. John E. Celentano  
Church of the Good Shepherd  
Mr. Eugene B. Ciechanowski\*  
Mr. & Mrs. Kenneth Clancy  
Mr. Michael D. Connelly  
Cornelius Family Foundation, Inc.  
Joseph J. Cutri, M.D.\*  
Mr. & Mrs. Nicholas D'Agostino, Jr.  
Damien-Dutton Society  
William C. Dowling, Jr., Foundation  
Mr. & Mrs. John R. Evans  
Mr. & Mrs. John T. Evans  
Mr. Ivan Fischer  
Mr. Paul F. Fischer  
Ms. Mary L. Flynn  
Mr. Richard Fratesi\*  
Ms. Elizabeth H. Fuller\*  
GE Foundation

Matching Gift Program  
Mr. & Mrs. Robert Gardner  
Mrs. Jane A. George  
Mr. & Mrs. George E. Gibert\*  
Giffuni Foundation  
Mr. & Mrs. Bernard J. Grimes  
Mr. David H. Grubb  
Mrs. Jane Guzikowski  
Dr. & Mrs. Alfred Hartmann  
Paypal Giving Fund  
Lt. Col. & Mrs. Joseph F. Hines  
Dr. & Mrs. Linus Ho  
Ms. Norma J. Idzinga\*  
Mr. & Mrs. Chris King  
KPMG  
Mr. Richard Kreitzberg  
Mr. & Mrs. Hilaire D. Lanaux J.C.L.  
Mr. Justin Largen  
Mr. Philip B. Laufer\*  
Love Meyer Family Foundation  
LPL Financial  
Mr. & Mrs. Patrick McCarthy

Mr. & Mrs. William A. McEachern  
The McGonigle Family Trust  
Mr. Kevin McGonigle  
Mr. & Mrs. Kieran J. McGrath  
Mr. Patrick D. McNelis  
Mr. & Mrs. Dale Meier  
Mr. & Mrs. John Meyer  
Ms. Adelaide C. Murphy\*  
Mr. Robert Navin  
Noster Foundation  
Mr. Robert Ochylski  
Ms. Margaret O'Connor  
Mr. Richard N. Paulsen  
Mr. Hank Raucchi & Mrs. Sandra Raucchi  
Mr. Henry P. Riordan, Esq.\*  
Mr. & Mrs. Michael J. Runnebohm  
Runnebohm Construction Co., Inc.  
Mr. & Mrs. David T. Rybak  
Mr. Matthew Schutzman  
Deacon & Mrs. John V. Sebastian

Mr. William Sheehan  
Mrs. Mary T. Sheppard  
Mr. Robert L. Sheppard\*  
St. Clare's Monastery  
Mr. Richard J. Statuto  
Mrs. Virginia Stea  
Ms. Frances Strachwitz  
Rev. James M. Sullivan  
Mr. & Mrs. Thomas Tebbens  
The Catherine M. Walsh Foundation  
The McDonald Family Foundation  
The Mushett Family Foundation  
The New York Community Trust  
TIAA  
Ms. Patricia L. Veit  
Mr. & Mrs. David Wagner  
Mr. & Mrs. Arthur Weingartner  
Mr. & Mrs. Thomas Williams  
Van Woeltz, M.D.  
YourCause, LLC

*“My first experience of motherhood is indescribable. The feeling of LOVE within me and the Lord is something that I would like other mothers, especially those living in remote areas, to experience, too.”*



Our Supporters (continued)

“I’ve been asking God to lead me to His desire. I have been praying to show me what my mission is in life. I know in my heart, God wants me to help children, since I don’t have a child of my own.”

**\$5,000+**  
Anonymous  
Mr. & Mrs. Tom Abate  
Ms. Theresa Adams  
American Endowment Foundation  
The Atlantic Philanthropies  
Mr. Paul Andrys  
Mr. Shiraz Balolia  
Mr. John J. Bart  
Mr. & Mrs. Luke Bartkiewicz  
Mr. Joseph Bass  
Mr. Fritz Baumgatner  
Mr. Don Beaudry  
Mr. Dean A. Beickelman  
Mr. & Mrs. Terry Bellgowan  
Mrs. Rose Belt  
Mr. Richard Bene  
Mr. Raymond J. Berardi  
Mr. & Mrs. Jacques Bergeron  
Ms. Victoria Beynon  
Mr. Robert Bieluczyk\*  
Mr. & Mrs. James Bogaski  
Mr. Kevin Bourque  
Mr. John Brennan  
& Mrs. Fran Brennan-Sullivan  
Dr. & Mrs. Leo R. Brown  
Mr. & Mrs. Dale E. Bryant  
Ms. Patricia Burns  
CA Inc. Matching Gift Program  
Mr. & Mrs. Brian Callahan  
Candlelight Storage LLC  
Mr. David L. Castaldi  
Mrs. Iris Castillo  
Mr. & Mrs. David Cheever  
Mr. Christopher Christenson  
Ms. Ella Cochrane\*  
Miss Patricia J. Connell  
Mr. Ernest E. Coqueran  
Mr. & Mrs. Clarence Darrow  
David A. Noyes & Company

Mr. Robert A. Davidson  
Mr. Donald T. Delamore  
Mr. & Mrs. Gregory M. DeSaye  
Mr. Timothy Dockman  
Mr. Jack Doyle  
Ms. Holly Dravitzki  
Mr. Scott Dunglinson  
Mr. & Mrs. Gregory P. Dunn  
Mr. Daniel R. Edgerton  
Estate of Frederick Olson  
Mr. Stephane H. Finkenbeiner  
Ms. Clare Francis  
Mr. Robert L. Freedman  
James Gabriel  
& Ellen R. Rosenthal  
Dr. & Mrs. James Gaudin  
Mrs. Michele A. Gentine  
Mr. Richard J. Gibbs, Sr.  
Nancy E. Gibbs M.D.  
Mr. Geoffrey Gilson  
Ms. Lenore R. Gleason  
Gleason Family Foundation  
Grey Nuns of the Sacred Heart  
Dr. Damian W. Grivetti  
Mr. Hubert Hamilton  
Ms. Mary Beth Hampson  
Ms. Marilou E. Hernandez  
Mr. & Mrs. Stephen Hiltibidal  
Mr. Jerome P. Hofmann  
Ms. Maureen Hollis  
Beth & Patricia Honan Fischer  
Ms. Elizabeth A. Horne  
Mr. & Mrs. John J. Hurley  
Mr. Thomas A. Hychalk  
Rev. Donald R. Imming  
Mrs. & Mr. Rita James  
Ms. Pauline Joyce  
Mrs. Margaret A. Jurgens  
Sr. Martha Juskewycz O.C.S.O.  
Mrs. Mary C. Karl\*

Rev. Anthony Kazarnowicz  
Ms. Debra Kellogg  
Rev. Charles F. Kelly  
Mr. Brian Kelly  
KLM Foundation  
Mr. Frederick W. Koehler, Jr.  
Mr. T. J. Kolar  
Miss Anna E. Kovaly\*  
Mrs. Eileen Kruzynski  
Mr. Raymond P. Kurkijy  
Joseph C. Langlois, M.D.  
Ms. Hye Y. Lee  
& Mr. Istvan Robel  
Mr. & Mrs. Drew Lelli  
Los Alamos National Laboratory  
Mrs. Carol H. Luders  
Mrs. Elise D. Lynch  
Ms. Linda C. March  
Mr. Michael Mastriano  
Mr. & Mrs. George A. Martin  
The Estate of Mary Eckstein\*  
Ms. Kathleen McCarthy  
Mr. & Mrs. Arthur J. McClelland  
Mrs. Mary A. McCoy\*  
Mr. & Mrs. Joseph McSweeny  
Mr. & Mrs. Kenneth J. Mello  
Mrs. Patricia M. Mierzejewski  
Milton & Fannie Brown  
Family Foundation  
Mrs. Luciya A. Miner  
Ms. Loretta Mitro  
Mr. Anthony G. Moleski  
Mr. & Mrs. Edward P. Molnar  
Mr. & Mrs. Joseph J. Moran  
Ms. Kathleen Murnion  
Ms. Patricia C. Murphy  
Ms. Anne M. Murphy  
Mr. Frank J. Neubauer  
Mr. Kenneth Nolan  
Mr. Jeffrey Nutting  
Dr. Udoh Obioha  
Ms. Hilary Olson  
Mrs. Carol Olson  
Mr. Terence O’Rourke Jr.  
Ms. Rosemarie Osborn  
Ms. Charlotte M. O’Toole  
Mr. Thomas J. Palumbo  
Paul Global Benefits

Mr. & Mrs. Allen E. Perrel  
Ms. Imelda P. Pluess  
Mr. John Queralt  
Mr. Leo M. Reid  
Mr. & Mrs. Edward B. Reilly  
Mr. & Mrs. John H. Rickman  
Rita M James  
Revocable Living Trust  
Mr. William Rose  
Mr. David P. Rost  
Mr. & Mrs. Kurt B. Rothe  
Mr. Martin Rubino  
Michael & Libby Runge  
Mr. Pedro Saavedra  
Ms. Diana Scheeler  
Mr. & Mrs. Roger Schinella  
Mr. Ronald Schwenkler  
Mr. James Sheridan  
Mrs. Elizabeth Simon  
Mrs. Eleanor M. Snyder  
Sonnet Software, Inc.  
Ms. Nikola Sponar  
Mrs. Alice D. Stehle  
Mr. John F. Stehle\*  
Mr. & Mrs. John Stiegelmeier  
Mr. Brett J. Stone  
Mr. Matthew P. Swit  
T Rowe Price Program for  
Charitable Giving  
Mr. & Mrs. Philip Tobin  
Mr. Tuan Trinh  
Mr. Matthew Ungs  
Mr. Thomas Van Thiel  
Ms. Jacqueline Vitulli  
Mr. Greg R. Wagner  
Ms. Mary C. Walker  
Wells Fargo Advisors  
Mr. Gerald Wilde  
Mr. & Mrs. Bruce Wilkinson  
Dr. & Mrs. Robert Williams  
Mr. John Wilson  
Michael J. Wolohan, M.D.  
Wolohan Family Foundation  
Mr. & Mrs. Ross Yates  
Ms. Patricia M. Young  
Mr. Werner J. Zumbrunn  
Mr. & Mrs. John Zurell  
Mr. & Mrs. Andrew Zych

**\$2,500+**  
Anonymous  
Mr. Benjamin F. Adams, Jr.\*  
Mr. Michael G. Allare  
Mr. & Mrs. Robert Almerini  
Mr. Jose F. Alvarez  
Mr. Joseph C. Amersbach  
Mrs. Salvatore Attard  
Ms. Gloria Avila  
Ms. Rose C. Azar  
Mr. George Balduf  
Mr. Tadeusz Barbusinski  
Mr. William B. Beck  
Ms. Eileen M. Beck  
Ms. Gladys Benton  
Mrs. Dorothy M. Berkowski  
Rev. Donald M. Berran  
Mrs. Mary Bognich  
Mr. James Bohan  
Mr. Robert Booms  
Mr. Stephen Botts  
Thomas Burns, M.D.  
Ms. Nancy Burt  
Mr. Bill Bushnell  
Mr. Thomas E. Byrne, Jr.  
Mr. Hector Castillo  
Mr. John Celani  
Mr. Eugene Chatelaine  
Mr. Robert Chavko  
Ms. Suzanne M. Cheesman  
Mr. & Mrs. Rick Chester  
Mr. Francis Claffey  
Community Foundation  
of the Ozarks  
Mr. Thomas S. Cooil  
Mr. Leonard D. Cool  
Ms. Joan M. Coss\*  
Mr. & Mrs. James Cote  
Mr. William Crane  
Elisabeth M. Crowley  
Mr. Geraldo E. Cunha  
Mr. & Mrs. Timothy Daly  
Ms. Cecilia Daly  
Daniel Lynch Foundation, Inc.  
Mr. Dennis J. Daugherty  
Mr. & Mrs. G. Berton Davis, Jr.  
Thomas DeBoise  
Mr. & Mrs. Edgar P. Devylder  
Diocese of Joliet  
Mr. & Mrs. Joseph F. Dols  
Mr. Michael J. Duffy  
Mr. Stanley Edwards

Eldon Community Foundation  
George Engeler, M.D.  
Mrs. Jacqueline B. Engelhart  
Ms. Nancy M. Evans  
Ms. Patricia Every  
Mr. Kenneth J. Fallender  
Mr. Joshua Farrar  
Dr. Robert J. Ferretti  
Mr. & Mrs. Leon J. Fiegel  
Mrs. Barbara Fink  
Mr. James Finley  
Ms. Patricia C. Finnegan  
Mrs. & Mr. Thomas Fitterer  
Dr. John J. Fitzgerald  
Mrs. Paschal Fitzgerald  
Mr. Thomas J. Fitzpatrick  
Mr. Eugene Flath  
Ms. Suzanne M. Fleming  
Mr. John C. Fleming  
Mr. Sam Fletcher  
Rev. Walter S. Florczyk  
Mr. Thomas P. Fontana  
Mr. & Mrs. John J. Freeh  
Ms. Mary Gallagher  
Mr. Henry P. Galmish  
Gene Gardner  
Dr. & Mrs. Robert A. Gasser, Jr.  
Mr. Joseph Gassib  
Mr. William J. Gilchrist  
Rev. Joseph M. Gile  
Mr. James Glinski  
Mr. & Mrs. Herve Goguely  
Mr. & Mrs. Harry E. Grant  
Greater Houston  
Community Foundation  
Mr. & Mrs. John Grivetti  
H.C.D. Foundation  
Mr. Stephen Habernig  
Ms. Violet M. Haelterman  
Rev. Donald F. Haggerty  
Karen & W. Stephen Hamlin  
Ms. Mary Ann Hanzel  
Mr. Frank Hayden  
Deacon & Mrs. Tom Hayward  
Ms. Carol Henrichs  
Mr. William M. Hicks  
Ms. Kathleen Higgins  
Mr. John Hilgenberg  
Mr. & Mrs. Joseph Hines  
Patricia & Robert Hirt  
Ms. Mary Hix  
Ms. Mary E. Hoffmann

Ms. Betsy J. Holland  
Hope for Haiti  
Mr. Vittorio Hosle  
Ms. Bonnie A. Hourigan  
Mr. & Mrs. Mark Huber  
Mr. Donald P. Hudok  
Mr. & Mrs. Paul A. Hummel  
Mr. & Mrs. George Hunter  
Ignatius Ohno Foundation  
J.P. Morgan Chase Foundation  
Miss Mary F. Jablonskis  
Mr. Wyn Jaccard  
Dr. & Mrs. William Keenan  
Mr. Philip Kenzora  
Ms. Mary G. Kernaghan  
Marshall Khant  
Ms. Sungmi Kim  
Mr. & Mrs. Michael Klein  
Mr. Peter L. Knapp  
Mr. Christopher P. Konrad  
Mr. Francis E. Kruml  
Mr. Michael Kuniak  
Mr. & Mrs. Walter M. Lacyk  
Mr. Herbert Lane  
Mr. John Larrinaga  
Mr. & Mrs. Chris Laursen  
Mr. Andrew M. Lee  
Ms. Kathleen M. Leonard  
Mr. Robert M. Lesmerises  
Mr. & Mrs. Lawrence A. Liddiard

Mr. Benjamin Locher  
Mr. Joseph M. Lomangino  
Mr. Theodore E. Lombard\*  
Mr. James M. Longville  
Ms. Mary Lubbers  
Mr. & Mrs. Alexander Lyczak, Jr.  
Mr. David Madden  
Marilyn & Daniel Maher  
Mr. Robert Maier  
Marks Paneth & Shron  
Mr. James J. Mason  
Mr. Richard Mattione  
Mrs. Ronald P. McArthur  
Mr. John McBride  
Mr. John T. McBryde  
Lawrence J. McCarthy, M.D.  
Brian & Jacqueline McCauley  
Michael F. McCormack, M.D.  
Miss Sarah McCoy  
Mr. & Mrs. Frank McCreesh  
Ms. Sandra McGinnis

“After my mission trip to Mwandia Mission Hospital, I saw how much they do with so little.”



# Our Supporters *(continued)*

*“I give in memory of my deceased wife and the gift she was to me and our 12 children.”*

- Thomas J. McIntee, M.D.

Rev. Hugh McManus

Medical Missionaries, Inc.

Mrs. Marie Meier

Merck Employee Giving Campaign

Ms. Jolynn Meza Wynkoop

Ms. Mary M. Middendorf

Mr. Leonardo Milano

Mr. Matthew Moffit

Dr. & Mrs. Matthew B. Monesmith

Ms. Mary Morgan

Mr. Robert E. Morris

Mr. Clark Muehlbronner

Mr. Robert W. Murphy

Mr. John Nack

Mr. George Nagy

Msgr. John Neff

Miss Rebecca Neuwirth

Mr. Matthew P. Nickson

Nightlight Foundation

Mr. William V. O'Connor

Mr. & Mrs. Tom O'Connor

Ms. Maureen O'Leary

Rev. Edward A. O'Melia

Mr. & Ms. Gerry Page

Dr. & Mrs. Arun A. Patil

Mr. Mike L. Pawlowski

Mr. & Mrs. Thomas R. Pendergast

Miss Mary C. Perkins\*

Mr. Conrad Person

Pikes Peak Community Foundation

Mr. David Pinter

Mrs. Mary Piowaty

Mr. Thomas W. Planek

Ms. Laura M. Pliska

Mr. & Mrs. Roger E. Podesta

Poor Clare Nuns

Mr. Manuel Porrez\*

Ms. Kathleen M. Potts

Mr. & Mrs. Michael Quigley
- Mr. & Mrs. Peter A. Quinn

Raymond James Charitable Endowment Fund

Ms. Karen Reabe

Mr. & Mrs. Arthur J. Ready

Mr. Anthony C. Reding

Rev. Thomas J. Reilly

Mr. James Reilly

Renaissance Charitable Foundation, Inc.

Deacon & Mrs. William A. Ritchie

Mr. Russell Robben

Mr. & Mrs. Boyd K. Roberts

Mr. James B. Robinson

Mrs. Martin M. Rockers

Mr. Gregg Ruppertsberger

Mr. William Ruth

Mr. John Saam

Mr. Nader Sabet

Ms. June M. Sambrowski

Mr. Andrew Sarofim

Ms. Fran Saul

Ms. Helen Schaefer

Mr. John Schafer

Mr. & Mrs. Kurt F. Schmidt

Mr. Warren A. Schneider

Ms. Karen K. Schulte

Mr. Fred Schulz

Rev. Donald P. Sheehan

Rev. Francis X. J. Smith

Mr. & Mrs. Wayne Snelson

Mr. & Mrs. Joseph L. Stankowski

Dr. Elin Stiegeler

Mr. Theodore Stone

Ms. Mary L. Strouse

Mr. Sungman Suh

Dr. & Mrs. Michael J. Sullivan

Mr. James M. Sullivan

Mr. Frank L. Sullivan, Jr.

Rev. Gary S. Sumpter

Mrs. Sophia Svelund

Mr. Joseph N. Swab



- Marianne Szawaluk
- Mr. & Mrs. Bernard Tansey
- Mr. & Mrs. Domenic J. Tarducci
- Dr. & Mrs. Atef M. Tawadros
- The U.S. Charitable Gift Trust
- Mr. Stephen Thomas
- Mr. & Mrs. Tommy Townsend
- Ms. Lynne C. Tuohy
- Dr. & Mrs. Barth Vander Els
- Ms. Aimee Villapando
- Mr. & Mrs. Frederic Watke
- Mr. & Mrs. Grivetti Watts
- Mr. & Mrs. Jeff Weber
- Mr. John Weber
- Dr. & Mrs. Joel T. Weigand
- Mr. & Mrs. William M. Wendell
- Mr. Jacob Wiechman
- Ms. Lia Wilson
- Mr. & Mrs. Thomas Young
- Mr. Joseph V. Zalner
- The Zalner Foundation
- Mr. Timothy Zelenak
- Mr. James P. Zimmerman

\* Denotes Deceased Donors

*“I cannot go overseas and be the hands of Jesus as others do. I do not have medical training as others do. But I do have the call, the invitation, to do what I can. CMMB allows me the great privilege of helping those who can make a difference.”*

# The Legacy Society

The Legacy Society recognizes those individuals who have provided for the long-term work of Catholic Medical Mission Board by making a planned or deferred gift. Their commitment, made during their lifetime, enables CMMB to plan for the future and meet long-term goals from a position of strength. Lifetime membership is bestowed on individuals who have enrolled in the Annuity Program or have named CMMB as a beneficiary of their will, trust, life insurance, or IRA.

## Annuity Members

The following individuals opened a charitable gift annuity with CMMB, providing the annuitant with a guaranteed income for life and the knowledge that they have made a meaningful gift that will benefit women and children in years to come.

- Mrs. Margaret F. Agnew

Mrs. Alberta Attanasio

Ms. Beatrice Barrera

Miss Stella Bejnarowicz

Mr. Dennis L. Beshara

Ms. Cecilia A. Braam

Ms. Josephine Brienza

Mr. Edward Briody

Mr. Walter J. Broscius

Ms. Hildegard B. Buel

Ms. Mary E. Burke Nash

Ms. Geraldine F. Burton

Mr. Thomas E. Byrne, Jr.

Dr. Mary D. Cancellare

Mrs. Iris Castillo

Ms. M. Jeanne Cayo

Dr. Jessalyne L. Charles

Ms. Janet T. Christopher

Miss Irene T. Constantine
- Mr. Robert R. Daquin

Rev. Stephen Deaver

Miss Dorothy M. Desmond

Mrs. Carmela M. Di Spigno

Miss Patricia K. DiComo

Mrs. Rita M. Dinges

Mr. & Mrs. Joseph E. Dispigno

Mrs. Mary Lou Dobihal

Ms. Gloria Duday

Mrs. Joyce J. Dumas

Mrs. Lynda Eckes

Dr. Barbara J. Fleischer

Miss Mary J. Foster

Ms. Grace M. Frey

Mr. Paul Gagnon

Ms. Joann Gavitt

Mr. & Mrs. Donald R. Giasson

Mr. & Mrs. Harry Grant

Ms. Geraldine C. Guggemos
- Ms. Martha R. Hacala

Ms. Anna M. Hafeli

Mrs. Dorothy J. Heberlein

Mr. John D. Herrick

Mrs. Catherine Horn

Mr. Leo J. Iannuzzi

Rev. Donald R. Imming

Rev. Thomas P. Ivory

Rev. Arthur J. Jakobiak

Dr. William J. James

Mr. Joshua Jasso

Mrs. Margaret A. Jurgens

Mrs. Cecilia V. Kallay

Mr. Charles Kiddy

Mr. Robert K. Krause

Mrs. Mabel I. Lane

Ms. Josephine G. Laux

Mr. John Leinenweber

Mr. & Mrs. John A. Lomurno

Mrs. Marguerite M. Luckhowec

Mr. Francis J. Mahoney, Jr.

Mr. & Mrs. George A. Martin

Mr. Michael Mastriano

Mr. & Mrs. E James. McTighe

Cdr Florence C. Mcdonald Ret USN

Mrs. Anita M. McDonough

Mr. Thomas M. McDonough

Mrs. Cecilia McShea

Mr. Francis Meekin

Ms. Elizabeth F. Miller

Mr. Joseph R. Mitosinka

Msgr. Frederick J. Murphy

Mrs. Corry S. Nethery

Rev. John J. Newell

Mr. Ronald R. Oberle

Ms. Kathleen A. O'Connor

Ms. Teresa M. Ontra

Mr. & Mrs. Joseph J. Pello

Mrs. Donna J. Phoenix

Mrs. Viola Piscatelli

Mr. & Mrs. Norbert Pittner

Mrs. Gloria D. Plog
- Mrs. Susan Porter Robinson

Mrs. Estelle M. Postel

Mrs. Mary C. Powers

Mrs. Huay-Min Pu

Mr. Robert G. Pumford

Mrs. Katherine D. Quigley

Mr. & Mrs. Thomas Quinlan

Ms. Rosemary Rea

Mr. & Mrs. James E. Reilly

Ms. Karen Riedl

Mrs. Judy N. Riggs

Mr. & Mrs. Kenneth Rizzuto

Miss Frances A. Romeo

Ms. Angela P. Rosania

Mrs. Rita Rose

Rev. Robert C. Rosing

Mr. & Mrs. Ronald C. Rossi

Mr. David P. Rost

Dr. & Mrs. Donald C. Salzano

Miss Angelita S. Santos

Mr. William Schlegel

Ms. Joan E. Schmitz

Ms. Karen K. Schulte

Mr. Richard L. Schwaller

Mr. Thomas P. Sheridan

Mrs. Marion R. Smith

Miss Helen P. Stegun

Mr. Edward C. Tarte

Mr. & Mrs. James Trowbridge

Miss Lillian M. Tupac

Miss Norma Ulivo

Ms. Frances M. Vincent

Rev. Richard F. Wagner

Mr. & Mrs. David Wagner

Msgr. James E. Wall

Mr. & Mrs. Gerard A. Weigel

Yvonne White

Mr & Mrs. Paul Wilson

Miss Gwendolyn Worrell

Ms. Felice Zaldokas

Mr. Andrew Zeko

Mr. & Mrs. George E. Zenie

Mr. Benjamin F. Adams Jr.

# Our Supporters *(continued)*

### Planned Gift Members

The following individuals have named CMMB as a direct or residuary beneficiary in their will, trust, or other estate plans.

Mr. Eric D. Aanestad  
Edward Albertone Trust  
Ms. Mary Anderson  
Mr. Blaise C. Barrios  
Ms. Rita Becker  
Ms. Carolyn M. Bednarek  
Mr. Raymond J. Berardi  
Mrs. Virginia B. Birge  
Mr. Robert V. Bledsoe  
Victor A. Blenkle Trust  
Miss Harriet Bly  
Miss Margaret Brosnan  
Mrs. Patricia L. Burgmyer  
Ms. Mary Burke  
Ms. Marylane Burry  
Mr. Joseph F. Callahan  
Mr. Joseph Cantelli  
Ms. Anne G. Chipetta

Mr. Thomas S. Cooil  
Ms. Josephine M. Cormack  
Rev. Allen F. Corrigan  
Ms. Joyce Costello  
Ms. Margaret J. Cummings  
Ms. Barbara H. Cunningham  
Mr. Patrick J. Delmore  
Mr. Michael G. Devine  
Ms. Margaret Drury  
Miss Mary J. Drury  
Mr. Denis D. Durnan  
Mr. Jim Duszak  
Mrs. Mary Ann C. Earles  
Mr. Charles J. Erpenbeck  
Miss Cynthia Felch  
Mr. Daniel J. Fennell  
Mr. William Forno  
Miss Mary J. Foster

Ms. Clare Francis  
Ms. Grace M. Frey  
Ms. Jane Fuegner  
Mr. Peter J. Galligan  
Rod & Ita Gillis  
Mr. Donald J. Glaser, A.S.I.D.  
Ms. MaryAnn Gleeson  
Ms. Eleanor Glock  
Miss Catherine Goebel  
Mr. P. Vincent Grado  
Mrs. Mary Harbour  
Mr. Robert R. Hawkins  
Mr. Wayne J. Hemmen  
Ms. Margaret M. Hoffman  
Mrs. Suzann C. Horn  
Mr. Joseph Hovnanian  
Dr. William J. James  
Mr. Don Jank  
Mr. Michael Jenkins  
Mr. David S. Kamide  
Ms. Joanne Kenny  
Ms. Carol M. Kerler  
Mrs. Kathleen P. Kinahan  
Mrs. Mary P. Kluck  
Mrs. Marilyn Knor  
Mr. David J. Koch  
Mr. Greg Konrad  
Mr. Charles Kronenwetter  
Mr. David O. Lee  
Mr. David Lee  
Ms. Suzanne Lee  
Mr. Robert M. Lesmerises  
Mrs. Margaret Longto  
Mrs. Carol H. Luders  
Rev. Eamon Mackin  
Mr. T. J. Maguire  
Mrs. Claudine A. Marcoux  
Mrs. Kathleen O. Martin  
Mr. Dave F. McBride  
Ms. Mary McConihe  
Mrs. Ann F. McHugh  
Ms. Virginia McLaughlin  
Mr. Donald R. Messina  
Miss Gertrude Meyer  
Ms. Jeanne E. Micheleni  
Mrs. Mary L. Mihm  
Father Michael Moon  
Mr. John P. Moran

Miss Barbara A. Moroson  
Mrs. Patricia Morrissey  
Mr. Richard J. Murray  
Mrs. Mary E. Nolan  
Brian W. Norkett  
Estate of Angeline Normand  
Mr. William Nugent  
Rev. Msgr. Timothy O'Connell  
Rev. Jeremiah O'Shea  
Mr. Donald W. Ottens  
Jon M. Owings, M.D.  
Mr. Richard H. Pelkey  
Mrs. Mary Ann Pezzullo  
Miss Therese F. Pick  
Mrs. Viola Piscatelli  
Mrs. Susan Porter Robinson  
Mr. Lozelle L. Pratt  
Mrs. Teresa F. Przybylski  
Ms. Mary Putschi  
Mrs. Nuala M. Quill  
Miss Geraldine Rehill  
Ms. Elizabeth M. Rice  
Ms. Mary Ann Richter  
Mr. James P. Ryan  
Mr. Laurence Schlegel  
Mr. Paul Schullian  
Mr. D. R. Schultze  
Mr. William Simpson  
Ms. Virginia Smith  
Mr. Jim Sponsler  
Mr. Charles Steer  
Mr. George A. Stefani  
Ms. Kathleen Stegeman  
Mrs. Mary E. Stewart  
Mr. Daniel Sweet  
Mrs. Anne D. Taylor  
Ms. June L. Temple  
Mr. Harold J. Thalheimer  
Mr. Kyle S. Thibodo  
Ms. Rita F. Tobin  
Mr. Richard B. Trefny  
Ms. Billie F. Vance  
Mrs. Florence A. Walsh  
Mr. Francis M. Whitesell  
Rev. M. R. Yosso  
Ms. Patricia A. Zeimis  
Mr. Stanley M. Ziemnicki

### Bequest Members

The following individuals are posthumously enrolled into the Legacy Society for having provided CMMB with a gift from their estate in 2018. We are indebted to their generosity and remember them in our prayers.

Ms. A. Dorothy Arthur  
Mr. James E. Audino  
Mr. Robert Bieluczyk  
Ms. Camille Caliendo  
Mr. Armando J. Caruso  
Miss Helen F. Chetner  
Mr. Eugene B. Ciechanowski  
Ms. Joan M. Coss  
Mr. George E. Gibert  
Ms. Norma J. Idzinga  
Ms. Dorothy E. Kent  
Mrs. Mary M. Koch  
Mr. Kenneth J. Kotas  
Miss Anna E. Kovaly  
Mr. Walter L. Lalor  
Ms. Dolores Layko McCarthy  
Miss Pauline Lisse  
Mr. William R. Loichot

Mr. Theodore E. Lombard  
Mr. Charles J. Lowery  
Rev. Richard F. Maichen  
Mary Eckstein  
Mr. Frank Masiello  
Mrs. Mary H. Mulholland  
Ms. Adelaide C. Murphy  
Mr. John J. Neumayer  
Miss Mary C. Perkins  
Mr. Manuel Porrez  
Mr. Michael Rinaldi, Jr.  
Ms. Catherine A. Rogers  
Mr. William C. Schmitt  
Ms. Frances S. Schueler  
Rev. John B. Stawasz  
Mr. Richard W. Terrill  
Mr. Edward B. Timko  
Mr. John P. Wood



*“Of the many charities Dad supported, he had a favorite—CMMB—which he described to us as ‘one of the finest charitable organizations in the world.’ Now Dad’s legacy of helping ‘the least of these’ (Mathew 25:35-40) lives on.”*



# Institutional Partners

CMMB gratefully acknowledges the governments, multilateral and bilateral agencies, corporations, foundations, and organizations that support our work.

### Multilateral and Bilateral Agencies

Centers for Disease Control and Prevention  
The Global Fund to Fight AIDS, Tuberculosis and Malaria  
PEPFAR  
United Nations Development Programme  
UNICEF  
United Nations High Commissioner for Refugees  
U.S. Department of State/Office of the Global AIDS Coordinator  
U.S. Agency for International Development  
World Food Programme

### Corporations

Bank of America Charitable Gift Fund  
Bristol-Myers Squibb Foundation  
CA Inc. Matching Gift Program  
Candlelight Storage LLC  
Charles Schwab Charitable  
Fidelity Charitable Gift Fund  
GE Foundation Matching Gift Program  
Goldman Sachs Philanthropy Fund  
John Snow, Inc.  
Johnson & Johnson  
JP Morgan Chase Bank, N.A.  
KPMG  
Los Alamos National Laboratory  
LPL Financial  
Merck & Co., Inc  
Paul Global Benefits  
Paypal Giving Fund  
Procter & Gamble

Runnebohm Construction Co., Inc.  
Sonnet Software, Inc.  
TIAA  
T Rowe Price Program For Charitable Giving  
United Therapeutics Corporation  
UnitedHealth Group  
The U.S. Charitable Gift Trust  
Vanguard Charitable Endowment Program  
Wells Fargo Advisors

### Foundations

Adolph & Ruth Schnurmacher Foundation  
African Mission Healthcare Foundation  
American Endowment Foundation  
The Atlantic Philanthropies  
Aurora Humanitarian Initiative Foundation  
Caris Foundation  
The Catholic Foundation  
Chesapeake Charitable Foundation  
Cornelius Family Foundation, Inc.  
William C. Dowling, Jr., Foundation  
Edmund Rice Foundation of Australia  
GHR Foundation  
Giffuni Foundation  
The Greater Cincinnati Foundation  
Hope for Poor Children Foundation  
J. Homer Butler Foundation  
KLM Foundation  
Love Meyer Family Foundation  
Loyola Foundation  
Mary Cross Tippmann Foundation  
The McDonald Family Foundation  
Milton & Fannie Brown Family Foundation

The Mushett Family Foundation  
The New York Community Trust  
Noster Foundation  
O'Shea Family Foundation  
Quentin J. Kennedy Foundation  
Raskob Foundation for Catholic Activities  
Roncalli Foundation  
The Catherine M. Walsh Foundation

### Organizations

The Agnes Varis Charitable Trust  
Amref Health Africa  
The American Gift Fund  
Benevity  
Bon Secours Health System  
Catholic Health Services of Long Island  
Church of the Good Shepherd  
Cistercian Nuns  
Combined Federal Campaign  
Damien-Dutton Society  
Fidelis Care New York  
Food for the Poor, Inc.  
Grey Nuns of the Sacred Heart  
Kenya Red Cross Society  
The McGonigle Family Trust  
Mercy Health  
Network for Good  
Pact, Inc.  
Presence Health  
Sisters of Charity of the Incarnate Word  
Sisters of the Sorrowful Mother Generalate  
St. Catherine's University  
Sudan Relief Fund

# Thank You for Making a Difference

*“Each one must give as he has decided in his heart, not reluctantly or under compulsion, for God loves a cheerful giver.” —2 Corinthians 9:7*

Firm in our faith, Catholic Medical Mission Board has been providing quality healthcare and dignity to the poor for more than a century. CMMB’s core values of love, collaboration, excellence, and respect have stood the test of time, and we’ve grown into a global, faith-based, humanitarian organization, thanks to your steadfast generosity and compassion.

As we carry out our shared mission to serve vulnerable women, children, and families in need, we hope you will continue to partner with us.



## How Can You Continue to Help Advance Our Shared Mission?

**Give** – Your tax-deductible gift to CMMB will enable us to continue to deliver sustainable, impactful healthcare programs and services and essential medicines and supplies to the most vulnerable among us.

## Support Our Mission in Other Ways

**Join the Legacy Society** – By naming Catholic Medical Mission Board in your will or as a beneficiary of your life insurance policy or remaining IRA funds, your legacy of compassion and generosity will live on for millions of children and families around the world.

**IRA Distribution** – Supporters who are 70½ years or older can make a distribution from your IRA to CMMB for up to \$100,000 without reporting the withdrawal as taxable income.

**Gifts of Securities** – You may avoid capital gains tax on securities held long-term and provide a tax deduction equal to the fair market value at the date of transfer.

**Donor Advised Funds** – Donor advised funds are an increasingly popular way to support CMMB with funds you have already set aside for charitable purposes. Please consider making a grant to CMMB through our DAF Direct portal by going to [cmmb.org/DAF](http://cmmb.org/DAF).

**Matching Gifts** – You can double the impact of your gift if you or your spouse work for a company with a matching gift program.

*Please contact our Partnerships Team directly at 212-609-2597 if you have any questions or need assistance in making your donation to CMMB.*

**Volunteer Opportunities** – Are you interested in volunteering for CMMB? To learn more, please contact us at [volunteer@cmmb.org](mailto:volunteer@cmmb.org).

## Gifts in Kind

CMMB is grateful to the following donors for their generous in-kind and pro bono support of our mission.

Mylan	Johnson & Johnson	BD	Pfizer Inc.
Accord Healthcare, Inc.	Restoring Vision	Henry Schein, Inc.	medi for help
Apotex, Inc.	BioComp Pharma Inc.	Mission Pharmacal Company	St. Joseph Hospital
Eli Lilly & Co.	Integra LifeSciences	Bon Secours Health System	Unipharm, Inc.
Merck & Co., Inc.	Carlsbad Technology, Inc.	Bloomberg	Mercy Health

*CMMB thanks all our generous supporters and gratefully acknowledges your contributions. Our sincere apologies to anyone whose name was inadvertently omitted from this list.*

## Stay in Touch

Catholic Medical Mission Board  
100 Wall Street, Floor 9, New York, New York 10005, 800-678-5659  
Visit [www.cmmb.org](http://www.cmmb.org) and sign up for our newsletter or our Sunday Weekly Reflections



# CMMB Leadership

## Board of Directors

### Officers

<b>Chair: Rosemary Moynihan, S.C., Ph.D.</b> <i>General Superior, Sisters of Charity of Saint Elizabeth</i>	<b>Treasurer: Richard J. Statuto, M.B.A.</b> <i>President and CEO, Bon Secours</i>
<b>Vice Chair: Nicholas D'Agostino, III</b> <i>Chairman and CEO, D'Agostino Supermarkets</i>	<b>Secretary: N. Regina Rabinovich, M.D., M.P.H.</b> <i>ExxonMobil Scholar in Residence, Harvard TH Chan School of Public Health at Harvard University</i>

### Members

<b>John M. Starcher, Jr., J.D.</b> <i>President and CEO, Mercy Health</i>	<b>Edward J. Giniat, C.P.A.</b> <i>Partner, KPMG</i>
<b>Matt Malone, S.J., M.A.</b> <i>President and Editor in Chief, America Magazine</i>	<b>Desmond G. FitzGerald</b> <i>President, Hope for Poor Children Foundation</i>
<b>Conrad Person</b> <i>Retired Director, Johnson &amp; Johnson, Charitable Giving Fund</i>	<b>Maria R. Robinson, M.D., M.B.A.</b> <i>Dermatologist and Dermatopathologist, the Raskob Foundation for Catholic Activities</i>
<b>Robert E. Robotti, M.B.A.</b> <i>Principal, Robotti &amp; Company, LLC</i>	<b>Antoine Ezell, M.B.A.</b> <i>Vice President, Connected Care and Insulin, Eli Lilly and Company</i>
<b>Katherine A. Taylor, M.Sc., Ph.D.</b> <i>Director of Global Health Training, Eck Institute for Global Health, University of Notre Dame</i>	<b>Carol Zinn, S.S.J., M.Th., Ph.D.</b> <i>Executive Director, Leadership Conference of Women Religious</i>
<b>Patrick William Kelley, M.D., Dr.P.H.</b> <i>Distinguished Fellow in Nursing and Health Studies, Marion Peckham Egan School of Nursing and Health Studies, Fairfield University</i>	<b>John E. Celentano, M.B.A.</b> <i>Senior Advisor in the Life Sciences Industry Managing Director, J Celentano Advisory Services LLC</i>
<b>Michael P. Hilbert, S.J., J.C.D.</b> <i>Associate Pastor, St. Ignatius Loyola Parish New York</i>	<b>Jeanmarie C. Grisi</b> <i>Chief Investment Officer, Pension Investments, Nokia</i>

### CMMB Executive Team

<b>Bruce Wilkinson, M.B.A.</b> <i>President and CEO</i>
<b>Michael O'Hara</b> <i>Chief Financial Officer</i>
<b>Dick Day</b> <i>Senior Vice President, Programs and Volunteers</i>
<b>Meseret Ansebo</b> <i>Vice President, Human Resources</i>
<b>Peggy O'Neill</b> <i>Vice President, Partnerships</i>
<b>John Mix</b> <i>Vice President, Marketing and Communications</i>

### CMMB Country Directors

<b>Ariel Frisancho, M.D.</b> <i>Country Director, Peru</i>
<b>Dianne Jean-François, M.D., M.P.H.</b> <i>Country Director, Haiti</i>
<b>James Kisia, M.D.</b> <i>Country Director, Kenya</i>
<b>John Perry</b> <i>Country Director, South Sudan</i>
<b>Batuke Walusiku-Mwewa, M.Sc.</b> <i>Country Director, Zambia</i>

# Financials

## Stewardship in Fiscal Year 2018, in US Dollars

<b>Donated Goods &amp; Services</b>	<b>\$ 709,138,836</b>
Pharmaceuticals and Medical Supplies	703,685,270
Medical Volunteers Program	5,453,566
<b>Contributions &amp; Other Revenue</b>	<b>\$ 30,943,449</b>
Government	10,757,700
Individuals	15,398,628
Corporations, Foundations and Organizations	3,422,799
Trust and Estates	1,347,510
Other	16,812

**TOTAL SUPPORT THROUGH SEPTEMBER 30, 2018** **\$ 740,082,285**

<b>Program Services Expenses</b>	<b>\$ 625,653,193</b>
Pharmaceuticals and Medical Supplies	599,452,903*
Medical Volunteers Program	5,937,856
Support for Health Projects	20,262,434

<b>Supporting Services Expenses</b>	<b>\$ 10,421,375</b>
Fundraising	5,481,853
Administration	4,939,522

**TOTAL EXPENSES THROUGH SEPTEMBER 30, 2018** **\$ 636,074,568**

\* Excludes \$109 million of pharmaceuticals and medical supplies received in September 2018 that will be distributed in fiscal year 2019.



CMMB Rated  
Four Stars,  
Eight Years in a Row



Meets Better  
Business Bureau's  
20 Standards for  
Charity Accountability



# And It Continues With You



**cmmb**

Healthier Lives Worldwide

**Catholic Medical Mission Board**

100 Wall Street, Floor 9, New York, New York 10005, 800-678-5659