



**Standing Together Over Time**  
2019 Annual Report





## Dear Friends,

Jesus urged us to live His way through love of God, love of neighbor, and love of self. He did this patiently and wholeheartedly to his death. St. Paul further explained that “Love never gives up . . . cares more for others than for self . . . trusts in God always . . . never looks back but keeps going . . . it never dies.” Much later, St. Vincent de Paul taught that “love is inventive unto infinity.”

We are present to the people we serve. Our faith and shared commitment to mission calls us to walk with people over time—empowering them, educating them, and loving them into wholeness. Love is the way. It is inventive unto infinity. It never fails.

For over a century, Catholic Medical Mission Board (CMMB) has been committed to the mission of love, continually seeking to bring about healthy change in the lives of those most vulnerable, particularly women, children, and communities. This mission of love takes time and persistence to enable people to become healthy, to grow, and to develop personally and in community. This is no easy task. It requires strong local and global partners, generous supporters, staff, volunteers, and the communities themselves. All play an essential role to help bring about health, wholeness, and hope. It also requires new, innovative programming for the mission to be effective and sustainable.

Through collaborative programs like CHAMPS (Children and Mothers Partnerships), resources are shared among individuals, families, and communities; capacity is increased by community health workers, and bridges are built between communities and healthcare. Most of all, a long-term, lasting commitment is needed from all of us who are willing to stand together over time to ensure the effectiveness and sustainability of our work.

Please take the time to read CMMB’s 2019 Annual Report. We are grateful for your trust and companionship on this journey and for your partnership in Jesus’s mission of love. Thank you again for your generous support and for responding to God’s grace in your life by loving others.

Many blessings,

*Sister Rosemary Moynihan*

Sister Rosemary Moynihan, SC  
Board Chair  
CMMB

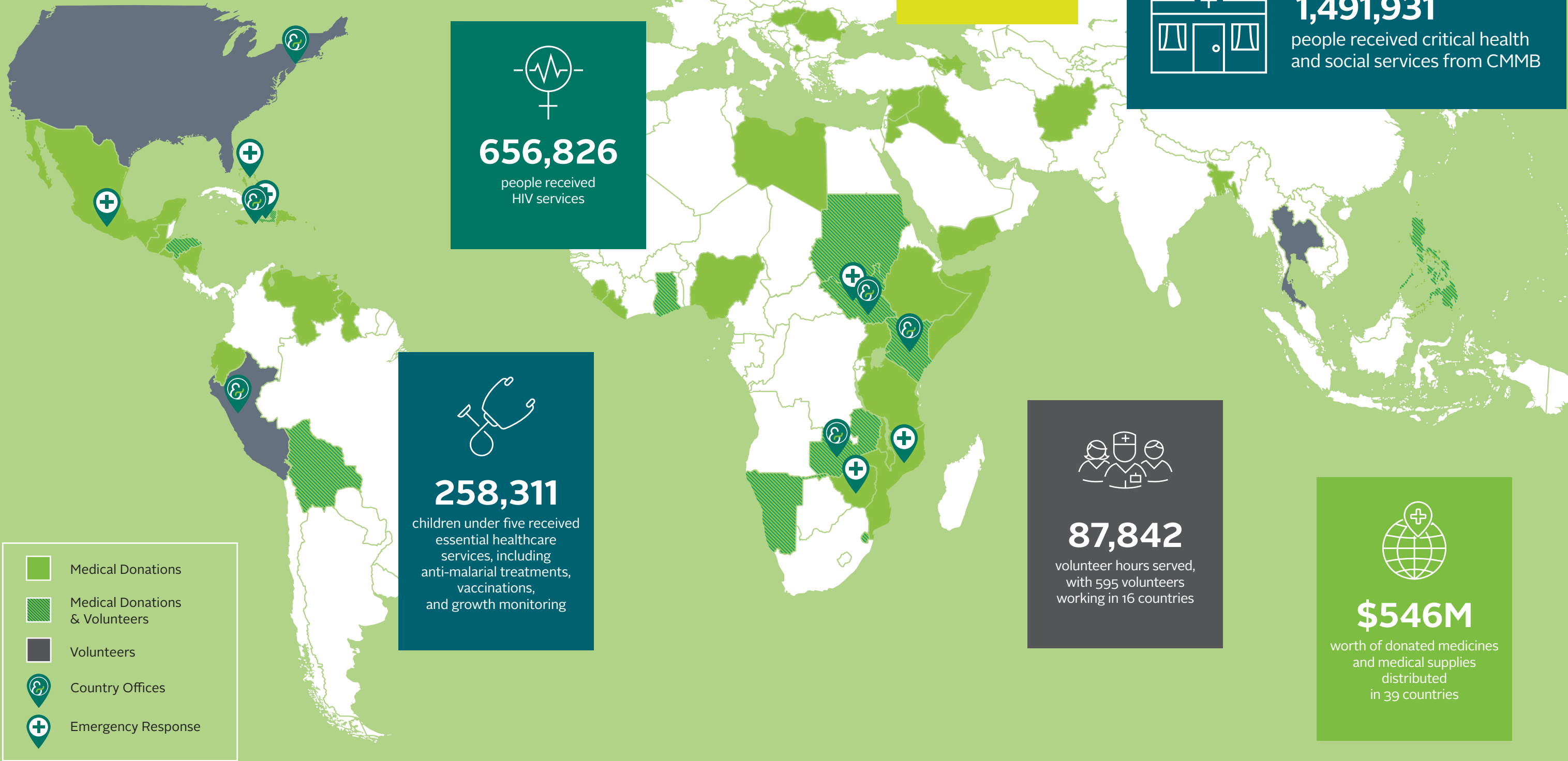
*Bruce Wilkinson*

Bruce Wilkinson  
President & CEO  
CMMB



# The Big Picture in 2019—Thanks To You

For over a century, CMMB has worked globally to improve the health and well-being of people living on the margins of society and to alleviate their suffering. Inspired by the generosity of many, we work in partnership with local communities, governments, volunteers, and other relief organizations to implement sustainable solutions to improve the health of women and children, strengthen local health systems and respond to global emergencies.







## OUR MISSION

Inspired by the example of Jesus, CMMB works in partnership globally to deliver locally sustainable, quality health solutions to women, children, and their communities.

## “When others left, you stayed.”

The early years for Eduardo Hiiboro Kussala, bishop of South Sudan’s Diocese of Tombura-Yambio, were fraught with violence. His mother was killed during the Sudanese civil war, and he spent years in a refugee camp. These experiences shaped him as one of the most ardent advocates for peace in his war-torn nation.

CMMB made a long-term commitment to share this fragile nation’s journey toward recovery. Bishop Eduardo has been an inspiration and one of our most trusted partners in this work. He reflected on the importance of our partnership during a recent visit to our New York offices:



“For the past ten years CMMB has worked with us to rebuild our health-care facilities, improve health services for mothers and children, restore clean water to our communities, and rehabilitate our children and families torn apart by war.

“Your presence here, with us, is so very important to us. It is changing lives. Often it was dangerous to travel on these roads, and at times all we could do was pray together, but when others left, CMMB stayed. You never abandoned us. This is a gift better than any other we could ever hope for.

“I am asked, ‘Does our support help?’ I wish you could see what I see, and you would know the answer is yes. I am grateful to all who support us. But, please, I ask you to get closer still and give us the skills so that we can build a society that is peaceful and can take care of everybody.

“May God bless you for making a commitment to the people of South Sudan and for the tremendous impact you have had on the lives of the women, children, and families here.”

Solidarity is “a firm and persevering determination to commit oneself to the common good; that is to say, to the good of all and of each individual, because we are all really responsible for all, because compassion flows from fraternity.”

—Pope Francis, World Day of Peace 2016



# CHAMPS—Committed to the Long Term

“When women are empowered and can claim their rights and access to land, leadership, opportunities, and choices, economies grow, food security is enhanced, and prospects are improved for current and future generations.”

—Michelle Bachelet, Former Under-Secretary-General and Executive Director of UN Women



Throughout history, the role of women in society has ensured the stability, progress, and long-term development of nations. Women are the educators, caretakers, farmers, and entrepreneurs of their communities.

Yet women and children are disproportionately affected by poverty. Marginalized and vulnerable, they do not have choices or options, and many do not even have access to healthcare. CMMB is committed to removing the barriers that prevent women from fully realizing their role as agents of change in their families and communities.

Strong health facilities and a better-informed citizenry are essential to long-term sustainable change.

This kind of systemic change is challenging and takes time. Thanks to you, through our Children and Mothers Partnerships (CHAMPS), CMMB has made long-term commitments to communities to work alongside women in their communities to provide comprehensive programs that address the root causes that restrict women and children from living healthier lives.

Together, we are committed to increasing access to essential health services, providing clean water to communities, eliminating malnutrition, strengthening local health facilities, and empowering local communities.

At health facilities, CMMB focuses on ensuring that hospitals and clinics are properly equipped and that health workers are trained to meet the needs of pregnant women and young children. In the community, community health workers monitor the health of at-risk families and provide timely linkages to clean water, nutrition, and health facilities.



## OUR VISION

A world in which every human life is valued, and health and human dignity are shared by all.





## IMPACT 2019

- **82,460** pregnant women received antenatal care
- **16,322** women gave birth at a health facility with a skilled birth attendant
- **31,579** women received postnatal care



STANDING TOGETHER OVER TIME

## Maternal and Newborn Care

We are committed to . . . ensuring that women have access to comprehensive, timely, and effective maternal care.

We spoke with Jeanne Louise during her first postnatal visit to Bishop Joseph M. Sullivan Center for Health (BJSH) in Côtes-de-Fer, Haiti. She and her grandmother had walked for nearly seven hours along a rough road of loose stone and scattered boulders to reach the facility. They took turns carrying baby Anne Flore. That kind of effort to reach the BJSH shows just how much its services mean to families.



When Jeanne Louise first found out she was pregnant, her grandmother remembers telling her, “We are going to the new hospital because they treat people well, with care and kindness.” Months later, when her labor started, Jeanne Louise made her way to the hospital. After 24 hours in labor without any progress and with signs that the baby was in distress, Dr. Jean Daniel Laguerre explained that Jeanne Louise would need a C-section. Although she was not afraid, her mother and grandmother were. “No one in our entire family has ever had a surgery of any kind before. We were very afraid when Jeanne Louise went in for the

C-section. We know that baby Anne Flore is alive today because of the hospital’s care.”

When the BJSH opened its doors in 2017 as the cornerstone of our CHAMPS program, it gave the residents of nearby communities an opportunity they never had before: access to modern healthcare, with doctors, nurses, skilled health providers working in clean and properly equipped surroundings. Trust was built, particularly among pregnant women, who began to travel great distances to the hospital. Word spread of the care that women were receiving, and the hospital provided 506 safe deliveries in 2019.

A key focus of our CHAMPS is ensuring that local health facilities are appropriately equipped and staffed and that they provide health services essential to pregnant women and young children.





# Children's Health

We are committed to . . . ensuring that children are protected from and treated for malnutrition.



Two-year-old Dominic was always tired, and his mother, Mariena, was concerned about her first child's lack of focus. But as a first-time mom, she was not sure anything was wrong.

Silvia Mejia, a veteran CMMB community health worker, suspected otherwise. During a home visit to check up on Mariena and Dominic, she referred Dominic for a blood test that confirmed he was suffering from iron deficiency anemia.

Childhood anemia is a silent manifestation of chronic malnutrition and the world's most widespread nutritional disorder. In rural Peru, nearly 50% of children age three and younger suffer from iron deficiency anemia. Anemia in pregnant women and young children is particularly dangerous and can result in lifelong cognitive deficiencies.

Dominic was given a series of iron supplements to boost his red blood count, and Mariena received nutrition counseling from Silvia. Mariena also participated in group food preparation classes, where she learned what local foods were high in protein and iron and how best to prepare them.

In short time, Dominic was in good health. "I am so grateful to Silvia and CMMB. Now that Dominic is better, he has so much energy. He plays and sings, and he is learning his vowels. When he sleeps, he stays asleep." What more could a mom want?

Ensuring a healthy start in life is a central focus of CHAMPS. Volunteer community health workers, deployed by CMMB in each of our CHAMPS communities, make tens of thousands of home visits to at-risk families—monitoring and tracking their health status, linking them to the nearest health facility, and providing counseling on nutrition and safe water, sanitation, and hygiene. Deeply committed to their neighbors, they are true changemakers in their communities.



## IMPACT 2019

- 29,904 children under 1 were fully immunized
- 11,163 children under 5 were treated for malnutrition
- 24,831 children received de-worming medication





## IMPACT 2019

- **262,745** people received water, sanitation, and hygiene services
- **232,245** received purification sachets
- **30,500** with increased access to safe water through hand pump repairs



## Clean Water

**We are committed to . . . ensuring that communities have sufficient access to safe water.**

It is 3:00 a.m. on a September morning. Ruth, Bridgette, and Catherine, three students among the 400 who attend Simungoma Primary School in Zambia, have started the journey to a shallow well they dug to obtain water. The girls get an early start to ensure they get to the well before others have drained it dry.



“The water is dirty,” explains Katanekwa Sambula, one of their teachers. “It is only supposed to be used for washing hands and watering plants, but many students drink it.” It is often the only water they have.

By mid-October, the early morning peace is broken by the rumbling of heavy machinery. Students and teachers at the school watch in excitement as a drilling rig bores ever deeper in the parched soil. At 44 meters they strike liquid gold—clean water. This is the first fresh water the school will have had in a long time.

“We thank God for the well. It’s going to help us improve health and sanita-

tion. It will help with school attendance, as students will not need to journey far for water. We can now plant an orchard and a garden, so the well will help with nutrition. It is the solution to so many problems,” Mr. Katanekwa explains.

The well, solar power pump, and storage tank will provide clean water to the school and to 500 nearby households. It is one of several that CMMB has provided to schools, health facilities, and communities as part of our water, sanitation, and hygiene initiatives.

**“Clean water, the essence of life and a birthright for everyone, must become available to all people now.”**

—Jean-Michel Cousteau





STANDING TOGETHER OVER TIME

## HIV/AIDS

We are committed to . . . ensuring the prevention and treatment of HIV/AIDS.



**H**osanna, 22 years old, is the loving mother of two. Hosanna lives in a poor community, and her parents died when she was very young. Left in the care of her grandmother, she married at a young age and soon after was happy to learn that she was pregnant.

Hosanna visited South Sudan's Yambio State Hospital for antenatal care, and as is standard practice, was tested for HIV. When the results showed her to be positive, Hosanna was flooded with emotion. "I was afraid of what people

would think of me after they learned my status . . . I was scared of what would happen to my baby." Hosanna neither ate nor slept for days.

Aware of the resources available through CMMB, Hosanna's sister brought a community health worker to visit. "The counseling made me realize that I had to rise up and seek treatment for the sake of my children."

Desperate to help her unborn child, Hosanna took critical precautions during her pregnancy to reduce the chance that her infant would become infected during pregnancy and breastfeeding. Thanks to treatment at the CMMB-supported health facility, Hosanna's baby is happy, healthy, and HIV free.

"I was tested early, and my baby is safe . . . I will take care of myself so that I can live to watch my children grow. We are the mothers of the world, and our children are the future."

**"I have heard your prayers. I have seen your tears.  
I will heal you."**

—Kings 20:5



### IMPACT 2019

- **656,826** people accessed HIV services
- **32,974** people on HIV medications
- **24,329** children and adults living with suppressed viral loads





## IMPACT 2019

- **2,367** community health workers supported by CMMB
- **30,708** household visits by community health workers
- **222** health facilities supported



STANDING TOGETHER OVER TIME

## Strengthening Healthcare Systems

We are committed to . . . ensuring that health facilities are adequately staffed and supplied to meet the needs of pregnant women and children

When volunteer midwife Sarah Rubino entered the birthing room at St. Therese Hospital in Nzara, South Sudan, it was clear that there was a problem.

“The baby had just rotated enough that Mary, the mother, was able to push the head completely out. But then the baby’s head stopped moving out and regressed back, indicating that the shoulders were stuck.

”In a crisis like this, it seems like time flies by at a moment when time is so precious. Finally, the shoulders shot out along with the rest of the baby’s body. Then came another challenge—the baby was not breathing. I carried him to where a mask and suction bulb lay, only to realize the hospital was nowhere near as advanced as what I was used to back in the United States. There was no baby warmer. No available oxygen. No suction machine.

”Vicky, a CMMB-trained midwife started breathing for him using only a simple Ambu bag. His heart started to slow down below 60 beats per minute. I looked up at Mary, wanting to apologize to her. She looked at me with a



far-off look that I recognized as that of a mother preparing to lose her baby.

”And then a ray of light shone down on that birthing room. The boy gave a weak cry, coughed, and started to howl—music to our ears. Mary named her son Gbianami. It translates as ‘God is with me.’”

Says Dr. Andruma Mustapha of the maternity ward: “When a pregnant woman comes to the hospital in distress, when she and her baby are at risk of dying and we are able to give them the care they need so that they leave healthy and happy . . . nothing brings me more joy.”

In 2019, as part of our health system strengthening initiatives, CMMB completed construction of a new operating theater and new maternity and surgical wards at St. Therese. These will dramatically improve the hospital’s ability to manage high-risk deliveries and provide common surgical services never before available in this remote corner of South Sudan.



# Volunteers

We know from our experience in the field that lack of access to basic health services often means the difference between life and death for women and children living in poverty. In addition to a lack of essential medicines and medical resources, one of the biggest barriers to access is a critical shortage of skilled health workers. To address this shortage, we place healthcare professionals into CMMB programs.

Our founder, Dr. Paluel Joseph Flagg, led by example when he traveled to Haiti in 1913 as a medical volunteer. Throughout the years, our Volunteer Program has stood the test of time and served the poor with medical services. Our extraordinary volunteers continue to honor Dr. Flagg’s legacy of service to “the least of these.” Our volunteers are living out their faith, expressing their values, and putting their knowledge and skills into action to provide high-quality healthcare to vulnerable women, children, and communities in need.



## IMPACT 2019

- 595 volunteers
- Working in 16 countries
- Totaling 87,842 hours of service



Dr. Jose Garcia, an Aurora Fellow and three-time CMMB international volunteer, began his journey with CMMB as a medical analyst intern at our headquarters.

As a doctor, Jose Garcia felt a call to serve the most vulnerable and moved from New York to Mutomo, Kenya, to work at Our Lady of Lourdes Mutomo Mission Hospital for a year. He brought expert care to his patients, built the capacity of local health workers, and reached out to the community to provide cervical cancer screenings and other services.

As his mission in Kenya was ending, the opportunity of a lifetime arose. CMMB’s longest-serving volunteer, Dr. Tom Catena, needed doctors to fill in for him at Mother of Mercy Hospital in Sudan. Dr. Tom was temporarily leaving to fulfill his duties as chair of the Aurora Humanitarian Initiative. Dr. Jose traveled to the Nuba Mountains and spent four months working six days a week. He encountered cases he’d never seen before. Reflecting on the reality of people living in one of the world’s most remote regions, he noted:

“I had a patient in Sudan, Mary, whose sister had passed away just a month before of cancer. Her sister’s baby was less than a year old. The baby had pneumonia and was malnourished and needed to be admitted to the hospital. Mary had a critically important decision to make. If she stayed with the baby, her own children at home would have no one to care for them. Yet she did not feel she could leave her sister’s baby alone, without family. Luckily, we were able to find a mother at the hospital who said she would care for the baby until Mary could return. A beautiful and selfless act.

“You see the work in these contexts. It’s not only about the medical care. The emotional care matters, too. Surgeries and rounds take a toll, and



you feel exhausted. But little can be done when you come face to face with the needs of someone who has so little, and yet more is asked of them. This is why I am here, and this is why they need us.”

Dr. Jose follows not only his calling as a medical doctor but also the calling of God to extend his hands to the poor and work every day to make the world a better place for those in need. As for so many of our volunteers, his sacrificial service is an inspiration to us all.

**“It’s not about the difficulties of treating a disease or not having a certain medicine. It’s about what goes on in the minds and the hearts of patients. It’s about what my fellow human feels.”**

—Dr. Jose Garcia, Aurora fellow and CMMB volunteer



# Medical Donations Program

For over a century, medical missionaries, mission hospitals, and government ministries of health have turned to CMMB's Medical Donations Program for much-needed medicine. Whether we are asked to respond to a catastrophic disaster or fill gaps in a mission hospital's pharmacy, no request is too small or too large. Lives hang in the balance.

We are grateful to our pharmaceutical partners for their contributions of medicine, and to you, whose support makes it possible for us to deliver these lifesaving medicines to the remotest corners of the world.

## Gifts in Kind

CMMB is thankful for all those who have provided medical donations and supplies over the years. Here are a few\*:

Accord Healthcare Inc.	Breckenridge Pharmaceutical Inc.	Henry Schein Inc.	Mission Pharmacal Company
Amneal Pharmaceuticals Inc.		Integra LifeSciences	Mylan
Apotex Inc.	Bristol-Myers Squibb	Johnson & Johnson	Ora Sure Technologies Inc.
BD	Camber Pharmaceuticals Inc.	Jubilant Cadista Pharmaceuticals Inc.	Previnex
Benco Dental	Carlsbad Tech	Merck & Co.	Unichem Pharmaceuticals (USA) Inc.
BioComp Pharma Inc.	Eli Lilly & Co.	Merit Pharmaceutical	

\*This is a partial list



**1913**  
CMMB founder Dr. Paluel Flagg makes his first trip to Haiti to treat leprosy patients.



**1928**  
CMMB is formally incorporated, and our first medical mission team, comprising two doctors and four nurses, carry donated medicine to Puerto Rico in response to Pope Pius XI request to aid hurricane victims.



**1931**  
Blue Cross Circle volunteer clubs are formed around the United States to collect unused prescriptions and make bandages from bedsheets to send to CMMB, where they are repackaged for use overseas. The Circles remain in operation into the 1980s and are our primary sources of medical donations.



**1949**  
The Venerable Archbishop Fulton Sheen joins CMMB's board and ushers in an expansion of the Medical Donations Program through his relationships with US pharmaceutical leaders.



**1978**  
Mother Teresa visits CMMB headquarters to collect an annual allocation of leprosy medicine for her 45,000 patients. This was one of several visits she makes to CMMB.



**1989**  
CMMB is awarded the prestigious Damien-Dutton Award for our medical support toward the eradication of leprosy.



**1999**  
CMMB is a founding member of the Partnership For Quality Medical Donations (PQMD), a global alliance leading the development of high standards in medical supply and service donation.



**2005**  
CMMB sends \$4.9 million in medical relief in response to the Indonesian tsunami, which claimed more than 225,000 lives.



**2010**  
An earthquake in Haiti claims more than 300,000 victims and CMMB's Medical Donation's Program provides \$46 million in medicine and medical supplies to aid recovery.



**2019**  
CMMB supports internally displaced people in protracted humanitarian crises in Syria, Yemen, and South Sudan and emergency relief efforts in Mexico, Mozambique, Zimbabwe, and the Bahamas.

## IMPACT 2019

- Working with **80** partner organizations
- Shipping more than **1,800** pallets of medicines and supplies
- Supporting **2,964** health facilities in **39** countries

Medical Donations Over Time





Our Supporters

Catholic Medical Mission Board is honored to acknowledge the exceptional support of our generous donors, whose steadfast support has sustained our lifesaving work.

Together in faith, we are advancing our shared mission and vision to provide quality healthcare to serve vulnerable women, children, and communities with love, dignity, and respect. We love what we do, but we can't do it without you. We are grateful for your compassion and sustained generosity. Mother Teresa said, "I see God in every human." We see God in you.



CMMB gratefully acknowledges the following generous individuals, corporations, and foundations, who supported our mission during FY2019, October 1, 2018, to September 30, 2019.

<b>\$500,000+</b>	Ms. Nancy Meaney*	Edmund Rice Foundation of Australia	American Endowment Foundation
Anonymous	Mr. Michael Rinaldi Jr.*	Food for the Poor Inc.	Mr. Lamberto Andreotti
Mr. & Mrs. James M. Cornelius	St. Catherine University	Ms. Elaine M. Goebel*	Mr. George Assie
Mrs. Margaret Longto	Vanguard Charitable Endowment Program	PayPal Giving Fund	Mr. Dean A. Beickelman
	Miss Dorothy Wroblewski*	Rev. Charles A. Heidt	Rev. John P. Bergstadt
<b>\$250,000+</b>		Dr. & Mrs. Hans H. Huygen	Ms. Victoria Beynon
African Mission Healthcare	<b>\$50,000+</b>	Rev. Norman P. Imgrund*	Mr. Thomas Bliznick
Bon Secours Health System	Anonymous	Kenda Onlus	Mr. James F. Bohan
GHR Foundation	Mr. & Mrs. Patrick F. Adams	Mr. & Mrs. Quentin J. Kennedy	Mr. & Mrs. Brian Callahan
Sisters of Charity of the Incarnate Word	Adams Family Foundation	Mr. Donald R. Lachowicz	Judge Lawrence L. Cameron
Sudan Relief Fund	Ms. Laura Audino	Love Meyer Family Foundation	Mr. & Mrs. Nathaniel L. Carr
Mrs. Mary Winkler*	Charles R. Wright Charitable Remainder Trust	Medicines For Humanity	Mr. Armando J. Caruso*
	Combined Federal Campaign	Mr. & Mrs. John Meyer	Catholic Health Services of Long Island
<b>\$100,000+</b>	Mrs. Helen Devlin*	Mrs. Madeline Migura	Mr. Henry P. Cops
Aurora Humanitarian Initiative Foundation	Ella Cochrane Charitable Remainder Trust*	O'Shea Family Foundation	Mr. & Mrs. Peter Crnkovich
BD	Mrs. Alice R. Glynn*	Mrs. Susan Owen*	Damien-Dutton Society
Bristol-Myers Squibb Foundation	Miss Regina T. Krefft*	Ms. Mary E. Powers*	Edward Jones
Rev. John A. Coghlan*	Mr. & Mrs. William Pasulka	Mr. William Sheehan	Estate of Anthony Tabone
Mr. John H. Dengler*	Rita A. Starr Trust*	T Rowe Price Program For Charitable Giving	Mr. & Mrs. John R. Evans
Mr. & Mrs. Eugene F. Fama	Sisters of the Sorrowful Mother Generalate Inc.	The Wendell Family Charitable Fund	Fidelity Brokerage Services LLC
Fidelity Charitable Gift Fund	Mr. James Stofer*	United Therapeutics Corporation	Ms. Mary L. Flynn
Mr. Desmond G. FitzGerald	Mr. & Mrs. Matthew Styczynski	Mr. & Mrs. John T. Walsh*	Mr. John N. Gavin
Ms. Elizabeth H. Fuller*	Trust of James Audino*		Mr. & Mrs. Edward J. Giniat
Hope for Poor Children Foundation		<b>\$10,000+</b>	Goldman Sachs Philanthropy Fund
Johnson & Johnson Contribution Fund	<b>\$25,000+</b>	Anonymous	Dr. Damian W. Grivetti
Mr. John E. Keenan*	Anonymous	Mr. & Mrs. Tom Abate	Mr. David H. Grubb
Mr. William R. Loichot*	Benevity	Mr. Michael G. Allare	Ms. Mary Beth Hampson
Ms. Janine Luke	Mr. & Mrs. John E. Celentano	Allianz Life Insurance Company of North America	Dr. & Mrs. Alfred Hartmann

\*Denotes deceased donors

“For it is in giving that we receive.”

—St. Francis of Assisi

Ms. Barbara Hodnett  
Mr. & Mrs. Mark Huber  
International Medical Corps  
John Hancock Mutual Life Insurance Co.  
Johnson & Johnson Family of Companies  
Rev. Anthony Kazarnowicz  
Mr. & Mrs. Chris King  
Maj. & Mrs. John Kovalek  
Mr. Richard Kreitzberg  
Mr. Philip B. Laufer\*  
Mr. & Mrs. Aloysius A. Leopold  
Ms. Mary A. Leyden\*  
Mrs. Carol H. Luders  
Drs. Jon & Gretchen Marsh  
Ms. Marilyn Masiero\*  
Mrs. Mary A. McCoy\*  
Mr. Thomas M. McDonough  
Mr. & Mrs. Kieran J. McGrath  
Merck & Co. Inc.  
Merrill Lynch, Pierce, Fenner & Smith Inc.  
Mr. & Mrs. Joseph J. Moran  
Mr. Robert Navin  
Mr. & Mrs. Edwin B. Neill  
Network for Good  
Noster Foundation  
Dr. Udoh Obioha  
Ms. Kathleen A. O'Connor  
Ms. Rosemarie Osborn  
Mr. Hank Raucci & Mrs. Sandra Raucci  
Raymond James Charitable Endowment Fund  
Mr. & Mrs. Michael J. Runnebohm  
Mr. Nick J. Runnebohm  
Dr. Judith A. Schaeffer  
Deacon & Mrs. John V. Sebastian  
Sebastian Family Charitable Foundation  
Ms. Kathleen L. Sharp  
Mrs. Mary T. Sheppard  
Shobha Sharma Thanksgiving Account  
State Street Global Advisors Funds  
Ms. Theresa M. Strain  
Mr. Frank L. Sullivan Jr.

Mr. & Mrs. Thomas Tebbens  
The American Gift Fund  
The Eucharist Foundation  
The McDonald Family Foundation  
The Mushett Family Foundation  
TIAA  
Mr. & Mrs. Egbert P. Timmers\*  
UBS Financial Services Inc  
USAA  
Wells Fargo Advisors  
Mr. Gerald Wilde  
William C. Dowling, Jr. Foundation  
Mr. John P. Wood\*  
Mr. Alexander J. Yerman  
Mr. & Mrs. John Zurell

**\$5,000+**  
Anonymous  
Mr. Charles J. Adams  
Mr. & Mrs. William Albright  
Rev. Donald J. Antweiler  
Bank of America Charitable Gift Fund  
Mr. & Mrs. Luke Bartkiewicz  
Mr. & Mrs. Harper Beall  
Mr. William B. Beck  
Mrs. Rose Belt  
Mr. Richard Bene  
Mr. & Mrs. Jacques Bergeron  
Ms. Marietta Bernot  
Dr. James V. Blazek  
Mr. Stephen Botts  
Mr. John Brennan & Mrs. Fran Brennan-Sullivan  
Mr. Edward Briody  
Mr. Robert Brooks  
Mrs. Charlene Bumol  
Dr. Thomas Burns  
Ms. Patricia M. Burns  
Capital Group of Companies Charitable Foundation  
Mr. Terence Carlson  
Mr. Robert Chavko  
Mr. & Mrs. David Cheever  
Mr. Francis Claffey  
Ms. Frances N. Clagett  
Mr. & Mrs. Kenneth Clancy  
Mrs. Bradley Collins

Miss Patricia J. Connell  
Mr. & Mrs. Michael D. Connelly  
Mr. Richard L. Connors  
Mr. Steven Conrad\*  
Ms. Janine Cooper  
Mr. Roy R. Cosby  
David A. Noyes & Company  
Mr. Robert A. Davidson  
Mr. Donald T. Delamore  
Dr. Robert Dinn  
Mr. Timothy Dockman  
Mr. Scott Dunglinson  
Mr. & Mrs. Gregory P. Dunn  
Rev. Louis G. Dupuis  
Mr. & Mrs. Gregory Etzel

**“God is good and has blessed me always with what I need. If everyone would share just a little, no one would be thirsty or hungry.”**

—CMMB Donor

Ms. Beverly Farinelli  
Mr. Joshua Farrar  
Mr. Stephane H. Finkenbeiner  
Mr. James Finley  
Mr. Ivan Fischer  
Mr. & Mrs. Thomas Fitterer  
Mr. John C. Fleming  
Mr. Robert L. Freedman  
Ms. Frances A. Gallagher  
Ms. Elizabeth A. Gardner  
Mr. & Mrs. Robert Gardner  
Mr. Thomas R. Geis  
Mrs. Jane A. George  
Dr. Nancy E. Gibbs  
Mr. William J. Gilchrist  
Ms. Lenore R. Gleason  
Gleason Family Foundation  
Mr. & Mrs. Bernard J. Grimes  
Mr. & Mrs. Diadato F. Grisi  
Ms. Violet M. Haelterman  
Dr. & Mrs. John F. Haight Ph.D.  
Helen C. Devlin Trust  
Mr. & Mrs. Joseph Hines  
Ms. Mary E. Hoffmann  
Dr. & Mrs. John P. Hoying  
Mr. Robert Hurtubise  
Mr. Thomas A. Hychalk  
Infaiith Community Foundation  
Mrs. Rita James  
Mr. & Mrs. Michael Jones  
Ms. Pauline Joyce  
Mrs. Margaret A. Jurgens  
Sister Martha Juskewycz O.C.S.O.  
Ms. Debra Kellogg  
Mr. & Mrs. Gary L. Kent  
Mr. Charles Kindrick  
KLM Foundation  
Mr. Frederick W. Koehler Jr.  
Mr. & Mrs. Keith Koval  
Mrs. Eileen Kruzynski  
Mr. Raymond P. Kurkijy  
Mr. & Mrs. Daniel J. Landrigan  
Mr. Justin Largen  
Mr. John Larrinaga  
Ms. Hye Y. Lee & Mr. Istvan Robel  
Los Alamos National Laboratory  
Ms. Maria Loya  
Mr. & Mrs. James Martin  
Dr. Lawrence J. McCarthy  
Ms. Kathleen McCarthy  
Mr. & Mrs. William A. McEachern  
Sandra H. McGinnis  
Mr. & Mrs. Joseph McSweeny  
Mr. John C. Meditz  
Mrs. Patricia M. Mierzejewski  
Mr. Frank Miller  
Milton and Fannie Brown Family Foundation  
Mrs. Luciya A. Miner  
Mr. & Mrs. Edward P. Molnar  
Montana Community Foundation  
Morgan Stanley  
Ms. Kathleen W. Murnion  
Ms. Patricia C. Murphy  
National Christian Foundation  
Indiana



Our Supporters *(continued)*



- Msgr. John Neff

Mr. Kenneth Nolan

Mrs. Mary Anne Nordeen & Mr. Carl W. Nordeen

Mr. Robert Ochylski

Ms. Mary C. O’Gorman\*

Ms. Hilary Olson

Mr. Terence O’Rourke Jr.

Ms. Charlotte M. O’Toole

Mr. & Mrs. Charles E. Pallas

Dr. James Peck & Joan McKay Peck

Mr. & Mrs. Allen E. Perrel

Mary Jo Pfefferkorn

Pfizer Foundation Matching Gift

Mr. Frank Prochazka

Ms. Bethany Pugh

Mr. & Mrs. Michael Quigley

Mr. & Mrs. Thomas J. Quinlan

Mr. Leo M. Reid

Renaissance Charitable Foundation Inc.

Mr. & Mrs. Kurt B. Rothe

Mr. & Mrs. Michael Runge

Runnebohm Construction Inc.

Mr. Philip H. Ryan
- Mr. & Mrs. Roger Schinella

Mr. Warren A. Schneider

Mr. & Mrs. Robert Schultz

Mr. Ronald Schwenkler

Mr. James Sheridan

Ms. Louise Shimkin

Ms. Patricia R. Sinnott

Ms. Jeanette Sliter

Mr. & Mrs. Edward H. Sonn

Mrs. Virginia J. Stea

Mr. Brett J. Stone

Rev. James M. Sullivan

Rev. Gary S. Sumpter

Ms. Marilea Swenson

Mr. Matthew P. Swit

Ms. Laurie Talarico

Alfred Talbot

Mrs. Tracey Tesauro

The Lazzara Family Foundation

The Maria Therese Kimcuc Tran Fund

The Reed Foundation

The U.S. Charitable Gift Trust

Rev. Robert W. Thrasher

Mr. & Mrs. Philip Tobin

Mr. & Mrs. James Trowbridge

- Ms. Mary Tubello

Ms. Aimee Villapando

Ms. Jacqueline Vitulli

Mr. Alan Ward

Mr. William D. Watson

Mr. James H. Wilkins

Linda and Bruce Wilkinson

Dr. & Mrs. Robert Williams

Mr. John Wilson

Wintrust Investments

Dr. Michael J. Wolohan

Wolohan Family Foundation

Tom & Whitney Wonderlich

Mr. Andrew Wright

Mr. Anthony Ziebron

Mr. Werner J. Zumbrunn
- Dr. & Mrs. Leo R. Brown

Mr. J. Adger Brown

Mr. William F. Bushnell

Earl Gerald Carlos

Mr. Luke Catherine

Catholic Education Centre

Charles Schwab Foundation

Mr. & Mrs. Karl Chase

Mr. Eugene Chatelaine

Mr. Frank L. Chavez

Mr. Joseph F. Chaya

Ms. Suzanne M. Cheesman

Mr. & Mrs. Rick Chester

Mr. & Mrs. Andrew Chosak

Poor Clare Nuns

Father Kenneth S. Coleman

Mr. & Mrs. James Cote

*“I don’t have much but when I had my daughter it was in the safety of a hospital with wonderful midwives, nurses, and doctors . . . all women should have the same opportunity. CMMB, you make the world a better place.”*

—CMMB Donor

- \$2,500+**

Anonymous

Mr. & Mrs. Robert Almerini

AmazonSmile

Mr. Joseph C. Amersbach

Mr. Paul Andrys

Mrs. Salvatore Attard

Ms. Jill Badik

Mr. James Baker

Mr. George Balduf

Mr. & Mrs. Timothy P. Barnaba

Mr. William Barry

Mr. John J. Bart

Ms. Eileen M. Beck

Mr. Philip Bede

Mr. Raymond J. Berardi

Boeing Employee Community Fund

Mrs. Mary Bognich

Mr. & Mrs. Paul Bonanto

Terry Breen

Mr. John Brett
- Mr. Ronald Coutu

Mr. William Crane

Elisabeth M. Crowley

Mr. Ronald P. Cuenod Sr.

Ms. Ermelinda Cuono

Mr. Stephen Curran

Mr. & Mrs. Clarence Darrow

Mr. F. Earle Davis

Mr. & Mrs. G. Berton Davis, Jr.

Ms. Marilyn Deardorf

Mr. Thomas W. DeBoise

Mr. & Mrs. Alfred C. DeCrane Jr.

Mr. & Mrs. Gregory M. DeSaye

Mrs. Lois J. Dickinson

Mr. Stephen Dill

Br. Scott P. Dilworth, OSCO

Mr. Bill J. Dixon

Ms. Mary E. Dixon

Mr. James E. Doerr

Mr. Michael G. Doherty

Ms. Susi Dokken

Ms. Holly Dravitzki

Mr. David Dulock

Mr. & Mrs. Charles M. Dunham

Mr. Daniel R. Edgerton

Mrs. Jacqueline B. Engelhart

Mr. John A. Ernster

Facebook

Dr. Peter C. Farrell

Dr. Robert J. Ferretti

Mr. John Ferroli

Mr. & Mrs. Leon J. Fiegel

Dr. John J. Fitzgerald

Mr. Thomas J. Fitzpatrick

Mr. Sam Fletcher

Mr. Thomas P. Fontana

Mr. Lewis Fountain

Rev. James Fox

Ms. Clare Francis

Kay Frissora

Ms. Priscilla A. Gaison

Mr. Henry P. Galmish

Ms. Blaine W. Galonski

Ron L. Gant

Dr. & Mrs. Robert A. Gasser Jr.

Mr. Joseph Gassib

GE Foundation Matching Gift Program

Mr. & Mrs. George N. Gee

Mr. Darryl Gerndt

Mr. & Mrs. John Gernhauser

Mr. Richard J. Gibbs, Sr.

Dr. Robert L. Glass

Mr. & Mrs. Michael Glauner

Mr. James Glinski

- Mr. & Mrs. Harry E. Grant

Mrs. Monica Gray

Greater Houston Community Foundation

Mr. & Mrs. John Grivetti

Dr. Alfred Guthrie

Ms. Mary Ann Hanzel

Mr. Kenneth Harvey

Ms. Barbara Havira

Mr. & Mrs. J. Haydel

Deacon & Mrs. Thomas Hayward

Mr. & Mrs. Justin Hebert

Ms. Janice Hennessey

Ms. Carol Henrichs

Mr. Armando Hernandez

Ms. Kathleen Higgins

Mr. Stephen T. Hodapp

Ms. Betsy J. Holland

Mr. Albert Howard

Mr. Donald P. Hudok

Huntington National Bank

Invesco Investment Serivces Inc.

Mr. & Mrs. Ed Johnson

Ms. Rita Kaiser

Mr. Brian Kelly

Mr. Philip Kenzora

Ms. Mary G. Kernaghan

Ms. Sungmi Kim

Mr. & Mrs. Charles Kircher

Mr. Peter L. Knapp

Mr. & Mrs. Scott Kobler

Mr. Christopher P. Konrad

Mr. Alan Koruth

Mr. James Kropid

Ms. Virginia A. Kunkel

Mr. Robert Kuzyn

Mr. & Mrs. Walter M. Lacyk

Dr. Joseph C. Langlois

Mr. & Mrs. Chris Laursen

Mr. Alfred Lemmo

Ms. Kathleen M. Leonard

Mr. Robert M. Lesmerises

The Reverend Monsignor Alfred Lo Pinto

Mr. Benjamin Locher

Mr. Joseph M. Lomangino

Mr. James M. Longville

Mr. Andree Louvierre

Ms. Mary Lubbers

Ms. Sara Lukan

Mr. & Mrs. Alexander Lyczak Jr.

Dr. Joyce A. Majure

Mr. Jaime J. Maldonado Jr.

Ms. Jeanne Malloy

Ms. Beatriz Mann



*“Jesus says if we love Him we need to be His hands and feet. This donation is small but my heart and prayers go out to all mothers in need.”*

—CMMB Donor

- Mr. Peter Marci

Mrs. Florence Martin

Mr. James J. Mason

Mr. William H. Mastin

Mr. & Mrs. Andrew P. Matragrano

Mr. David K. May

Mr. Francis L. Mc Elgunn

Lt. Col. Amy E. McCarthy

Mr. & Mrs. Arthur J. McClelland

Dr. Michael F. McCormack

Mr. & Mrs. Frank McCreesh

Mr. Patrick D. McNelis

Rev. Dr. Brian McNulty

Mr. Matthew V. Merola

Mr. Matthew Moffit

Mr. Anthony G. Moleski

Dr. & Mrs. Matthew B. Monesmith

Mr. & Mrs. Curtis Morgan

Mr. Michael L. Mudd

Mr. Paul Mueller

Mr. James Mulally

Ms. Cecilia K. Mullen

Dr. James A. Murphy

Mr. Robert W. Murphy

New Hope Baptist Church

Mr. Richard A. Niemann

Mr. & Mrs. Tom O’Connor

Rev. Edward A. O’Melia

Pacific Life

Mr. & Mrs. Gerry Page

Mr. Thomas J. Palumbo

Ms. Jennifer Papa
- Mr. Bill Paparis

Pauline A. Stolteben Foundation

Mr. & Mrs. Michael Peevey

Mrs. Pamela Pellegrini

Mr. John M. Persil

Dr. Thomas Peyla

Mr. Thomas W. Planek

Mr. & Mrs. Roger E. Podesta

Mrs. Martha Pope

Rev. Leon A. Powell\*

Mr. Warren Pressley

Mr. Ronald F. Proud

Pyewacket LLC

Mr. John Queralt

Mr. Dennis Quinn

Mr. & Mrs. Peter A. Quinn

Raymond James Global Account

RBC Wealth Management

Ms. Karen Reabe

Mr. Anthony C. Reding

Mr. & Mrs. Edward B. Reilly

Mr. James Reilly

Renaissance Charitable Foundation Inc.

Dr. Michael Reuveni

Ms. Mary P. Richards

Ms. Mary Richardson

Ms. Marie P. Richter

Mr. & Mrs. Boyd K. Roberts

Mr. James B. Robinson

Mrs. Kerry Roetzel

Mr. Robert Rooney



Our Supporters *(continued)*

<b>\$2,500+ <i>(continued)</i></b>			
Mr. John Saam	Ms. Bonnie Staley	Dr. & Mrs. Atef M. Tawadros	Mr. & Mrs. Frederic Watke
Mr. Matthew Sallee	Mr. William A. Starbuck	Mr. Edward L. Terry	Alena & John Watts
Ms. Fran Saul	Ms. Vivienne Stephens	The Catherine M. Walsh Foundation	Mr. John Weber
Mr. & Mrs. Cyril J. Schaefer	Rev. Augustus Stiegeler	The Derby Fund	Mrs. Marion N. Whelan
Ms. Diana Scheeler	Mr. & Mrs. John Stiegelmeier	The New York Community Trust	Mr. Jacob Wiechman
Mr. & Mrs. Kurt F. Schmidt	Mr. & Mrs. Dennis P. Stock	Mr. Ben Thomason	Mr. & Mrs. Richard B. Williams
Mr. Fred Schulz	Robert and Lauren Stout	Dr. Carter Towne	Mrs. Patricia A. Winkler
Mrs. Elizabeth Simon	Mrs. Margaret M. Strain	Trammel Family Fund	Mr. & Mrs. Jeff Witte
Dr. Douglas Smith	Mr. & Mrs. Art Suberbielle	Ms. Linda Tucciarone	Ms. Kathleen Wolf
Mr. & Mrs. Snelson	Mr. Robert H. Sueper	Ms. Lynne C. Tuohy	Mr. & Mrs. Thomas Young
Mrs. Eleanor M. Snyder	Dr. & Mrs. Michael J. Sullivan	UBS Financial Services Inc	Ms. Patricia M. Young
Mr. & Mrs. M. J. Southard	Mr. James M. Sullivan	Mr. Matthew Ungs	Mr. & Mrs. Christian A. Young
Ms. Dyan Spinnato	Mrs. Sophia Svelund	Mr. Bryan Walsh	YourCause, LLC
St. Joseph Parish	Mr. Joseph N. Swab	Ms. Anita Walters	Mr. James P. Zimmerman
	Dr. & Mrs. Thomas R. Sweeney	Mr. Thomas Ward	Mr. & Mrs. Andrew Zych
	Mr. John T. Swiss		Mr. Walter Zydlewski



“I’ve spent over 50 years in the business of investing, but for more than the past 20, I’ve shifted my focus to investing in people, investing in saving lives of the poor and the sick, particularly in places where they have little support, or often none at all—no safety net.”

There are so many millions of desperately poor people, especially in the developing world, that we can easily feel overwhelmed, unsure how to be helpful, where to begin. Every minute, a young mother dies in childbirth, every ten seconds, a child dies somewhere from lack of clean drinking water. How do thoughtful people of good will, find and take this first step on our journey—hopefully

the first of many—to answer our calling to save lives?

It’s very important to me that my hard-earned money be invested wisely and well—in efficient, productive activities managed by experienced people of talent and character. Happily there are many good organizations engaged in this life-transforming and lifesaving work, and one of the best around is CMMB—the Catholic Medical Mission Board. I not only support CMMB with my available resources every year, but I’m providing to continue this effective support after I leave this life.

Everything we achieve, we achieve together. Without the support, love,

and prayers of all of our faithful donors, partners, staff, volunteers and friends, we could not do what we do best: bringing health and opportunity to women, children, and their communities.

Thank you for your support and partnership in this important work. I’m honored to serve on CMMB’s board and work to advance the mission of this worthy enterprise. I’m grateful to you and to all of our partners for their lasting commitment and willingness to stand together to ensure that CMMB’s mission continues to serve those most in need.

—Desmond G. Fitzgerald  
CMMB Board Member

The Legacy Society

The Legacy Society recognizes those individuals who have provided for the long-term work of Catholic Medical Mission Board by making a planned or deferred gift. Their commitment, made during their lifetime, enables CMMB to plan for the future and meet long-term goals from a position of strength. Lifetime membership is bestowed on individuals who have enrolled in the Annuity Program or have named CMMB as a beneficiary of their will, trust, life insurance, or IRA.

Annuity Members

The following individuals opened a charitable gift annuity with CMMB, providing the annuitant with a guaranteed income for life and the knowledge that they have made a meaningful gift that will benefit women and children in years to come.

Mrs. Margaret F. Agnew	Ms. Martha R. Hacala
Mrs. Alberta Attanasio	Ms. Anna M. Hafeli
Mrs. Beatrice T. Barrera	Mrs. Dorothy J. Heberlein
Miss Stella Bejnarowicz	Mrs. Marita C. Herrera
Mr. Dennis L. Beshara	Mr. John D. Herrick
Ms. Cecilia A. Braam	Mrs. Catherine Horn
Ms. Josephine Brienza	Mr. Leo J. Iannuzzi
Mr. Edward Briody	Rev. Donald R. Imming
Mr. Walter J. Broschious	Rev. Thomas P. Ivory
Mrs. Hildegard B. Buel	Dr. William J. James
Ms. Mary E. Burke Nash	Mrs. Peggy A. Jasso
Mrs. Geraldine F. Burton	Mrs. Margaret A. Jurgens
Mr. Thomas E. Byrne, Jr.	Mrs. Cecilia V. Kallay
Dr. Mary D. Cancellare	Mr. Charles A. Kiddy
Mrs. Iris Castillo	Mrs. Anna M. Koppers
Mrs. M. Jeanne Cayo	Mr. Robert K. Krause
Dr. Jessalyne L. Charles	Mrs. Mabel I. Lane
Ms. Janet T. Christopher	Mrs. Josephine A. Laux
Miss Irene T. Constantine	Mr. John Leinenweber
Mr. Robert R. Daquin	Mr. & Mrs. John A. Lomurno
Rev. Stephen Deaver	Mrs. Marguerite M. Luckhowec
Miss Dorothy M. Desmond	Mr. Francis J. Mahoney, Jr.
Mrs. Carmela M. DiSpigno	Mr. Michael Mastriano
Mrs. Rita M. Dinges	Cdr Florence C. Mcdonald Ret USN
Mrs. Mary Lou Dobihal	Mrs. Anita M. McDonough
Ms. Gloria Duday	Mr. Thomas M. McDonough
Mrs. Joyce J. Dumas	Mrs. Cecilia McShea
Mrs. Lynda Eckes	Mr. & Mrs. E. James McTighe
Dr. Barbara J. Fleischer M.D.	Mr. & Mrs. Francis Meekin
Miss Mary J. Foster	Ms. Elizabeth F. Miller
Ms. Grace M. Frey	Mr. Joseph R. Mitosinka
Rose and Paul Gagnon	Msgr. Frederick J. Murphy
Ms. Joann Gavitt	Mrs. Corry S. Nethery
Mr. & Mrs. Donald R. Giasson	Rev. John J. Newell
Mr. & Mrs. Harry E. Grant	Mr. Ronald R. Oberle
Ms. Geraldine C. Guggemos	

Ms. Kathleen A. O'Connor	Dr. & Mrs. Donald C. Salzano
Ms. Teresa M. Ontra	Miss Angelita S. Santos
Mr. & Mrs. Joseph J. Pello	Mr. & Mrs. William Schlegel
Mrs. Donna J. Phoenix	Ms. Joan E. Schmitz
Mrs. Viola Piscatelli	Ms. Karen K. Schulte
Mr. & Mrs. Norbert Pittner	Mr. Richard L. Schwaller
Mrs. Gloria D. Plog	Mr. Thomas P. Sheridan
Mrs. Susan Porter Robinson	Mrs. Marion R. Smith
Mrs. Estelle M. Postel	Miss Helen P. Stegun
Mrs. Mary C. Powers	Mr. Edward C. Tarte
Mrs. Huay-Min Pu	Mr. & Mrs. James Trowbridge
Mr. Robert G. Pumford	Miss Lillian M. Tupac
Mrs. Katherine D. Quigley	Miss Norma Ulivo
Mr. & Mrs. Thomas J. Quinlan	Ms. Frances M. Vincent
Ms. Rosemary Rea	Mr. & Mrs. David Wagner
Mr. & Mrs. James E. Reilly	Rev. Richard F. Wagner
Ms. Karen Riedl	Msgr. James E. Wall
Mrs. Judy N. Riggs	Mr. & Mrs. Gerard A. Weigel
Miss Frances A. Romeo	Ms. Yvonne White
Ms. Angela P. Rosania	Mr. & Mrs. Paul Wilson
Mrs. Rita Rose	Miss Gwendolyn Worrell
Rev. Robert C. Rosing	Ms. Felice Zaldokas
Mr. & Mrs. Ronald C. Rossi	Mr. Andrew Zeko
Mr. David P. Rost	Mr. & Mrs. George E. Zenie





Our Supporters *(continued)*

Planned Gift Members

The following individuals have named CMMB as a direct or residuary beneficiary in their will, trust, or other estate plans.

- Mr. Eric D. Aanestad

Edward Albertone Trust

Ms. Mary Anderson

Mr. Blaise C. Barrios

Ms. Rita Becker

Ms. Carolyn M. Bednarek

Mr. Raymond J. Berardi

Mrs. Virginia B. Birge

Mr. Robert V. Bledsoe

Victor A. Blenkle Trust

Miss Harriet Bly

Miss Margaret Brosnan

Mrs. Patricia L. Burgmyer

Ms. Mary Burke

Mr. Joseph F. Callahan

Mr. Joseph Cantelli

Ms. Anne G. Chipetta

Mr. Thomas S. Cooil

Ms. Josephine M. Cormack

Rev. Allen F. Corrigan

Ms. Joyce Costello

Ms. Margaret J. Cummings

Ms. Barbara H. Cunningham

Mr. Patrick J. Delmore

Mr. Michael G. Devine

Ms. Margaret Drury

Miss Mary J. Drury

Mr. Denis D. Durnan

Mr. Jim Duszak

Mrs. Mary Ann C. Earles

Mr. Charles J. Erpenbeck
- Miss Cynthia Felch

Mr. Daniel J. Fennell

Mr. William Forno

Miss Mary Jane Foster

Ms. Clare Francis

Ms. Grace M. Frey

Ms. Jane Fuegner

Mr. Peter J. Galligan

Rod & Ita Gillis

Mr. Donald J. Glaser, A.S.I.D.

Ms. MaryAnn Gleeson

Ms. Eleanor Glock

Miss Catherine Goebel

Mr. P. Vincent Grado

Mrs. Mary Harbour

Mr. Robert R. Hawkins

Mr. John Hayes

Mr. Wayne J. Hemmen

Ms. Margaret M. Hoffman

Mrs. Suzann C. Horn

Mr. Joseph Hovnanian

Mr. William J. James

Mr. Don Jank

Mr. Michael Jenkins

Mr. David S. Kamide

Ms. Joanne Kenny

Ms. Carol M. Kerler

Mrs. Kathleen P. Kinahan

Mrs. Mary P. Kluck

Mrs. Marilyn Knor

Mr. David J. Koch

- Mr. Greg Konrad

Mr. Charles Kronenwetter

Mr. David Lee

Mr. David O. Lee

Ms. Suzanne Lee

Mr. Robert M. Lesmerises

Mrs. Margaret Longto

Mrs. Carol H. Luders

Rev. Eamon Mackin

Mr. T. J. Maguire

Mrs. Claudine A. Marcoux

Mrs. Kathleen O. Martin

Mr. Dave F. McBride

Ms. Mary McConihe

Mrs. Ann F. McHugh

Ms. Virginia McLaughlin

Mr. Donald R. Messina

Miss Gertrude Meyer

Ms. Jeanne E. Micheline

Mrs. Mary L. Mihm

Father Michael Moon

Mr. John P. Moran

Miss Barbara A. Moroson

Mrs. Patricia Morrissey

Mr. & Mrs. Richard J. Murray

Mrs. Mary E. Nolan

Brian W. Norkett

Estate of Angeline Normand

Mr. William Nugent

Rev. Msgr. Timothy O’Connell

Rev. Jeremiah O’Shea

Mr. Donald W. Ottens

Jon M. Owings, M.D.

Mr. Richard H. Pelkey

Mrs. Mary Ann Pezzullo

Miss Therese F. Pick

- Mrs. Viola Piscatelli

Mrs. Susan Porter-Robinson

Mr. Lozelle L. Pratt

Mrs. Teresa F. Przybylski

Ms. Mary Putschi

Mrs. Nuala M. Quill

Miss Geraldine Rehill

Ms. Elizabeth M. Rice

Ms. Mary Ann Richter

Mr. James P. Ryan

Mr. Laurence Schlegel

Mr. Paul Schullian

Mr. D. R. Schultze

Mr. William Simpson

Ms. Virginia Smith

Mr. Jim Sponsler

Mr. Charles Steer

Mr. George A. Stefani

Ms. Kathleen Stegeman

Mrs. Mary E. Stewart

Mrs. Sylvia O. Stone

Mrs. Sophia Svelund

Mr. Daniel Sweet

Mrs. Anne D. Taylor

Ms. June L. Temple

Mr. Harold J. Thalheimer

Mr. Kyle S. Thibodo

Ms. Rita F. Tobin

Mr. & Mrs. Richard B. Trefny

Ms. Billie F. Vance

Mrs. Arline K. Virgil

Mrs. Florence A. Walsh

Mr. Francis M. Whitesell

Rev. M. R. Yosso

Ms. Patricia A. Zeimis

Mr. Stanley M. Ziemnicki

Bequest Members

The following individuals are posthumously enrolled into the Legacy Society for having provided CMMB with a gift from their estate in 2019. We are indebted to their generosity and remember them in our prayers.

- Anonymous - 2019

Trust of James Audino

Ms. Marylane Burry

Mr. Armando J. Caruso

Ms. Ella Cochrane

Rev. John A. Coghlan

Miss Martha F. Cole

Mr. Steven Conrad

Mr. John H. Dengler

Mrs. Helen Devlin

Ms. Elizabeth H. Fuller

Mrs. Alice R. Glynn

Ms. Elaine M. Goebel

Mr. Merle Hess

Rev. Norman P. Imgrund

Mr. John E. Keenan

Mr. Don F. Kirchner

Mrs. Laurette Latina

Ms. Mary A. Leyden

Miss Pauline Lisse

Mr. William R. Loichot

Ms. Marilyn Masiero

Mrs. Mary A. McCoy

Ms. Nancy Meaney

Miss Lorraine B. Nelson
- Ms. Mary C. O’Gorman

Mrs. Susan Owen

Mr. Michael Rinaldi Jr.

Ms. Mary F. Robek

Mrs. Mary L. Santos

Dr. David J. Smith Ph.D.

Estate of Mary Smith

Rita A. Starr Trust

Mr. James Stofer

Estate of Anthony Tabone

Mr. Richard W. Terrill

Estate of William H. Thomas

Mr. & Mrs. Egbert P. Timmers

Mr. & Mrs. John T. Walsh

Estate of Mary Winkler

Ms. Agnes M. Woloszyk

Mr. John P. Wood

Charles R. Wright Charitable Remainder Trust

Miss Dorothy Wroblewski

Rev. Arthur J. Jakobiak

Father Martin J. Hall

Mr. Thomas C. Meade, Jr.

Mr. Joseph P. Mole, Jr.

Miss Patricia K. DiComo



*“I’ve been to Africa and have seen the lack of basic needs being met. I’ve been fortunate to have had healthcare for all of my five children and I want to be able to help provide that for others. The human spirit of kindness and joy I witnessed was beautiful. May God bless the new mothers!”*

—CMMB Donor

*CMMB thanks all our generous supporters and gratefully acknowledges your contributions. Our sincere apologies to anyone whose name was inadvertently omitted from this list.*



Dear Fr. Walter,

*On behalf of all our poor, sick and suffering brothers and sisters, we thank you for the 50 packages of medicines. May God love and reward each of the benefactors for all the love and sacrifice with which they share in our work. How wonderful is the love of God to give us the chance to be His love to the poor.*

*God bless,  
Mother Teresa, MC  
March 7, 1977*

*Fr. Joseph J. Walter was CMMB’s  
longest serving Executive Director*



# Institutional Partners

CMMB gratefully acknowledges the governments, multilateral and bilateral agencies, corporations, foundations, and organizations that support our work.

Multilateral and Bilateral Agencies

Centers for Disease Control and Prevention  
The Global Fund to Fight AIDS, Tuberculosis and Malaria  
PEPFAR  
United Nations Development Programme  
UNICEF  
United Nations High Commissioner for Refugees  
U.S. Department of State/Office of the Global AIDS Coordinator  
U.S. Agency for International Development  
World Food Programme

Corporations

Allianz Life Insurance Company of North America  
AmazonSmile  
Ameriprise Financial  
Bank of America Charitable Gift Fund  
BD  
Boeing Employee Community Fund  
Bristol-Myers Squibb Foundation  
Capital Group of Companies Charitable Foundation  
Charles Schwab Charitable Gift Fund  
Charles Schwab Foundation  
David A. Noyes & Company  
Edward Jones  
Facebook  
Fidelity Brokerage Services  
Fidelity Charitable Gift Fund  
GE Foundation Matching Gift Program  
Goldman Sachs Philanthropy Fund  
Huntington National Bank  
Invesco Investment Serivces Inc.  
John Hancock Mutual Life Insurance Co.  
Johnson & Johnson  
Los Alamos National Laboratory  
Merck & Co. Inc.  
Merrill Lynch, Pierce, Fenner & Smith  
Morgan Stanley  
National Financial Services LLC

Pacific Life  
Pfizer Foundation Matching Gift  
Pyewacket LLC  
Raymond James Charitable Endowment Fund  
RBC Wealth Management  
Runnebohm Construction Co. Inc.  
State Street Global Advisors Funds  
T Rowe Price Program For Charitable Giving  
TD Ameritrade  
TIAA  
UBS Financial Services  
United Therapeutics Corporation  
USAA  
The U.S. Charitable Gift Trust  
Vanguard Charitable Endowment Program  
Wells Fargo Advisors  
Wintrust Investments  
YourCause

Foundations & Trusts

Adams Family Foundation  
Trust of James Audino  
Aurora Humanitarian Initiative Foundation  
Charles R. Wright Charitable Remainder Trust  
Cornelius Family Foundation Inc.  
The Derby Fund  
Edmund Rice Foundation of Australia  
Ella Cochrane Charitable Remainder Trust  
The Eucharist Foundation  
GHR Foundation  
Gleason Family Foundation  
Greater Houston Community Foundation  
Helen C. Devlin Trust  
Hope for Poor Children Foundation  
Infaiith Community Foundation  
KLM Foundation  
The Lazzara Family Foundation  
Love Meyer Family Foundation  
The McDonald Family Foundation  
Milton and Fannie Brown Family Foundation

Montana Community Foundation  
The Mushett Family Foundation  
National Christian Foundation Indiana  
The New York Community Trust  
Noster Foundation  
O'Shea Family Foundation  
The Reed Foundation  
Renaissance Charitable Foundation  
Sebastian Family Charitable Foundation  
Rita A. Starr Trust  
Pauline A. Stolteben Foundation  
Trammel Family Fund  
The Maria Therese Kimcuc Tran Fund  
William C. Dowling, Jr. Foundation  
The Catherine M. Walsh Foundation  
The Wendell Family Charitable Fund  
Wolohan Family Foundation

Organizations

African Mission Healthcare  
American Endowment Foundation  
The American Gift Fund  
Benevity  
Bon Secours Health System Inc.  
Catholic Education Centre  
Catholic Health Services of Long Island  
Combined Federal Campaign  
Damien-Dutton Society  
Food for the Poor Inc.  
International Medical Corps  
Kenda Onlus  
Medicines For Humanity  
Mercy Health  
Network for Good  
New Hope Baptist Church  
Poor Clare Nuns  
Shobha Sharma Thanksgiving Account  
Sisters of Charity of the Incarnate Word  
Sisters of the Sorrowful Mother Generalate  
St. Catherine University  
St. Joseph Parish  
Sudan Relief Fund

Photo credits: Gareth Bentley and Sebastian Narcisse

# Thank You for Making a Difference

“Each one must give as he has decided in his heart, not reluctantly or under compulsion, for God loves a cheerful giver.”  
—2 Corinthians 9:7

Firm in our faith, Catholic Medical Mission Board has been providing quality healthcare and dignity to the poor for more than a century. CMMB's core values of love, collaboration, excellence, and respect have stood the test of time, and we've grown into a global, faith-based, humanitarian organization, thanks to your steadfast generosity and compassion.

As we carry out our shared mission to serve vulnerable women, children, and families in need, we hope you will continue to partner with us.

## How Can You Continue to Help Advance Our Shared Mission?

**Give** . . . Your tax-deductible gift to CMMB will enable us to continue to deliver sustainable, impactful healthcare programs and services and essential medicines and supplies to the most vulnerable among us.

## Support Our Mission in Other Ways

**Join the Legacy Society** . . . By naming Catholic Medical Mission Board in your will or as a beneficiary of your life insurance policy or remaining IRA funds, your legacy of compassion and generosity will live on for millions of children and families around the world. We've partnered with FreeWill to give all of our supporters the opportunity to write a legally valid will at no personal cost. To get started, visit [FreeWill.com/CMMB](https://FreeWill.com/CMMB).

**Charitable Gift Annuities** . . . A charitable annuity is a simple agreement between you and CMMB. In exchange for your gift of cash, stock, or mutual funds, CMMB will pay you (and, if desired, another beneficiary) a fixed income for life. After your lifetime(s), proceeds remaining from your gift will help provide necessary support for vulnerable women and children in the areas we serve. For a personalized summary of annuity benefits based on your age and gift intentions, please contact Emily Chau, Planned Giving Officer, at 212-609-2588.

**IRA Distribution** . . . Supporters who are 70½ years or older can make a distribution from your IRA to CMMB for up to \$100,000 without reporting the withdrawal as taxable income. To calculate your RMD and make a tax-free gift to CMMB from your IRA, visit [FreeWill.com/QCD/CMMB](https://FreeWill.com/QCD/CMMB).

**Gifts of Securities** . . . You may avoid capital gains tax on securities held long-term and provide a tax deduction equal to the fair market value at the date of transfer. Complete your stock transfer in under 10 minutes by using our online stock transfer tool at [FreeWill.com/stocks/CMMB](https://FreeWill.com/stocks/CMMB).

**Donor Advised Funds** . . . Donor advised funds are an increasingly popular way to support CMMB with funds you have already set aside for charitable purposes. Please consider making a grant to CMMB through our DAF Direct portal by going to [cmmb.org/DAF](https://cmmb.org/DAF).

**Matching Gifts** . . . You can double the impact of your gift if you or your spouse work for a company with a matching gift program.

*Please contact our Partnerships Team directly at 212-609-2597 if you have any questions or need assistance in making your donation to CMMB.*

**Volunteer Opportunities** . . . Are you interested in volunteering for CMMB? To learn more, please contact us at [volunteer@cmmb.org](mailto:volunteer@cmmb.org).



## Stay in Touch CMMB

100 Wall Street, Floor 9, New York, New York 10005, 800-678-5659  
Visit **cmmb.org** and sign up for our newsletter or our Sunday Weekly Reflections





# CMMB Leadership

## Board of Directors

### Officers

<b>Chair: Rosemary Moynihan, S.C., Ph.D.</b> <i>General Superior, Sisters of Charity of Saint Elizabeth</i>	<b>Treasurer: Richard J. Statuto, M.B.A.</b> <i>Former President and CEO, Bon Secours</i>
<b>Vice Chair: Nicholas D’Agostino, III</b> <i>Chairman and CEO, D’Agostino Supermarkets</i>	<b>Secretary: N. Regina Rabinovich, M.D., M.P.H.</b> <i>ExxonMobil Scholar in Residence, Harvard TH Chan School of Public Health at Harvard University</i>

### Members

<b>Desmond G. FitzGerald</b> <i>President, Hope for Poor Children Foundation</i>	<b>Matt Malone, S.J., M.A.</b> <i>President and Editor in Chief, America Media</i>
<b>Edward J. Giniat, C.P.A.</b> <i>Partner, KPMG</i>	<b>Conrad Person</b> <i>Retired Director, Johnson &amp; Johnson, Charitable Giving Fund</i>
<b>Michael P. Hilbert, S.J., J.C.D.</b> <i>Associate Pastor, St. Ignatius Loyola Parish New York</i>	<b>Robert E. Robotti, M.B.A.</b> <i>Principal, Robotti &amp; Company, LLC</i>
<b>Patrick William Kelley, M.D., Dr.P.H.</b> <i>Distinguished Fellow in Nursing and Health Studies, Marion Peckham Egan School of Nursing and Health Studies, Fairfield University</i>	<b>John M. Starcher, Jr., J.D.</b> <i>President and CEO, Bon Secours Mercy Health</i>
<b>Scott Kobler, JD</b> <i>Partner, McCarter &amp; English LLP</i>	<b>Katherine A. Taylor, M.Sc., Ph.D.</b> <i>Director of Global Health Training, Eck Institute for Global Health, University of Notre Dame</i>
<b>Mary P. Leahy, MD</b> <i>CEO, Bon Secours Charity Health System</i>	<b>Bruce Wilkinson</b> <i>President and CEO</i>
<b>Janine Luke</b> <i>President, Silbanc Properties</i>	

### CMMB Executive Team

<b>Bruce Wilkinson, M.B.A.</b> <i>President and CEO</i>
<b>Michael O’Hara</b> <i>Chief Financial Officer</i>
<b>Dick Day</b> <i>Senior Vice President, Programs and Volunteers</i>
<b>Meseret Ansebo</b> <i>Vice President, Human Resources</i>
<b>Peggy O’Neill</b> <i>Vice President, Partnerships</i>
<b>John Mix</b> <i>Vice President, Marketing and Communications</i>
<b>Darnelle Bernier</b> <i>Vice President, Medical Donations Program</i>

### CMMB Country Directors

<b>Ariel Frisancho, M.D.</b> <i>Country Director, Peru</i>
<b>Dianne Jean-François, M.D., M.P.H.</b> <i>Country Director, Haiti</i>
<b>James Kisia, M.D.</b> <i>Country Director, Kenya</i>
<b>Jacqueline George</b> <i>Country Director, South Sudan</i>
<b>Batuke Walusiku-Mwewa, M.Sc.</b> <i>Country Director, Zambia</i>

# Financials

## Stewardship in Fiscal Year 2019, in US Dollars

<b>Donated Goods &amp; Services</b>	<b>\$ 403,973,377</b>
<i>Pharmaceuticals and Medical Supplies</i>	398,686,349
<i>Medical Volunteers Program</i>	5,287,028

<b>Contributions &amp; Other Revenue</b>	<b>\$ 35,173,853</b>
<i>Government</i>	9,611,728
<i>Individuals</i>	20,826,508
<i>Corporations, Foundations and Organizations</i>	2,370,668
<i>Trust and Estates</i>	2,346,438
<i>Other</i>	18,511

<b>TOTAL SUPPORT THROUGH SEPTEMBER 30, 2019</b>	<b>\$ 439,147,230</b>
---	-----------------------

<b>Program Services Expenses</b>	<b>\$ 581,790,801</b>
<i>Pharmaceuticals and Medical Supplies</i>	554,592,954
<i>Medical Volunteers Program</i>	5,829,240
<i>Support for Health Projects</i>	21,368,607

<b>Supporting Services Expenses</b>	<b>\$ 10,644,758</b>
<i>Fundraising</i>	5,967,104
<i>Administration</i>	4,677,654

<b>TOTAL EXPENSES THROUGH SEPTEMBER 30, 2019</b>	<b>\$ 592,435,559</b>
--	-----------------------

<b>Beginning net assets:</b>	<b>\$ 212,612,224</b>
<b>Ending net assets*:</b>	<b>\$ 59,417,712</b>

\*CMMB had a decrease in net assets of \$153 million for the year ended September 30, 2019. This decrease was due to timing of receipts of donated pharmaceuticals at the end of fiscal year 2018, which were not distributed until fiscal year 2019. As of September 30, 2018, these pharmaceuticals were included in inventory and donated revenue.



CMMB Rated  
Four Stars,  
Nine Years in a Row



Meets Better  
Business Bureau’s  
20 Standards for  
Charity Accountability







**cmmb**

Healthier Lives Worldwide

100 Wall Street, Floor 9, New York, New York 10005, 800-678-5659

[cmmb.org](http://cmmb.org)