



COVID-19 Emergency Response

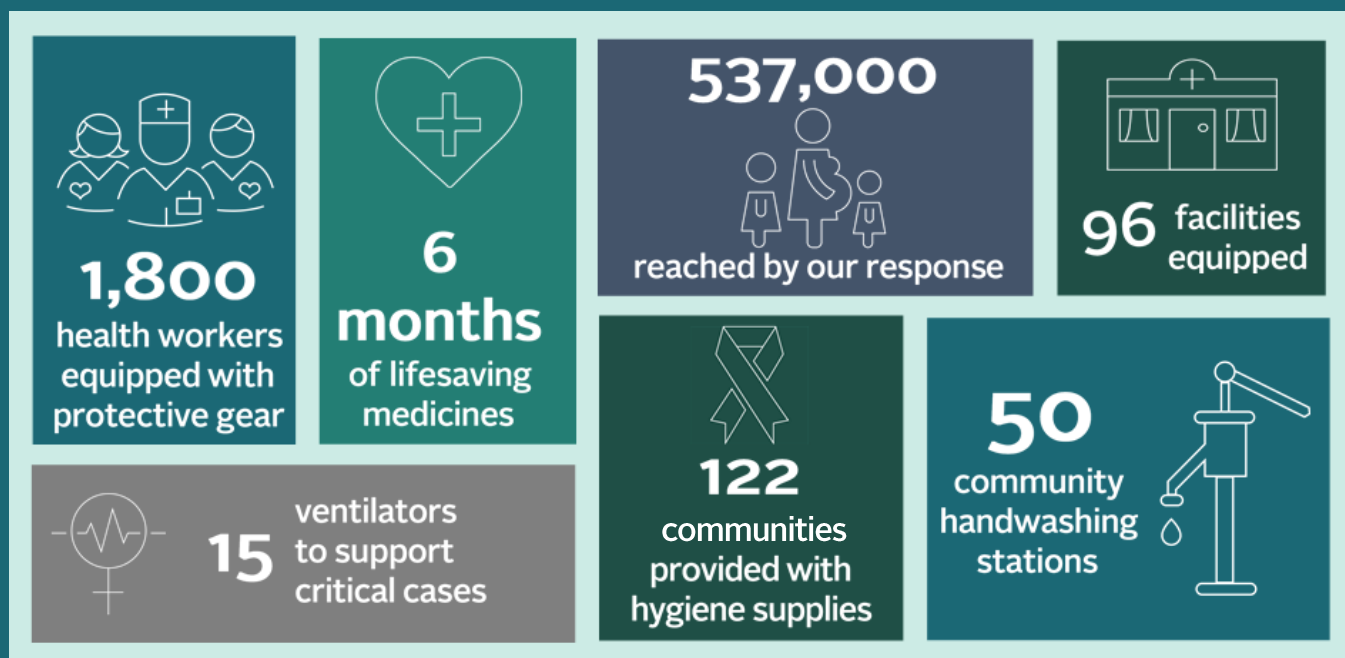


Equipping community health workers and health facilities to respond to the COVID-19 pandemic in five low-resource countries

Healthier Lives Worldwide

To help support this effort please contact
Lynn Jennings at Ljennings@cmmb.org

CMMB's COVID-19 Response



CMMB needs \$1.9 million to meet the basic needs of the communities where we work. Partnering with national ministries of health and the World Health Organization, we will equip health facilities with critical supplies, protect vulnerable communities, and improve access to safe water for handwashing.

Community Prevention

COVID-19 training for 1,142 CHWs

Protective gear for 1,142 CHWs

Soap for 122 communities

Medication for 1,300 mild cases

Prevention education

Emergency transport

Safe Water

Water storage tanks for 30
health facilities

Sanitation & hygiene stations
for 30 health facilities

Sanitation and hygiene stations
for 50 communities

20 community boreholes &
solar-powered pumps

Equip Health Facilities

Protective gear for 685
healthcare workers

5,000 sets of protective gear
for CMMB partners in-country

Medications for 96 facilities

6-month supply of medications

Sanitizer for 96 facilities

CMMB remains committed to bringing quality healthcare to the most vulnerable. We need you now more than ever with the threat of COVID-19. Our shared work in this critical time will have an impact on the lives of those for generations to come.



As COVID-19 threatens health worldwide, CMMB is mounting an urgent response to protect the vulnerable populations we serve. The remote areas where CMMB works in Haiti, Kenya, Peru, South Sudan, and Zambia are desperately poor, and every day is a constant struggle to maintain basic health and obtain clean water. CMMB is responding urgently to meet their immediate needs—and the needs of the health facilities that care for them.

Relentless in pursuit of our mission to provide quality healthcare, CMMB is committed to our vision of a world in which every human life is valued and health and human dignity are shared by all—this is reflected in the urgency of our COVID-19 response. Our 15 to 20-year commitment to our partner communities helps us respond to urgent needs and build resilient systems.

By training our community health workers on COVID-19 prevention and response and equipping health facilities to treat advanced cases, we are working to minimize the impact of COVID-19 on those already made vulnerable by malnutrition; by malaria, HIV, and other communicable diseases. We are working to give healthcare workers a fighting chance to protect their communities.

Our priorities in the face of this global pandemic underscore the importance of our longstanding efforts to provide quality health services, medications, and safe water for vulnerable communities. Our robust Medical Donations Program is ramping up efforts to support these efforts by providing critical supplies and medications. We are urgently seeking your partnership to accelerate these lifesaving efforts, as they are more needed than ever with the threat of COVID-19. Our shared work during this six-month emergency response phase help us maintain our long-term impact on improving the health for those in need.

We are committed to doing all we can on the ground. Each of our country offices has implemented protocols to ensure the safety of our staff and beneficiaries while staying fully operational throughout the pandemic, providing care and services our beneficiaries rely on.

Because of your partnership, we know we are improving the health of the vulnerable communities where we work. As we rapidly respond to this global need, we ask that you consider partnering with us to help provide critical care for the most vulnerable.

CMMB is urgently responding to the needs of our vulnerable communities.

COMMUNITY PREVENTION



Life

Ensuring healthy pregnancies and lifesaving services to mothers and children.

We are training our community health workers to build resilience and help stop the spread of COVID-19 in our remote communities.

CHWs provide critical front-line care to the remote communities we serve. To educate the public on COVID-19 prevention and treatment, CMMB's technical team is rapidly implementing new COVID-19 training for CHWs and HCWs. These trainings will ensure that all have a firm understanding of COVID-19 signs and symptoms as well as best practices and protocols for prevention, control, and mitigation, including effective behavior change communication on handwashing and social distancing. Our headquarters staff is actively staying abreast of COVID-19 developments, ensuring a nimble, rapid response and assured implementation of best practices, updating our field staff in real time. As always, our teams work closely with their respective national ministries of health, integrating their programmatic and reporting priorities.

Whether or not confirmed cases of COVID-19 are present, CHWs will be prepared to respond appropriately. They will be equipped with protective equipment and other essential supplies, purchased in-country and supported by our in-house Medical Donations Program. CMMB is working hard to ensure an uninterrupted supply of these essentials that the government may not be able to provide. Additionally, CHWs support the preparation of community health systems for the eventual introduction of COVID-19 vaccines.



CMMB's critical interventions to slow the spread of COVID-19, will support CHWs to provide critical information to their communities to raise awareness, build resilience, and provide direct services, particularly for high-risk groups—the elderly and those with comorbidities such as cardiovascular disease, diabetes, hypertension, and cancer. Our CHWs are critical for identifying mild to moderate cases and supporting home isolation, transmission prevention, and close daily monitoring of symptoms. Your support will help fund:

- **Equipping CHWs with critical supplies and equipment**, ensuring they can provide critical support without putting our communities and themselves at risk.
- **Community outreach** on COVID-19 signs, symptoms, and prevention.
- **Infection prevention and control** measures in communities, such as supplies for proper hygiene preventing transmission, meeting the basic needs of those isolating at home, and contact tracing.
- **Soap distribution** and other sanitation materials to these communities that simply do not have them.
- **Emergency transport** for the most vulnerable who do not have the resources to bring serious cases of COVID-19 to health facilities for treatment.
- **Isolation facilities** within communities to help mitigate transmission of COVID-19.

Our community health workers reach even the most remote communities without access to health information.

LIFESAVING WATER AND SANITATION



Water

Improving water,
sanitation and hygiene

Now more than ever, the communities we serve need access to safe water and sanitation—prevention starts here.



Safe water for communities

Our CHWs are on a mission to ensure every community understands the importance of **handwashing** in these critical times—they are conducting hygiene education, installing handwashing stations, and distributing **soap and hygiene supplies**.

Your support will help us improve access to safe water by funding community **boreholes** with solar-powered pumps and **rainwater catchment systems** to improve access to clean water, as well as **latrine** building and **hygiene training** to ensure proper sanitation.

With your partnership, we can accelerate our WASH programs to meet these critical needs in each of our populations. With clear and precise knowledge of each community's water source, sanitation facilities, and handwashing habits, CMMB can improve the health of the most vulnerable through simple interventions.

Water for Health Facilities

Worldwide, healthcare workers are doing all they can to treat those affected by COVID-19. Water access is critical to these efforts, but the remote, low-resource health facilities where we work have insufficient clean water and poor sanitation, forcing staff to rely on unsafe and insufficient water sources—threatening the most vulnerable.

CMMB is partnering with national and local leaders to rapidly install basic **handwashing stations** at key locations in healthcare facilities to help stave off COVID-19. This short-term solution will help while we continue our work to install **boreholes**, water storage **tanks**, and **pipled water** at all health facilities to protect staff and patients.



Providing access to water for handwashing will slow the spread of COVID-19 and save lives—and these investments will have a lifesaving impact long after the pandemic has ended.



Healthcare

Providing access to quality healthcare by strengthening local health facilities.

EQUIPPING HEALTH FACILITIES TO TREAT COVID-19

CMMB supports health facilities in low resource settings in desperate need of lifesaving supplies and equipment.

CMMB is rapidly responding to the immediate needs of healthcare workers as they prepare to provide critical care for COVID-19 patients in Kenya, Zambia, South Sudan, Peru, and Haiti. In these low-resource settings, critical, lifesaving supplies and equipment are lacking. Through our in-country partners and our robust Medical Donations Program, CMMB is quickly working to stock health facilities with personal protection items and lifesaving supplies and equipment essential to treat patients with serious cases of COVID-19. Your support will help fund the following critical supplies:

- Personal protective equipment, including face masks, gloves, gowns, face shields, and goggles
- Ventilators and other respiratory support supplies and equipment, including oxygen.
- Generators to support critical equipment
- Antiviral, analgesics, and antibiotic medications
- Tents to create isolation wards
- 70% alcohol for hand sanitizer
- Hospital beds and linens
- IV materials and fluids

Health facility clinical staff will receive training on providing treatment for COVID-19, as well as training on the equipment to ensure we are supporting the best quality care possible. Under the guidance of CMMB's clinical advisor, Claudia Llantén, MD, CMMB's training is based on the best information emerging from the World Health Organization and the U.S. Centers for Disease Control and Prevention. The training also incorporates resources for psychological support for healthcare staff.

In addition to clinical trainings, CMMB's strong cadre of CHWs will provide backup support for health facilities' workforce by supporting patient triage and care and performing safe collection of testing samples under nurse supervision. CHWs will help facilitate rapid transport of COVID-19 tests to laboratories and will organize and manage community isolation wards as necessary.

CMMB is committed to providing quality healthcare to last-mile communities and building their resilience, especially in these uncertain times. We seek your support to help us prevent devastation by COVID-19 in these desperately vulnerable populations.



*The support of our partners
in this critical time
can help save the lives
of the most vulnerable.*

COVID-19 Response Budget

Haiti	\$282,210
Kenya	\$507,150
Peru	\$198,935
South Sudan	\$531,314
Zambia	\$377,775
Total	\$1,897,384

Community Prevention	Total Cost (USD)	#
Train 1,142 CHWs	50,618	1,142
PPE for 1,142 CHWs	76,722	1,142
COVID-19 education materials for 122 communities	33,672	122
Soap for 122 communities	27,186	122
Medication (analgesics, antibiotics) for 1,375 mild cases	72,450	1,375
Emergency transport for 610 serious cases	42,090	610
CMMB staff training	20,700	-
Total	323,439	
Safe Water	Total Cost (USD)	#
Installation of water tanks in 30 health facilities	73,281	30
Sanitation and hygiene systems in 30 facilities	83,490	30
Sanitation and hygiene in 50 communities	34,500	50
Survey, drill install 20 community boreholes and solar pumps	448,500	20
Total	639,771	
Equip Health Facilities	Total Cost (USD)	#
Procure and transport PPE for 685 healthcare workers (6 months)	157,472	685 HCW
Procure and transport medications (6 months)	182,160	96 health facilities
Procure and transport hand sanitizer / disinfectant (6 months)	47,925	96 health facilities
100 sets of PPE for additional facilities	58,650	5,000 PPE sets
Air freight, clearing, delivery for 1 pallet PPE	26,910	5 countries
Procure and transport hygiene supplies (6 months)	62,928	685 HCW
15 ventilators	310,500	15 ventilators
Air freight, clearing, delivery for ventilators	80,730	5 countries (3 per country)
Direct support to partner (ZCCB)	6,900	-
Total	934,174	

COVID-19 Impact Numbers

	Haiti	Kenya	Peru	South Sudan	Zambia	Total
Population	53,000	170,000	15,000	262,000	37,000	537,000
Districts/counties	1	1	4	3	1	10
Communities	7	41	104	25	10	187
Hospitals	1	3	1	2	1	8
Health facilities (including hospitals)	5	50	12	20	9	96
CHWs	30	350	143	150	130	803

To help support this effort please contact
Lynn Jennings at Ljennings@cmmb.org