



Impact Report / Spring 2021

Update on Our COVID-19 Response



Against All Odds: CMMB Continues Serving Vulnerable Women, Children, and Communities Worldwide

The COVID-19 pandemic has affected the overall physical and mental health of millions of people. Nearly a year into our pandemic response here in Peru, we understand more fully the effect that extended lockdowns and curfews have had on the poor communities where we work.

The first wave of COVID-19 in 2020 quickly overburdened our fragile healthcare system and long periods of rigid lockdowns and travel restrictions halted traditional response efforts. To remain responsive to the specific needs of those we serve and flexible enough to adapt to changing realities, our traditional in-person service delivery needed to change. Instead of home visits, CMMB Peru and Community Health Workers established phone chains to keep in contact with and to support pregnant women and children with anemia who benefit from our programs. We remained committed to our core field interventions; especially access to

nutrition measures for at-risk women and children and the implementation of water and sanitation activities. CMMB-supported rehabilitation therapists conducted live video calls with children and parents participating in our disability rehabilitation program to ensure the continuity of care at home. In addition to these traditional health activities, the network of CMMB-supported community health workers also provided timely COVID-19 awareness messaging to limit the risk of exposure to our beneficiaries. Counseling calls and video chats reached 3,000 families.

Coupled with the risk to physical health from the virus, the pandemic has also taken a significant mental and emotional toll on health professionals and vulnerable families. We have witnessed the increasing vulnerability to mental health issues as lockdowns and quarantines have limited access to traditional economic and emotional



support systems. To help offset this pressure, we implemented one-to-one counseling for frontline health professionals and emergency survival packages for families suffering extreme hardship. But much more needs to be done in this area.

Our ability to adapt our programs and services under these adverse conditions has been a blessing and a lifeline to those we serve. Flexibility and adaption have been the key to our successful corona virus response. I am certain that additional adaptation will be necessary in the year ahead as we prepare our partners and communities for the vaccination programs to come.

On behalf of our program team here in Peru and around the world, I extend my heartfelt thanks to our partners and contributors whose support and prayers enable us to adapt in times of crisis and remain a responsive and compassionate provider of health care to those in need.

Love, respect, excellence, collaboration, and solidarity will allow us succeed.

A stylized, handwritten signature in black ink.

Ariel Frisancho
CMMB Country Director, Peru



COVID-19 Response Goals

In April 2020, CMMB announced a \$1.9 million campaign to launch a number of COVID-19 health initiatives aimed at limiting the spread of the virus in the communities we serve, protecting frontline health workers and building the capacity of health facilities. Key priorities included provision of Personal Protection Equipment (PPE) and training for health workers, access to clean water and sanitation at health facilities and communities, COVID-19 awareness messaging and equipping health facilities to identify and manage COVID-19 cases.



Our Goals: Key Campaign Success Indicators

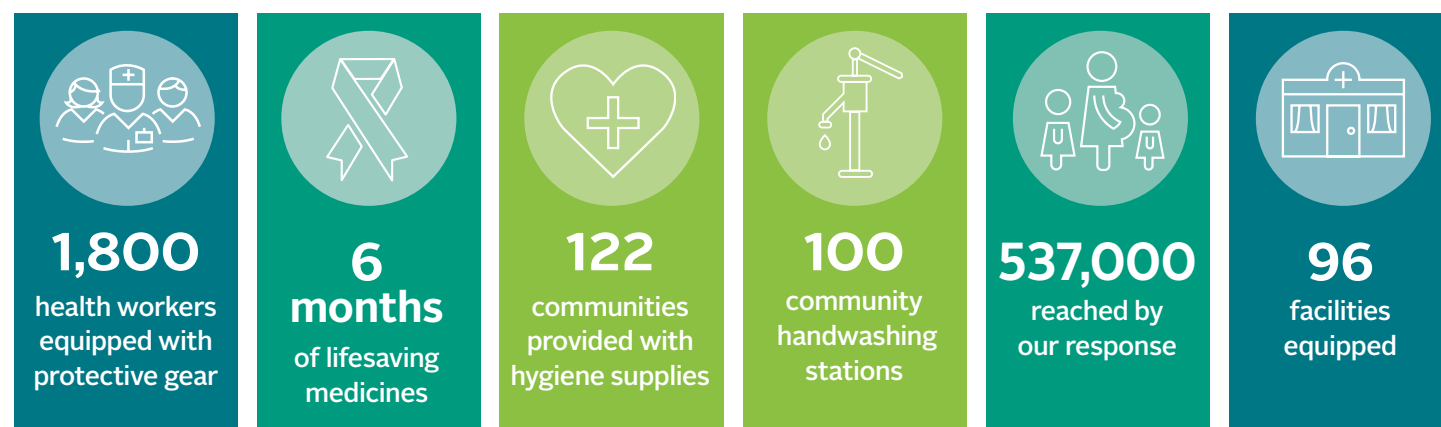


Chart of Planned Interventions/Outcomes

Community Prevention	Safe Water	Equip Health Facilities
<ul style="list-style-type: none"> COVID-19 training for 1,142 CHWs Protective gear for 1,142 CHWs Soap for 122 communities Medication for 1,300 mild cases Prevention Education Emergency transport Support trainings for health care providers 	<ul style="list-style-type: none"> Water Storage tanks for 30 health facilities Sanitation & hygiene stations for 30 health facilities Sanitation and hygiene stations for 50 communities 20 community boreholes & solar-powered pumps 	<ul style="list-style-type: none"> Protective gear for 685 healthcare workers 5,000 sets of protective gear for CMMB partners in-country Medications for 96 facilities Provision of triage stations Equip with infrared thermometers, pulse oximeters and oxygen concentrators Build, equip and support isolation areas

Assessing the Greatest Need

To effectively allocate resources to meet the greatest need, CMMB's country program teams conducted rapid health assessments and six month follow-up assessments of our beneficiary communities to identify gaps in health facility preparedness and community awareness related to COVID-19

prevention. Working with the local health departments, implementing partners and communities, our country teams implemented targeted activities to address the most urgent needs, with a priority on strengthening health facilities.

213 Health Facilities Received Baseline and Follow-Up Assessments



Reaching the Isolated

Lockdowns and mandatory quarantines created a real challenge for reaching individuals who benefit from our programs. Information and educational materials, normally delivered in person were adapted for digital, print, video and recording and

delivered via email, text, and radio to ensure continuity of services and provide critical COVID-19 messaging to as many people as possible. In Kenya, CMMB's radio broadcasts reached over 400,000 people.



COVID-19 Accomplishments By the Numbers

Thanks to the generosity of CMMB's supporters and partners we have made remarkable progress in our efforts to increase

the safety of our staff, healthcare workers and the five countries in which we operate.

Results for Key Campaign Success Indicators (6 months ending Sept 2020)



1,140

community health workers received COVID-19 training



1,321

community health workers equipped with PPE



407,542

individuals reached with COVID-19 awareness messaging.



248

Health facilities equipped for COVID-19 cases include PPE for health workers



118

community handwashing stations completed



1,541

boxes of soap distributed in communities

Activity Successes



19

Water tanks and boreholes installed at health facilities



166

Health facility handwashing stations installed



65

oxygen concentrators delivered to health facilities



930

pulse oximeters provided to health care workers

What is Next?

Building on the lessons we have learned, CMMB is committed to maintaining our COVID-19 prevention activities and advocating and preparing for the equitable distribution of vaccines when they become available.

Where will we continue to focus?

- Maintain a system of contact tracing
- Expand COVID-19 information and communication
- Continue support for screening and triaging
- Maintain levels of PPE and hygiene supplies
- Increase access to safe water
- Disseminate new messages of hope for COVID-19 using faith leaders' and faith organizations' platforms to combat stigma around COVID-19
- Strengthen mental health and ensure safety of our staff
- Continue engagement in national and regional response planning
- Prepare health facilities and community health worker networks for vaccine distribution

Our Role in Vaccine Distribution

- Community mobilization and awareness building through Information, Education and Communication (IEC) materials
- Support the last mile distribution using CMMB's network of health workers
- Support the prioritization scheme established by Ministries of Health
- Support the implementation of the immunization campaigns



CMMB Peru Provides Survival Care packages during COVID-19



With COVID-19 cases increasing, the CMMB Peru team distributed relief to help sustain families who lost their jobs and household income during rigid and lengthy lockdowns.

Thanks to the generosity of volunteers, local supporters, Bon Secours/Mercy Health System and Johnson and Johnson-Peru, families received survival kits that included milk, beans, canned tuna, oil and vegetables, among other staples with high nutrition value.

Visits, calls or messages of spiritual and emotional support were made to 2,952 families, 132 community health workers and 119 health professionals.

Over 200 families received packages and an additional 75 families with children with disabilities received packages.

South Sudan COVID-19 Spotlight

In May, CMMB assessed 11 CMMB-supported health facilities, highlighting the achievement that has been made in handwashing, as well as the remaining gaps in supply of disinfectant, hand sanitizer, and soap.

New triage stations for COVID-19 patients were opened at three health facilities for which, CMMB received national TV coverage.

Permanent handwashing blocks, replacing the temporary ones, have been installed adjoining the triage centers. They are unique in the country.

In Yambio, CMMB provided technical support in renovating a case management site funded by the United Nations Mission and has provided equipment for several isolation sites.



CMMB has provided training and sensitizations for healthcare workers after completing facility assessments.

In June, CMMB conducted a 3-day training for 30 participants. These were mainly clinicians, nurses, midwives on case management for COVID-19 patients, and psychological counseling.

Addressing the Emotional and Mental Health of Caregivers



A growing unaddressed toll of the pandemic is the emotional and mental well-being of health workers and caregivers.

In addition to scaling up efforts to equip healthcare workers and facilities with PPE and to provide COVID-19 education to healthcare workers and local communities, CMMB has developed resources and programming to address what has emerged as an unanticipated dimension of the pandemic:

the spiritual and emotional toll on healthcare workers and communities.

The stress and anxiety felt by frontline health care workers continues to grow. CMMB has taken steps to address the extraordinary demands placed on healthcare workers. Working with volunteer M. Therese Lysaught, PhD,

a theologian and professor of bioethics at Loyola University Chicago, we have developed the **CMMB Building Resilience Series**. The series of seminars, led by a panel of experts, supports frontline health workers on how best to address the spiritual, emotional and ethical challenges presented by the pandemic.

Ndunge and Elizabeth

Ndunge and Elizabeth are community health workers in rural Kenya. They are trained to treat common illnesses in children under five, support maternal health, refer complicated cases to hospitals, and so much more.

"I take pride in what I am doing for and in my community. Every community member knows me. If they have any health concerns, I am their first point of contact before I refer them to the hospital. I am glad I can serve my community this way,"

—Ms Kamene

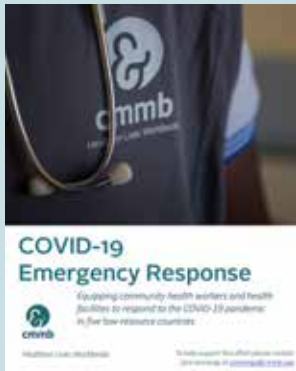
Since the start of the COVID-19 pandemic, community health workers like Ndunge and Elizabeth, continued their work courageously in the face of this deadly disease. They are educating families on how to protect themselves from the virus and what to do if they believe they have COVID-19. They are out in their communities every day, making sacrifices to ensure their neighbors have the tools to get through this pandemic.



CMMB Kenya Community Health Worker Ndunge with child, showing her how to wash her hands

We Have a Way To Go

In March, as the COVID-19 pandemic quickly spread across the globe and into the communities where CMMB operates, CMMB committed to mounting a \$1.9 million effort to provide relief to our health partners and staff in five countries. CMMB immediately made \$450,000 available for the purchase of personal protection equipment and essential hygiene supplies. To date, we have secured \$1,100,000 in commitments towards this goal.



COVID-19 Emergency Response



CMMB Rated
Four Stars,
Nine Years in a Row



Meets Better
Business Bureau's
20 Standards for
Charity Accountability



For more information please contact our Partnerships Team at 212-609-2597 or info@cmmb.org.



100 Wall Street, Floor 9
New York, NY 10005

Connect with us!

CMMBWorldwide

cmmbtweets

CMMB — Healthier Lives Worldwide

cmmbworldwide

cmmb.org

800.678.5659